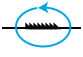



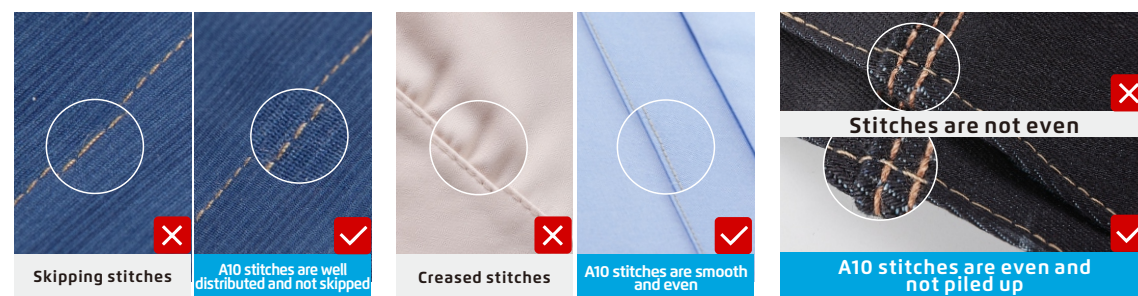


A10⁺ Intelligent 3 in 1 lockstitch machine

Feeding locus	Main characteristics	Sewing range
Conventional material 	Suitable for sewing more than 80% of conventional material	Workwear, woolen coat, wind-jacket, casual pants, ..
Glossy material 	Keep fabric from slipping when sewing	Women's clothing, pajamas, sun protection clothes, wind-jacket
Feeble material 	Less crease material and reduce skipping stitches	Sportswears, underwear, light down jacket, dresses, ..
Thick material 	Suitable for sewing through thick area, standard stitches and avoid breaking needle	Down jacket, jacket, sweaters, denim and other thick clothes



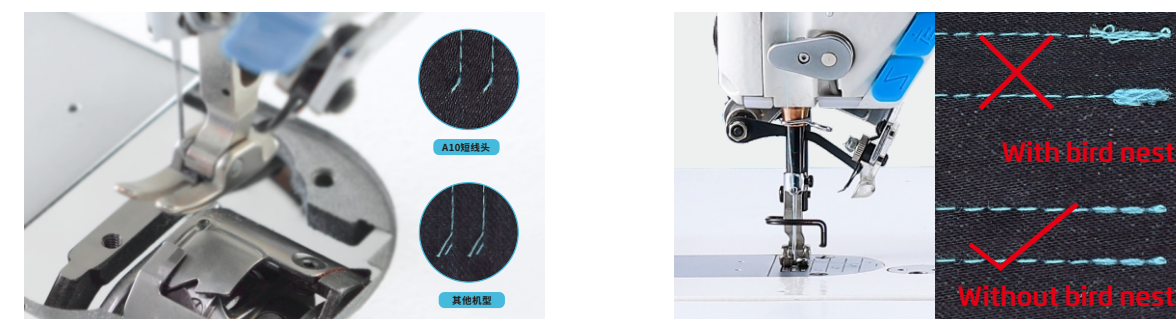
1 Sew easily through thick area, not breaking needle

When the fabric position is too thick, the machine automatically recognizes the position. Through the advanced control system, coordinates the core components, increases the torque of the motor, changes the feeding locus, improves the machine's ability to feed thick's fabric, reduces broken needles, broken threads, needle accumulation and other problems. Sewing through thick area is smooth and the needle distance is even. Patent number: CN201811076231.5



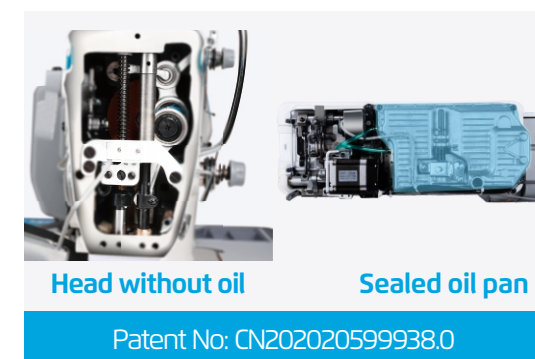
2 Double knife to cut thread, avoid bird nest (optional)

When avoiding bird nest connected with stepping motor, sewing stitches will appear without clew or thread tails. Double knife could control the cutting thread tails within 3mm, no need second trimming. Unique thread tail blockage, no matter how short the thread tail, it would not be scattered.



3 Oil-free head, sealed oil pan

The oil pan is sealed to reduce dust entering the body machine and contaminating fabric; the oil-free design of the head ensures that the sewing machine can be fully lubricated while running at high speed. Avoid oil contamination of the seam material.



4 Large sewing space 300mm

Larger sewing space 300mmX128mm, it can easily handle fluffy jacket and large cotton clothes.

