

# 金輪牌工業用縫紉機

GOLDEN WHEEL INDUSTRIAL SEWING MACHINE

- ① 2017. 04. 26 P02. P32. P40
- ② 2018. 09. 21全單式皮帶蓋裝配圖
- ③ 2019. 06. 11 P08. P12. P22. P24.  
P30. P34. P42.

## 零件分解圖

PARTS BOOK

MODEL: CS-8810H

CS-8820H

啓 翔 股 份 有 限 公 司  
CHEE SIANG INDUSTRIAL CO., LTD.

# MODEL : CS-8810H CS-8820H

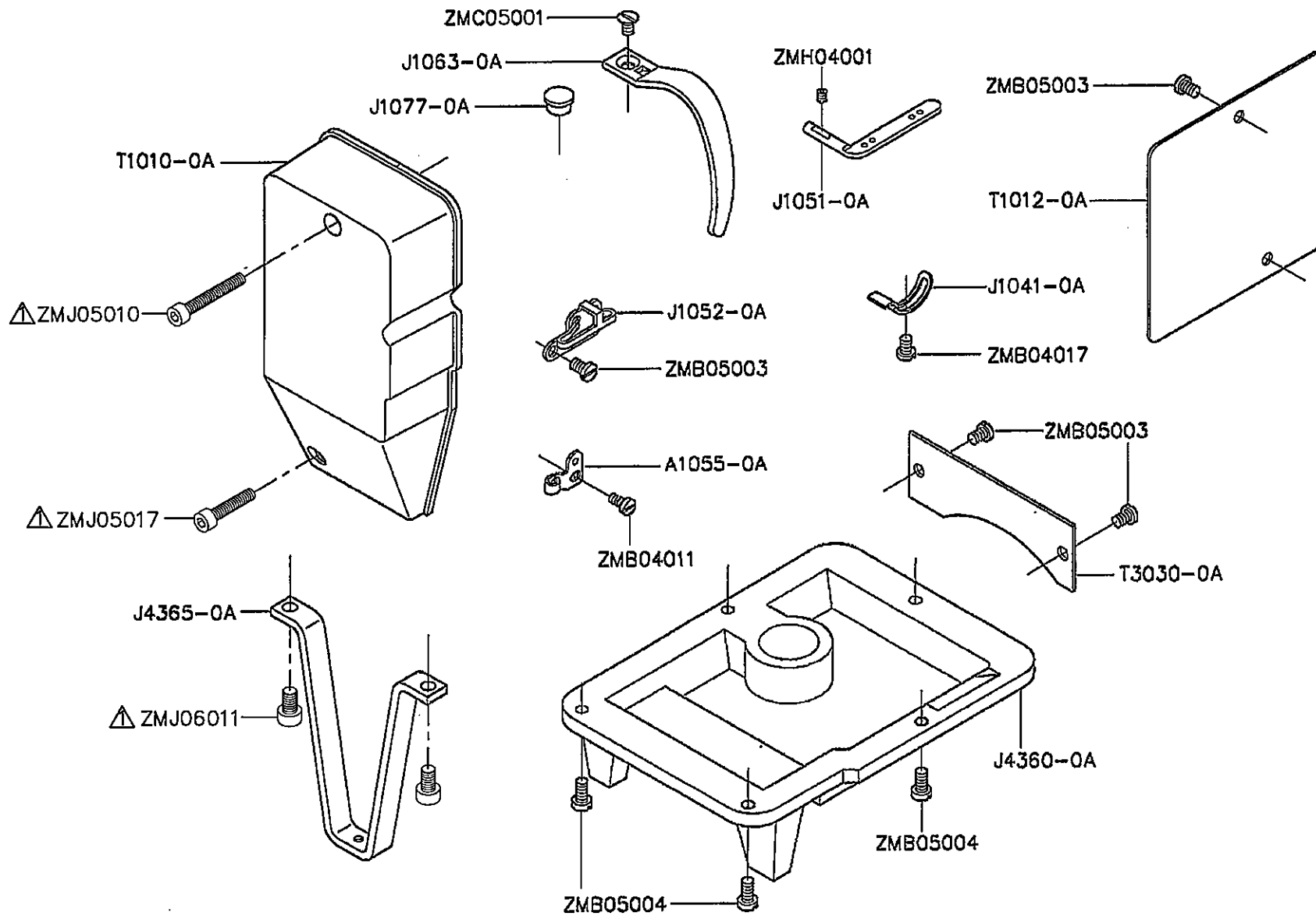
## 索引

## INDEX

## PAGE

A. CS-8810 .CS-8820	本體機構	-----	ARM BED AND ITS ACCESSORIES		2 - 3
B. CS-8810H.CS-8820H	縫線壓力調整機構	---	UPPER THREAD TENSION REGULATOR MECHANISM	----	4 - 5
C. CS-8810 .CS-8820	單向培林軸機構	----	SINGLE-DIRECTION BEARING SHAFT MECHANISM	----	6 - 7
D. CS-8810 .CS-8820	輪錢組機構	-----	ROLLER PRESSER FOOT MECHANISM	-----	8 - 9
E. CS-8810 .CS-8820	天枰機構	-----	TAKE-UP LEVER MECHANISM	-----	10 -11
F. CS-8810H.CS-8820H	上軸皮帶輪機構	----	UPPER SHAFT AND BALANCE WHEEL MECHANISM	----	12 -13
G. CS-8810 .CS-8820H	上邊心機構	-----	UPPER SIDE SHAFT MECHANISM	-----	14 -15
H. CS-8810H.CS-8820H	針棒機構	-----	NEEDLE BAR MECHANISM	-----	16 -17
I. CS-8810H.CS-8820H	針棒搖擺機構	-----	NEEDLE BAR ROCKING MECHANISM	-----	18 -19
J. CS-8810H.CS-8820H	押棒機構	-----	PRESSER FOOT BAR MECHANISM	-----	20 -21
K. CS-8810 .CS-8820	皮帶傳動機構	-----	TIMING BELT DRIVING MECHANISM	-----	22 -23
L. CS-8810 .CS-8820	縫目調整器機構	----	STITCH REGULATOR MECHANISM	----	24 -25
M. CS-8810H.CS-8820H	輸送軸機構	-----	FEED SHAFT MECHANISM	-----	26 -27
N. CS-8810 .CS-8820	離合器組機構	-----	CLUTCH SET MECHANISM	-----	28 -29
O. CS-8810H	中座機構	-----	CENTRAL BRACKET MECHANISM	-----	30 -33
P. CS-8820H	左邊邊座	-----	LEFT SIDE BRACKET AND CENTRAL BRACKET MECHANISM	-----	34 -35
Q. CS-8820H	左邊邊座	-----	LEFT SIDE BRACKET MECHANISM	-----	36 -39
R. CS-8810 .CS-8820	送齒輪單向前進機構	-	FEED WHEEL SINGLE-DIRECTION DRIVING MECHANISM	----	40 -41
S. CS-8810H.CS-8820H	右邊邊座	-----	RIGHT SIDE BRACKET MECHANISM	-----	42 -45
T. CS-8810H.CS-8820H	附件	-----	ACCESSORIES	-----	46 -49
U. CS-8810H.CS-8820H	零件號碼與頁數對照表	-----	NUMERICAL PARTS-LIST	-----	50 -53

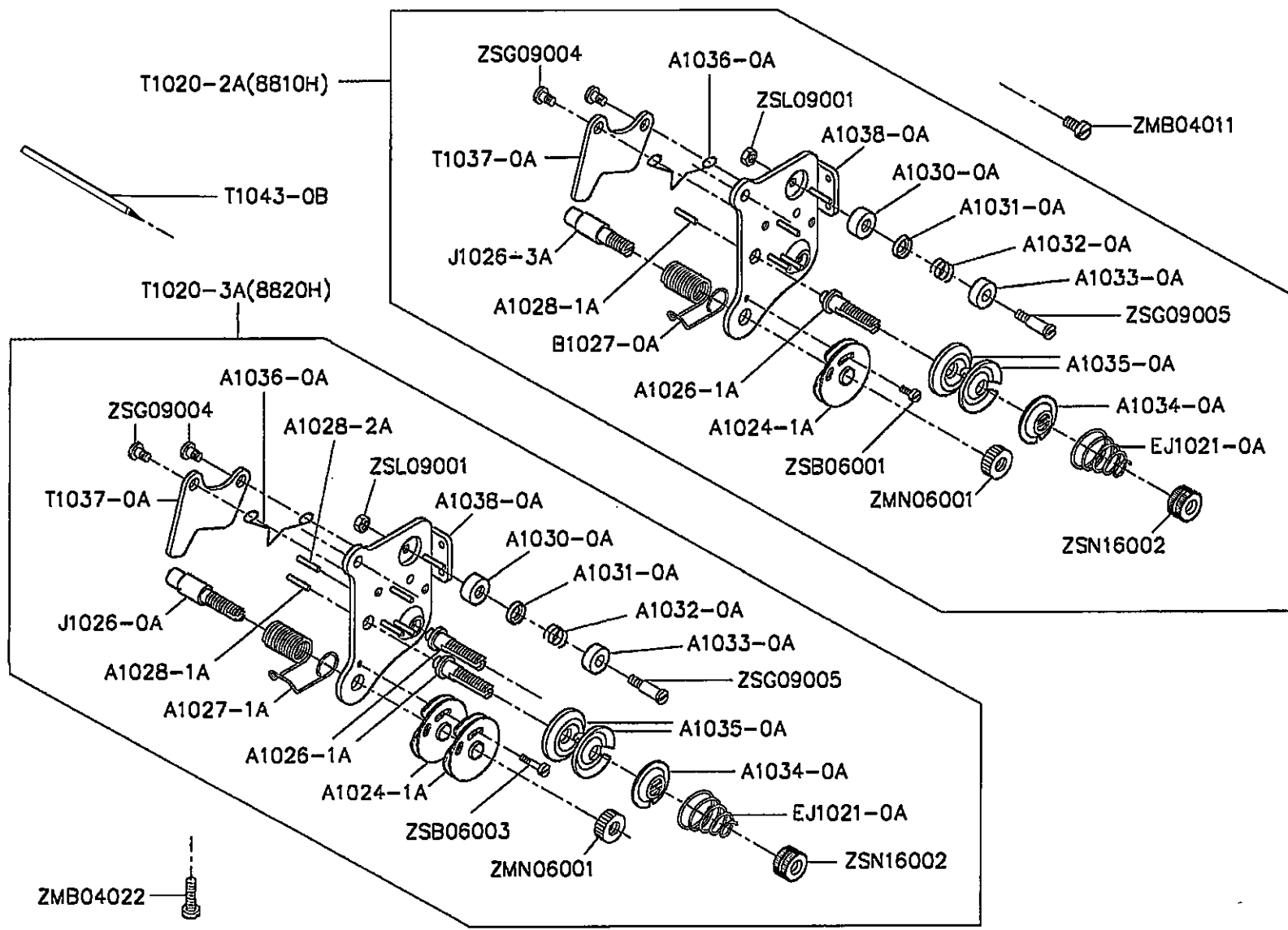
A.CS-8810・CS-8820 本體機構 ARM BED AND ITS ACCESSORIES



A. CS-8810.8820 本體機構 ARM BED AND IT'S ACCESSORIES

零件號碼 Part No	零件名稱	Name of Part	件數 Q, TY		備註 Remarks
			8810	8820	
A1055-0A	線掛 -----	Thread Guide Wire -----	1	1	
J1041-0A	線軸彈簧調整器 -----	Stopper -----	1	1	
J1051-0A	四孔線掛 -----	4 Hole Thread Retainer -----	1	1	
J1052-0A	線掛 -----	Thread Guide Wire -----	1	1	
J1063-0A	天秤蓋 -----	Thread Take-up Cover -----	1	1	
J1077-0A	油蓋 -----	Needle Bar Upper Bushing Cap -----	1	1	
J4360-0A	底座盤 -----	Bottom Cover -----	1	1	
J4365-0A	固定座 -----	Bracket -----	1	1	
T1010-0A	面板 -----	Face Plate -----	1	1	
T1012-0A	大防砂板 -----	Arm Side Cover -----	1	1	
T3030-0A	防塵蓋 -----	Arm Side Cover -----	1	1	
ZMB04011	螺絲 -----	Screw (M4×0.7×8) -----	1	1	
ZMB04017	螺絲 -----	Screw (M4×0.7×7) -----	1	1	
ZMB05003	螺絲 -----	Screw (M5×0.8×7) -----	5	5	
ZMB05004	螺絲 -----	Screw (M5×0.8×10) -----	5	5	
ZMC05001	螺絲 -----	Screw (M5×0.8×8) -----	1	1	
ZMH04001	螺絲 -----	Screw (M4×0.7×4) -----	1	1	
ZMJ05010	螺絲 -----	Screw (M5×0.8×35) -----	1	1	
ZMJ05017	螺絲 -----	Screw (M5×0.8×25) -----	1	1	
ZMJ06011	螺絲 -----	Screw (M6×1.0×10) -----	2	2	

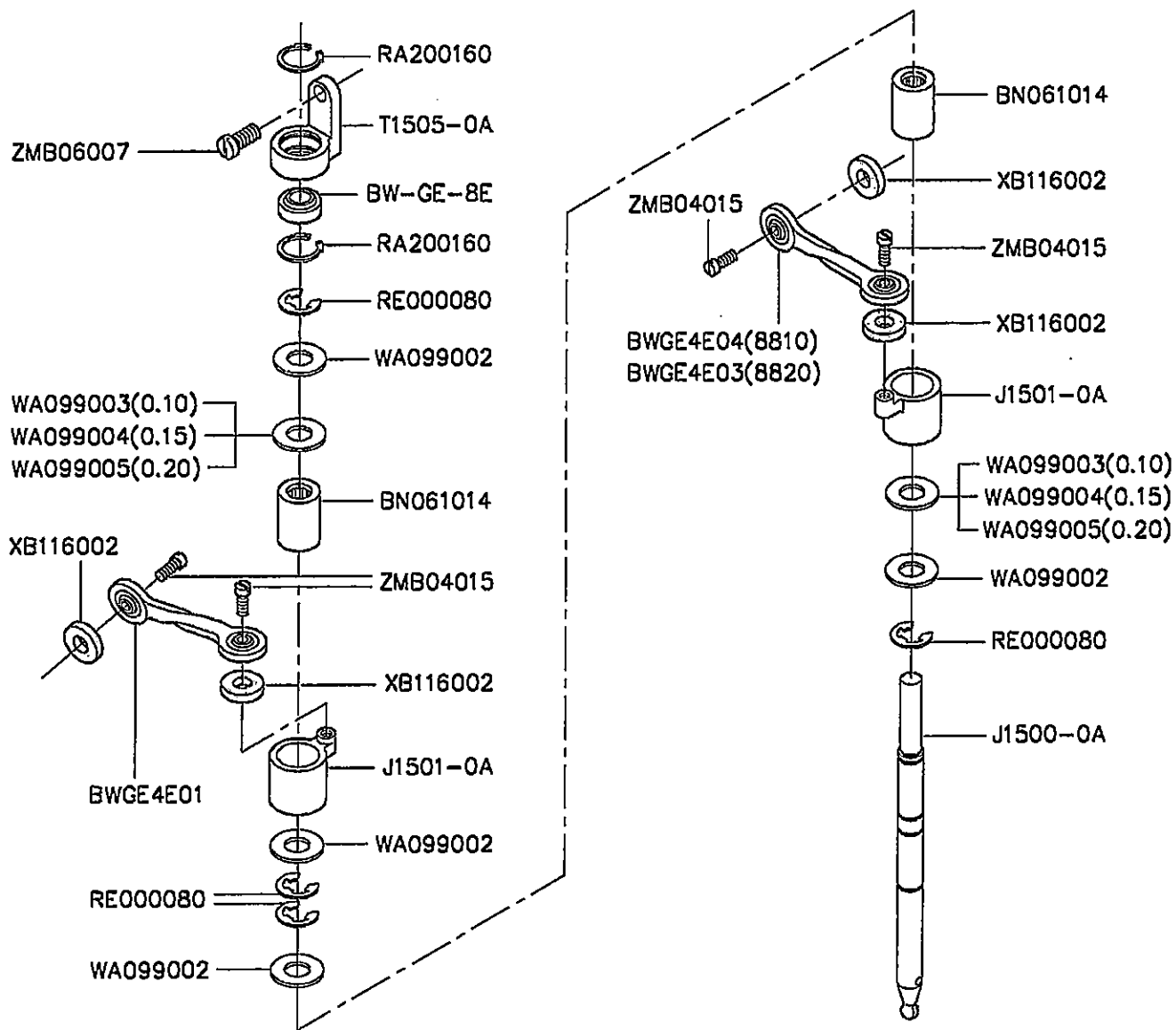
B. CS-8810H·CS-8820H 縫線壓力調整機構 UPPER THREAD TENSION REGULATOR MECHANISM



B. CS-8810H. CS-8820H 縫線壓力調整機構 UPPER THREAD TENSION REGULATOR MECHANISM

零件號碼 Part No	零件名稱	Name of Part	件數 Q, TY		備註 Remarks
			8810	8820	
A1024-1A	過線盤組	Tension Regulator Bracket	1	2	
A1026-1A	調整螺絲桿	Thread Tension Stud	1	2	
A1027-1A	吊線彈簧	Thread Take-up Spring	0	1	
A1028-1A	鬆線銷	Tension Releasing Pin	1	1	
A1028-2A	鬆線銷	Tension Releasing Pin	0	1	
A1030-0A	過線孔台	Thread Guide Bracket	1	2	
A1031-0A	過線孔圓盤	Thread Guide Disc	1	2	
A1032-0A	導線彈簧	Thread Guide Spring	1	2	
A1033-0A	過線孔內蓋	Thread Guide Cap	1	2	
A1034-0A	線調整壓盤	Tension Regulator Presser Disc	1	2	
A1035-0A	壓線盤	Tension Disc	2	4	
A1036-0A	壓板彈簧	Tension Releasing Spring	1	1	
A1038-0A	上線壓力板	Upper Thread Tension Plate	1	1	
B1027-0A	吊線彈簧	Thread Take-up Spring	1	0	
EJ1021-0A	調整彈簧	Thread Tension Spring	1	2	
J1026-0A	調整螺絲棒	Thread Tension Stud	0	1	
J1026-3A	調整螺絲棒	Thread Tension Stud	1	0	
T1020-2A	縫線壓力調整組	Thread Tension Regulator Assy	1	0	
T1020-3A	縫線壓力調整組	Thread Tension Regulator Assy	0	1	
T1037-0A	彈簧板	Tension Release Plate	1	1	
T1043-0B	鬆線銷	Tension Releasing Pin	1	1	
ZMB04011	螺絲	Screw (M4x0.7x8)	1	1	
ZMB04022	螺絲	Screw (M4x0.7x15)	1	1	
ZMN06001	螺帽	Nut (M6x0.75x5)	1	1	
ZSB06001	螺絲	Screw (3/32-56x6.3)	1	0	
ZSB06003	螺絲	Screw (3/32-56x12)	0	1	
ZSG09004	螺絲	Screw (9/64-40)	2	2	
ZSG09005	螺絲	Screw (9/64-40)	1	2	
ZSL09001	螺帽	Nut (9/64-40x3)	2	2	
ZSN16002	螺帽	Nut (11/64-40x12)	1	2	

C. CS-8810、CS-8820 單向培林軸機構 SINGLE-DIRECTION BEARING SHAFT MECHANISM

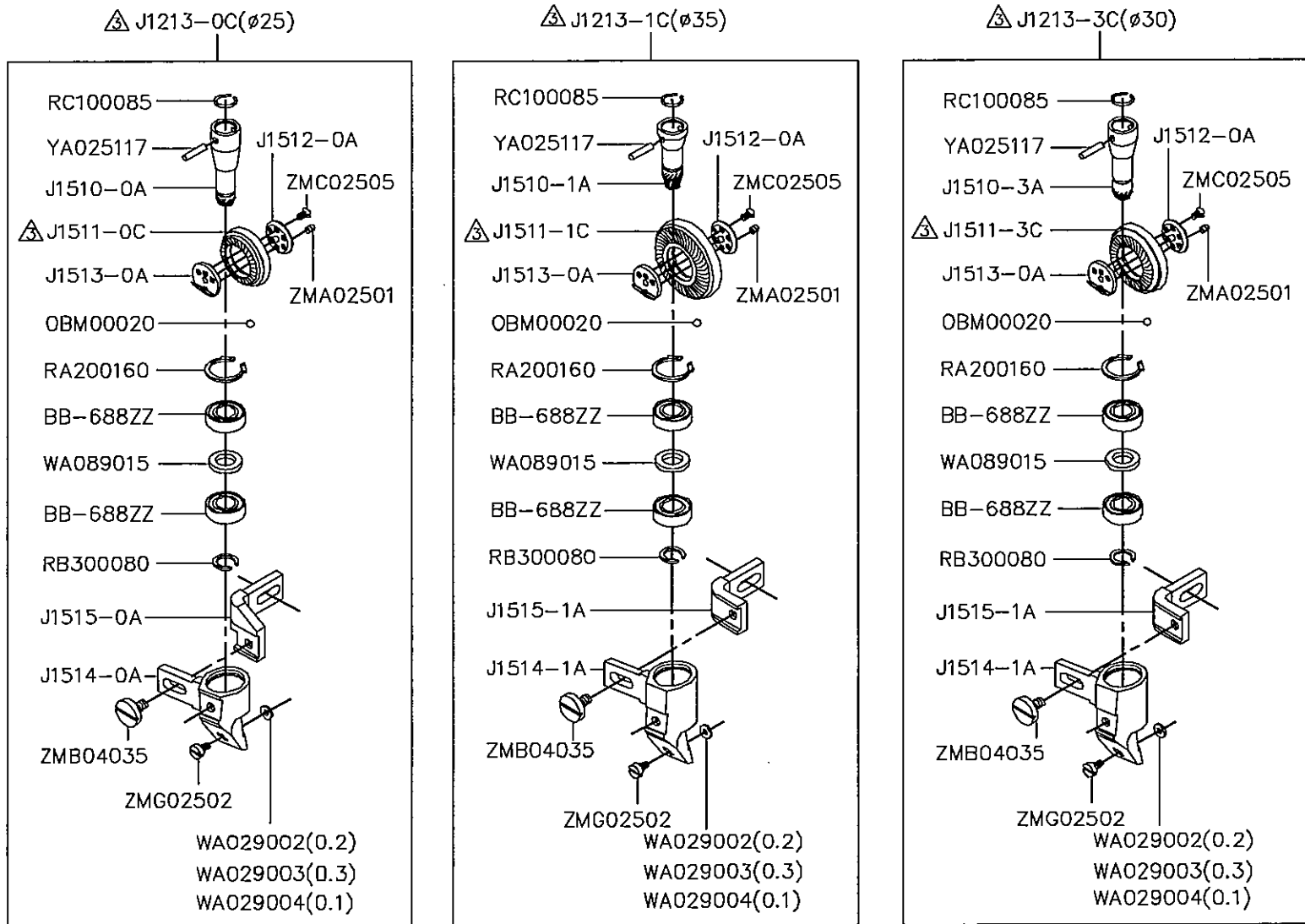


C. CS-8810. CS-8820 單向培林軸機構 SINGLE-DIRECTION BEADING SHAFT MECHANISM

零件號碼 Part No	零件名稱 Name of Part	件數 8810	Q, TY 8820	備註 Remarks
BN061014	針狀軸承 ----- Needle Bearing -----	2	2	
BW-GE-8E	球狀萬向型軸承 ----- Bearing -----	1	1	
BWGE4E01	球狀萬向型軸承拉桿 - Link -----	1	1	
BWGE4E03	球狀萬向型軸承拉桿 - Link -----	0	1	
BWGE4E04	球狀萬向型軸承拉桿 - Link -----	1	0	
J1500-0A	單向培林軸 ----- Shaft -----	1	1	
J1501-0A	單向培林座 ----- Free-wheeling -----	2	2	
RA200160	C形扣環 ----- Retaining Ring -----	2	2	
RE000080	E形扣環 ----- E-Ring -----	4	4	
T1505-0A	萬向培林座 ----- Bearing Bracket -----	1	1	
WA099002	平墊圈 ----- Washer -----	4	4	
WA099003	平墊圈 ----- Washer -----	2	2	
WA099004	平墊圈 ----- Washer -----	2	2	
WA099005	平墊圈 ----- Washer -----	2	2	
XB116002	油棉 ----- Oil Welt -----	4	4	
ZMB04015	螺絲 ----- Screw (M4×0.7×10) -----	4	4	
ZMB06007	螺絲 ----- Screw (M6×0.75×5) -----	1	1	



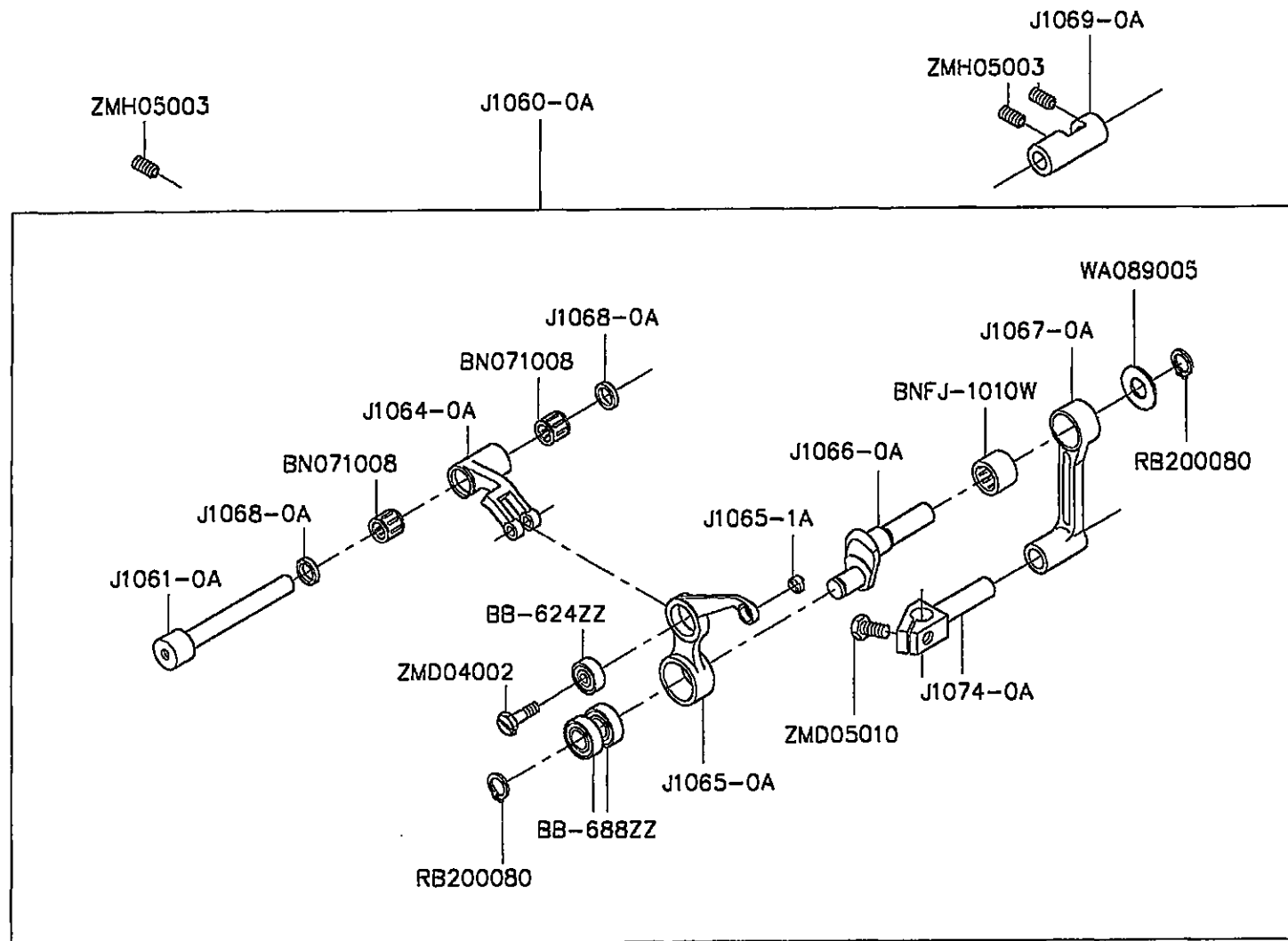
D. CS-8810H·CS-8820H 輪錢組機構 ROLLER PRESSER FOOT MECHANISM



D. CS-8810H. CS-8820H 輪錢組機構 ROLLER PRESSER FOOT MECHANISM

零件號碼	零件名稱	Name of Part	件數	Q, TY	備註
Part No			8810	8820	Remarks
BB-688ZZ	滾珠軸承	Ball Bearing	2	2	
J1213-0C	輪錢組(ø25)	Roller Presser Assy. (ø25)	1	1	
J1213-1C	輪錢組(ø35)	Roller Presser Assy. (ø35)	1	1	
J1213-3C	輪錢組(ø30)	Roller Presser Assy. (ø30)	1	1	
J1510-0A	齒輪	Gear	1	1	
J1510-1A	齒輪	Gear	1	1	
J1510-3A	齒輪	Gear	1	1	
J1511-0C	車輪	Presser	1	1	
J1511-1C	車輪	Presser	1	1	
J1511-3C	車輪	Presser	1	1	
J1512-0A	輪錢軸座(前)	Presser Shaft Seat (Front)	1	1	
J1513-0A	輪錢軸座(後)	Presser Shaft Seat (Back)	1	1	
J1514-0A	輪錢座	Roller Presser Bracket	1	1	
J1514-1A	輪錢座	Roller Presser Bracket	1	1	
J1515-0A	輪錢連接座	Guide Seat	1	1	
J1515-1A	輪錢連接座	Guide Seat	1	1	
OBM00020	鋼珠	Ball	24	24	
RA200160	C形扣環	Retaining Ring	1	1	
RB300080	C形扣環	Retaining Ring	1	1	
RC100085	止輪環	Spring Washer	1	1	
WA029002	平墊圈	Washer	1	1	
WA029003	平墊圈	Washer	1	1	
WA029004	平墊圈	Washer	1	1	
WA089015	平墊圈	Washer	1	1	
YA025117	平行銷	Pin	1	1	
ZMA02501	螺絲	Screw (M2.5x0.45x2)	3	3	
ZMB04035	螺絲	Screw (M4x0.7x8)	1	1	
ZMC02505	螺絲	Screw (M2.5x0.45x4.8)	3	3	
ZMG02502	螺絲	Screw (M2.5x0.45x5.7)	1	1	

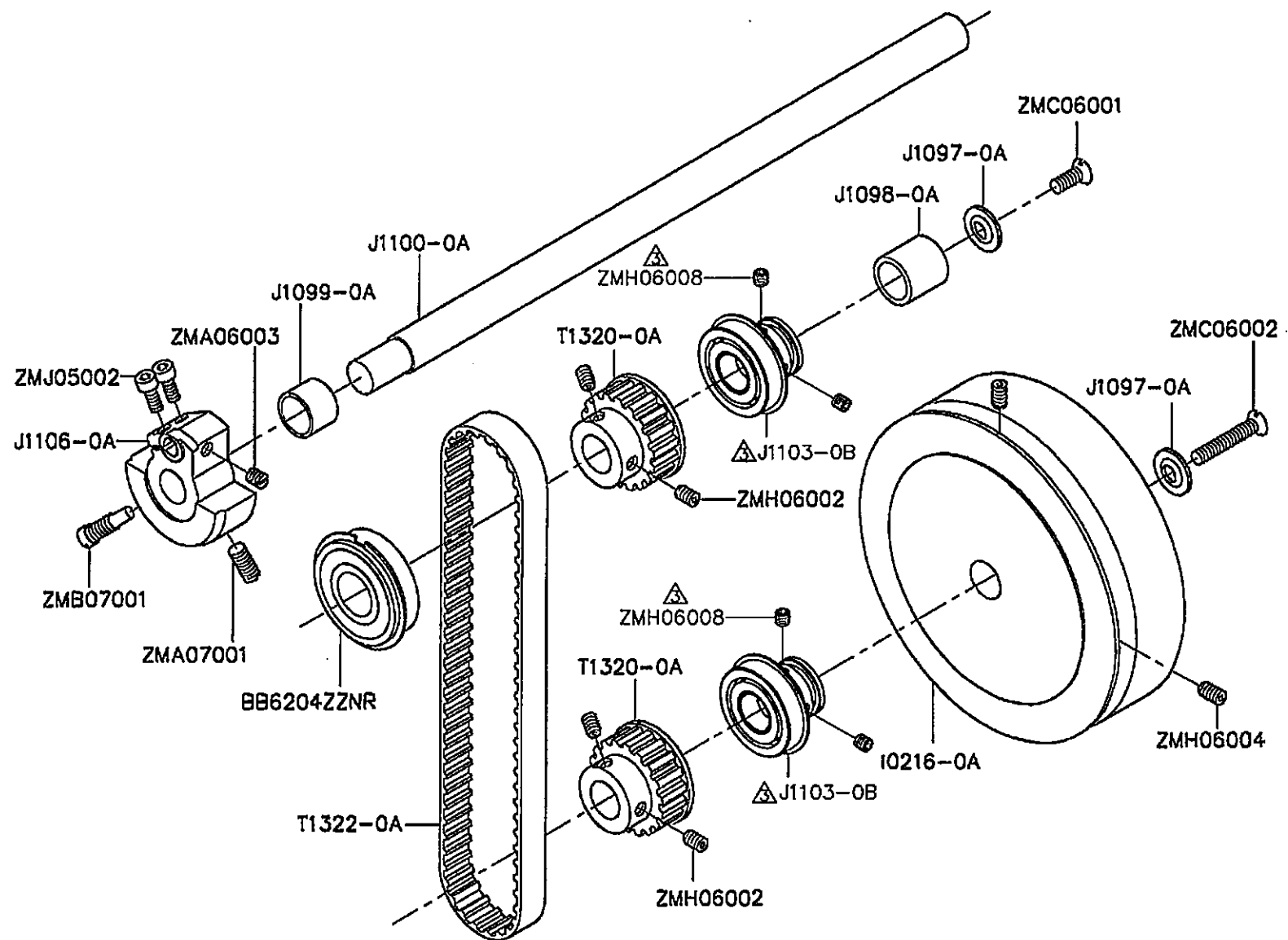
E. CS-8810·CS-8820 天秤機構 TAKE-UP LEVER MECHANISM



## E. CS-8810. CS-8820 天秤機構 TAKE-UP LEVER MECHANISM

零件號碼 Part No	零件名稱	Name of Part	件數 8810	Q, TY 8820	備註 Remarks
BB-624ZZ	滾珠軸承	Ball Bearing	1	1	
BB-688ZZ	滾珠軸承	Ball Bearing	2	2	
BN071008	針狀軸承	Needle Bearing	2	2	
BNFJ-1010W	針狀軸承	Needle Bearing	1	1	
J1060-0A	天秤組	Thread Take-up Assy.	1	1	
J1061-0A	天秤固定銷	Take-up Lever Support Stud	1	1	
J1064-0A	天秤架	Take-up Frame	1	1	
J1065-0A	天秤桿	Take-up Lever	1	1	
J1065-1A	線道	Bushing	1	1	
J1066-0A	天秤曲柄	Take-up Crank Pin	1	1	
J1067-0A	針棒連接器	Needle Bar Connecting Crank Rod	1	1	
J1068-0A	定環	Washer	2	2	
J1069-0A	天秤軸套管	Bushing	1	1	
J1074-0A	針棒固定器	Needle Bar commenting Stud	1	1	
RB500080	C形扣環	Retaining Ring	2	2	
WA089005	平墊圈	Washer	1	1	
ZMD04002	螺絲	Screw (M4×0.7×13.5)	1	1	
ZMD05010	螺絲	Screw (M5×0.8×10)	1	1	
ZMH05003	螺絲	Screw (M5×0.8×8)	3	3	

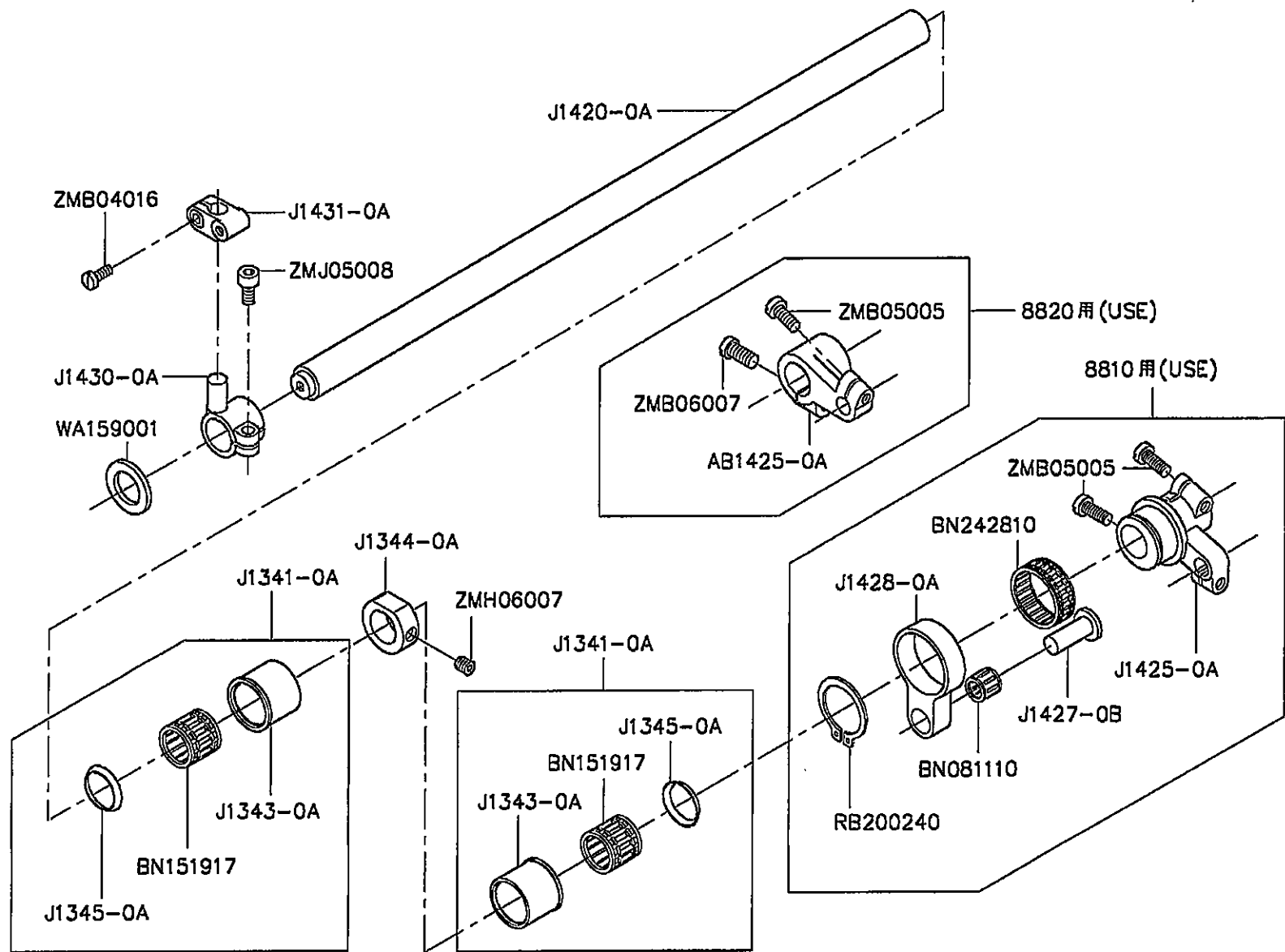
F. CS-8810H·CS-8820H 上軸·皮帶輪機構 UPPER SHAFT AND BALANCE WHEEL MECHANISM



F. CS-8810H. CS-8820H 上軸、皮帶輪機構 UPPER SHAFT AND BALANCE WHEEL MECHANISM

零件號碼	零件名稱	Name of Part	件數	Q, TY	備註
Part No			8810	8820	Remarks
BB6204ZZNR	滾珠軸承	Ball Bearing	1	1	
I0216-0A	皮帶輪	Balance Wheel	1	1	
J1097-0A	墊片	Washer	2	2	
J1098-0A	上軸套管	Bushing	1	1	
J1099-0A	上軸套管	Bushing	1	1	
J1100-0A	上軸	Upper Shaft	1	1	
J1103-0B	上軸套管	Upper Shaft Bushing	2	2	
J1106-0A	凸輪	Crank Cam	1	1	
T1320-0A	齒形皮帶輪	Belt Sprocket	2	2	
T1322-0A	齒形皮帶	Timing Belt	1	1	
ZMA06003	螺絲	Screw (M6×0.75×7)	1	1	
ZMA07001	螺絲	Screw (M7×1×16.5)	1	1	
ZMB07001	螺絲	Screw (M7×1×22)	1	1	
ZMC06001	螺絲	Screw (M6×1×16)	1	1	
ZMC06002	螺絲	Screw (M6×1×35)	1	1	
ZMH06002	螺絲	Screw (M6×0.75×7.5)	4	4	
ZMH06004	螺絲	Screw (M6×0.75×10)	2	2	
ZMH06008	螺絲	Screw (M6×1×6)	4	4	
ZMJ05002	螺絲	Screw (M5×0.8×12)	2	2	

G.CS-8810・CS-8820 上邊心機構 UPPER SIDE SHAFT MECHANISM

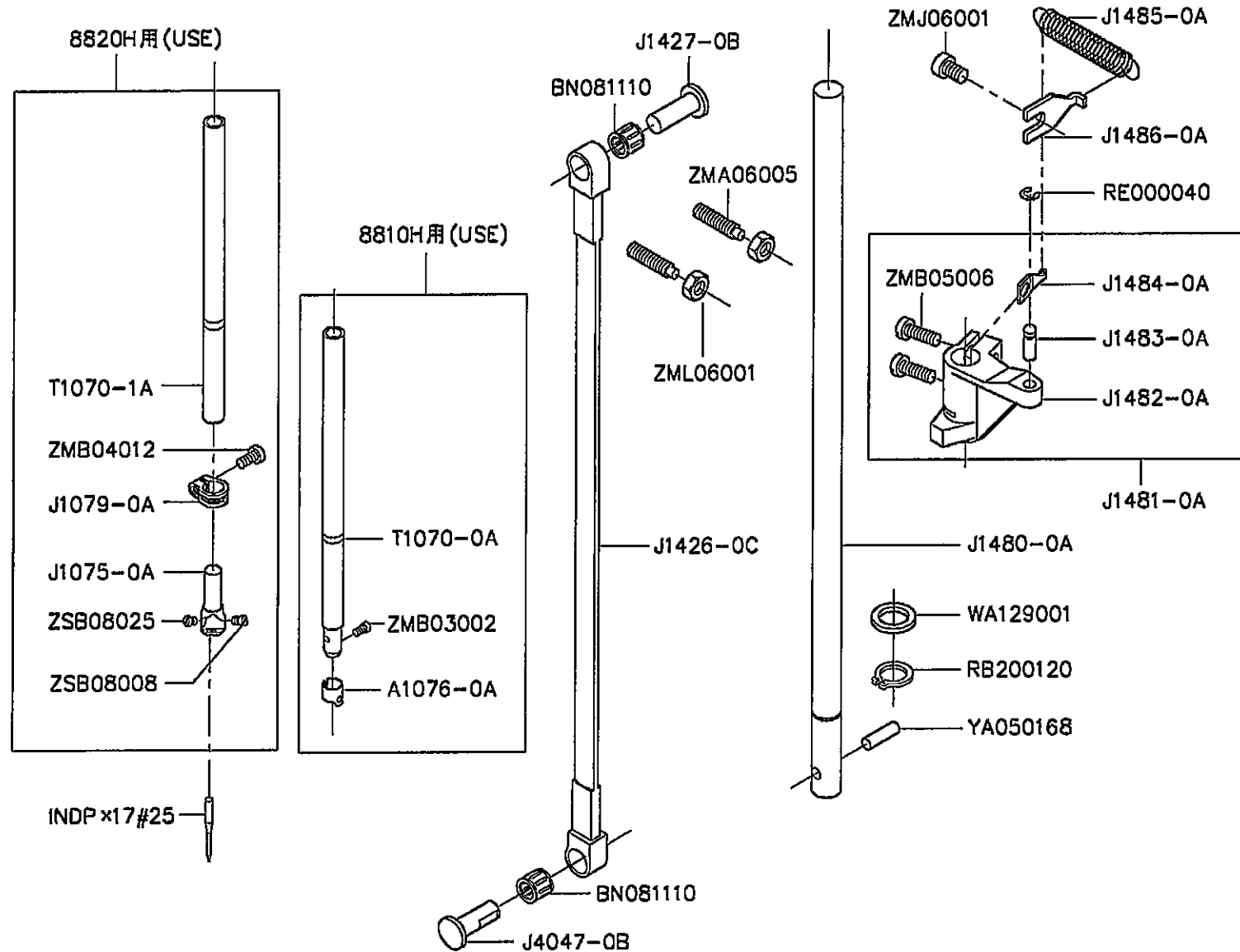


G. CS-8810. CS-8820 上邊心機構 UPPER SIDE SHAFT MECHANISM

零件號碼 Part No	零件名稱	Name of Part	件數 8810	Q, TY 8820	備註 Remarks
AB1425-0A	上邊軸支管	Supporting Arm	0	1	
BN081110	針狀軸承	Needle Bearing	1	0	
BN151917	針狀軸承	Needle Bearing	2	2	
BN242810	針狀軸承	Needle Bearing	1	0	
J1341-0A	軸套管	Bushing	2	2	
J1343-0A	套管	Bushing	2	2	
J1344-0A	定環	Collar	1	1	
J1345-0A	盤型墊圈	Washer	2	2	
J1420-0A	上邊心	Upper Side Shaft	1	1	
J1425-0A	小凸輪	Crank with eccentric	1	0	
J1427-0B	固定銷	Pin	1	0	
J1428-0A	凸輪連桿	Eccentric With Rod	1	0	
J1430-0A	萬向連結頭	Crank	1	1	
J1431-0A	萬向連結座	Clamp	1	1	
RB200240	C形扣環	Retaining Ring	1	0	
WA159001	平墊圈	Washer	1	1	
ZMB04016	螺絲	Screw (M4×0.7×10)	1	1	
ZMB05005	螺絲	Screw (M5×0.8×13)	2	1	
ZMB06007	螺絲	Screw (M6×1.0×13)	0	1	
ZMH06007	螺絲	Screw (M6×0.75×5)	1	1	
ZMJ05008	螺絲	Screw (M5×0.8×10)	1	1	



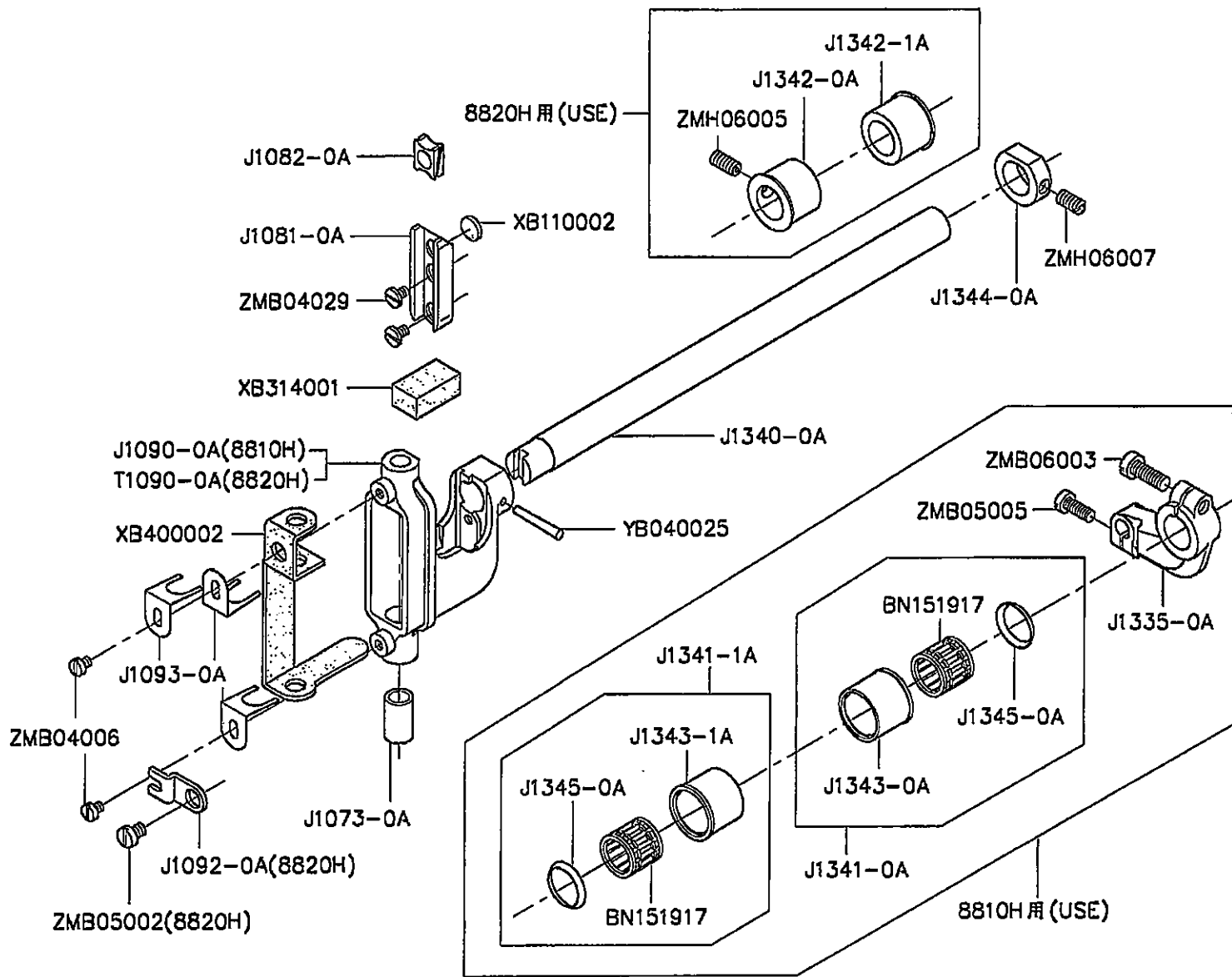
H.CS-8810H・CS-8820H 針棒機構 NEEDLE BAR MECHANISM



H. CS-8810H. CS-8820H 針棒機構 NEEDLE BAR MECHANISM

零件號碼 Part No	零件名稱	Name of Part	件數 8810	Q, TY 8820	備註 Remarks
A1076-0A	針棒線掛	Thread Guide	1	0	
BN081110	針狀軸承	Needle Bearing	2	2	
INDP×5#16	針	Needle	1	2	
J1075-0A	針榴	Needle Holder	0	1	
J1079-0A	針棒套夾	Ring Clamp	0	1	
J1426-0C	連桿	Connecting Rod	1	1	
J1427-0B	固定銷	Pin	1	1	
J1480-0A	腳押動軸	Shaft	1	1	
J1481-0A	腳弓調整扭頭組	Crank Assy.	1	1	
J1482-0A	上下輸送臂	Crank	1	1	
J1483-0A	彈簧固定銷	Pin	1	1	
J1484-0A	彈簧固定板	Bracket	1	1	
J1485-0A	拉伸彈簧	Spring	1	1	
J1486-0A	彈簧固定板	Spring Plate	1	1	
J4047-0B	固定銷	Pin	1	1	
RB200120	C形扣環	Retaining Ring	1	1	
RE000040	E形扣環	E-Ring	1	1	
T1070-0A	針棒	Needle Bar	1	0	
T1070-1A	針棒	Needle Bar	0	1	
WA129001	墊片	Washer	1	1	
YA050168	銷	Pin	1	1	
ZMA06005	螺絲	Screw (M6×1×25)	2	2	
ZMB03002	螺絲	Screw (M3×0.5×4)	1	0	
ZMB04012	螺絲	Screw (M4×0.7×8)	0	1	
ZMB05006	螺絲	Screw (M5×0.8×16)	2	2	
ZMJ06001	螺絲	Screw (M6×1×8)	1	1	
ZML06001	螺母	Nut (M6×1×4.8)	2	2	
ZSB08008	螺絲	Screw (1/8-44×4)	0	1	
ZSB08025	螺絲	Screw (1/8-44×3)	0	1	

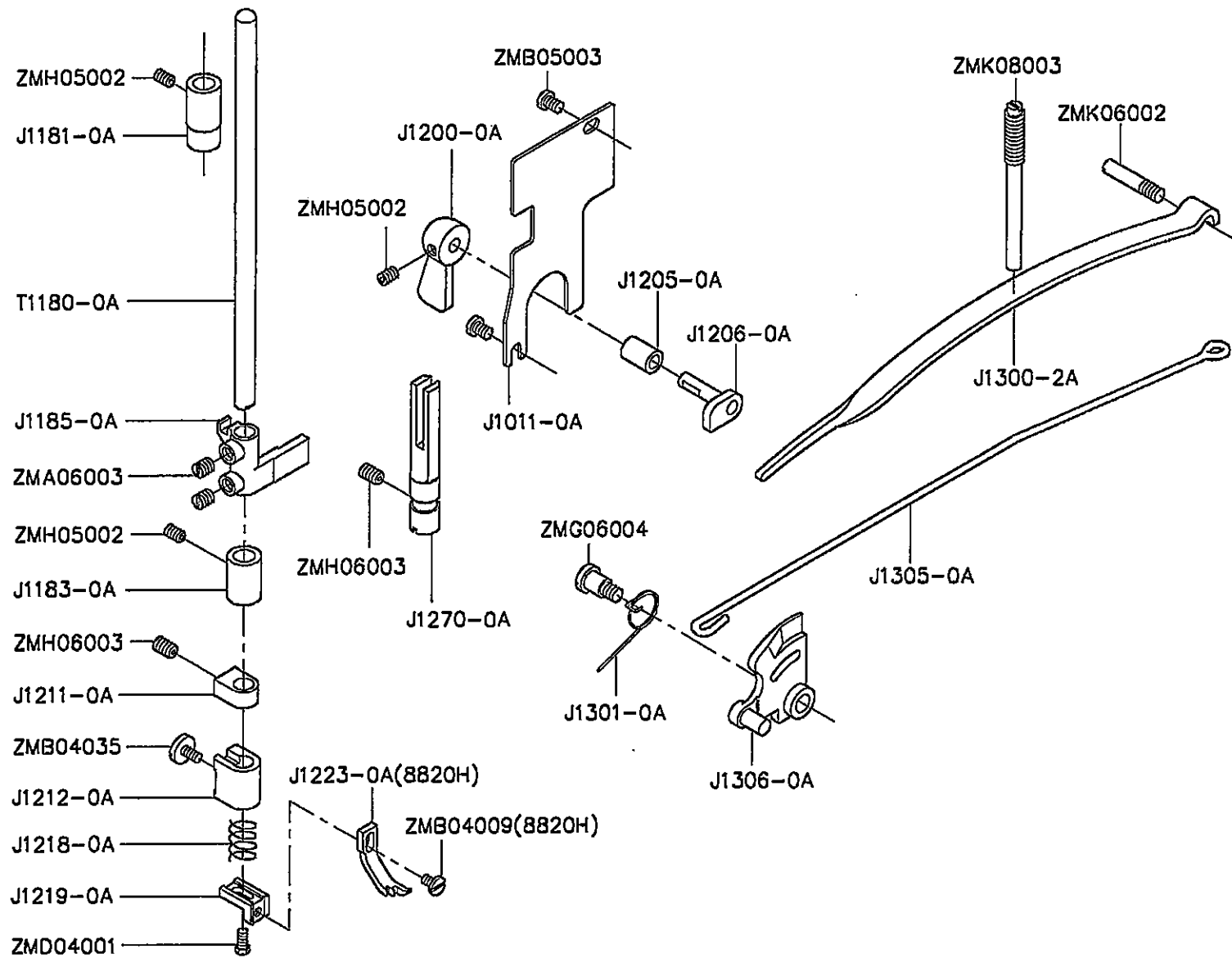
I. CS-8810H・CS-8820H 針棒搖擺機構 NEEDLE BAR ROCKING MECHANISM



I. CS-8810H. CS-8820H 針棒搖擺機構 NEEDLE BAR ROCKING MECHANISM

零件號碼 Part No	零件名稱	Name of Part	件數 8810	Q, TY 8820	備註 Remarks
BN151917	針狀軸承	Needle Bearing	2	0	
J1073-0A	針棒套管	Needle Bar Bushing	1	1	
J1081-0A	針棒連接器導槽	Needle Bar Connecting Link Guide	1	1	
J1082-0A	針棒導引滑塊	Needle Bar Guide Slide Block	1	1	
J1090-0A	針棒座	Needle Bar Support Frame	1	0	
J1092-0A	針棒座固定板	Needle Bar Support Frame Retainer	0	1	
J1093-0A	油棉壓板	Holder	3	3	
J1335-0A	針送支臂	Crank	1	0	
J1340-0A	針送主軸	Needle Bar Shaft	1	1	
J1341-0A	軸套管	Bushing	1	0	
J1341-1A	軸套管	Bushing	1	0	
J1342-0A	套管	Bushing	0	1	
J1342-1A	套管	Bushing	0	1	
J1343-0A	套管	Bushing	1	0	
J1343-1A	套管	Bushing	1	0	
J1344-0A	定環	Collar	1	1	
J1345-0A	盤形墊圈	Washer	2	0	
T1090-0A	針棒座	Needle Bar Support Frame	0	1	
XB110002	油棉	Oil Felt	1	1	
XB314001	油棉	Oil Felt	1	1	
XB400002	油棉	Oil Felt	1	1	
YB040025	推拔銷	Taper Pin	1	1	
ZMB04006	螺絲	Screw (M4×0.7×4.5)	2	2	
ZMB04029	螺絲	Screw (M4×0.7×6)	2	2	
ZMB05002	螺絲	Screw (M5×0.8×6)	0	1	
ZMB05005	螺絲	Screw (M5×0.8×13)	1	0	
ZMB06003	螺絲	Screw (M6×1×16)	1	0	
ZMH06005	螺絲	Screw (M6×1.0×12)	0	1	
ZMH06007	螺絲	Screw (M6×0.75×5)	1	1	

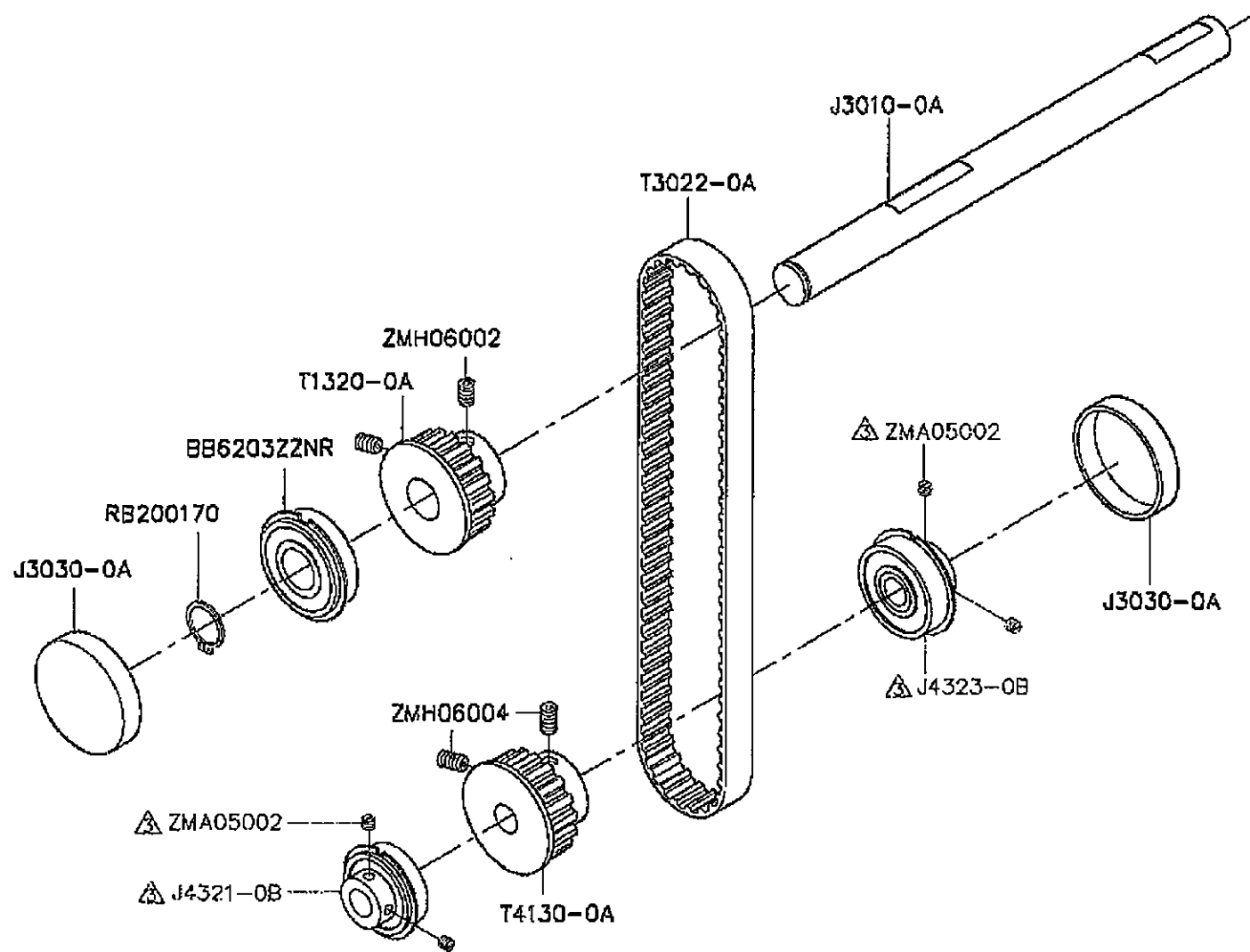
J. CS-8810H、CS-8820H 押棒機構 PRESSER FOOT BAR MECHANISM



J. CS-8810H. CS-8820H 押棒機構 PRESSER FOOT BAR MECHANISM

零件號碼 Part No	零件名稱	Name of Part	件數 8810	Q, TY 8820	備註 Remarks
J1011-0A	小防砂板	Cover	1	1	
J1181-0A	押棒套管(上)	Presser Bar Bushing (Upper)	1	1	
J1183-0A	押棒套管(下)	Presser Bar Bushing (Lower)	1	1	
J1185-0A	押棒固定座	Presser Bar Holder	1	1	
J1200-0A	押棒提桿	Presser Bar Lifter	1	1	
J1205-0A	押棒提桿套管	Presser Bar Lifter Bushing	1	1	
J1206-0A	押棒提桿軸	Cam Shaft	1	1	
J1211-0A	輪錢上座	Roller Presser Holder	1	1	
J1212-0A	輪錢下座	Roller Presser Holder	1	1	
J1218-0A	彈簧	Spring	1	1	
J1219-0A	頂針座	Angle	1	1	
J1223-0A	壓腳	Presser Foot	0	1	
J1270-0A	軌導棒	Stand	1	1	
J1300-2A	彈片壓板	Presser Plate Spring	1	1	
J1301-0A	彈簧	Spring	1	1	
J1305-0A	腳弓連接槓桿	Knee Lifter Connecting Lever	1	1	
J1306-0A	沙拉心座組	Lifting Lever Assy.	1	1	
T1180-0A	押棒	Presser Bar	1	1	
ZMA06003	螺絲	Screw (M6x0.75x7)	2	2	
ZMB04009	螺絲	Screw (M4x0.7x6)	0	1	
ZMB04035	螺絲	Screw (M4x0.7x8)	1	1	
ZMB05003	螺絲	Screw (M5x0.8x6)	2	2	
ZMD04001	螺絲	Screw (M4x0.7x8.5)	1	1	
ZMG06004	螺絲	Screw (M6x1x8)	1	1	
ZMH05002	螺絲	Screw (M5x0.8x6)	2	2	
ZMH06003	螺絲	Screw (M6x1x8)	2	2	
ZMK06002	螺絲	Screw	1	1	
ZMK08003	螺絲	Screw	1	1	

K. CS-8810、CS-8820 皮帶傳動機構 TIMING BELT DRIVING MECHANISM

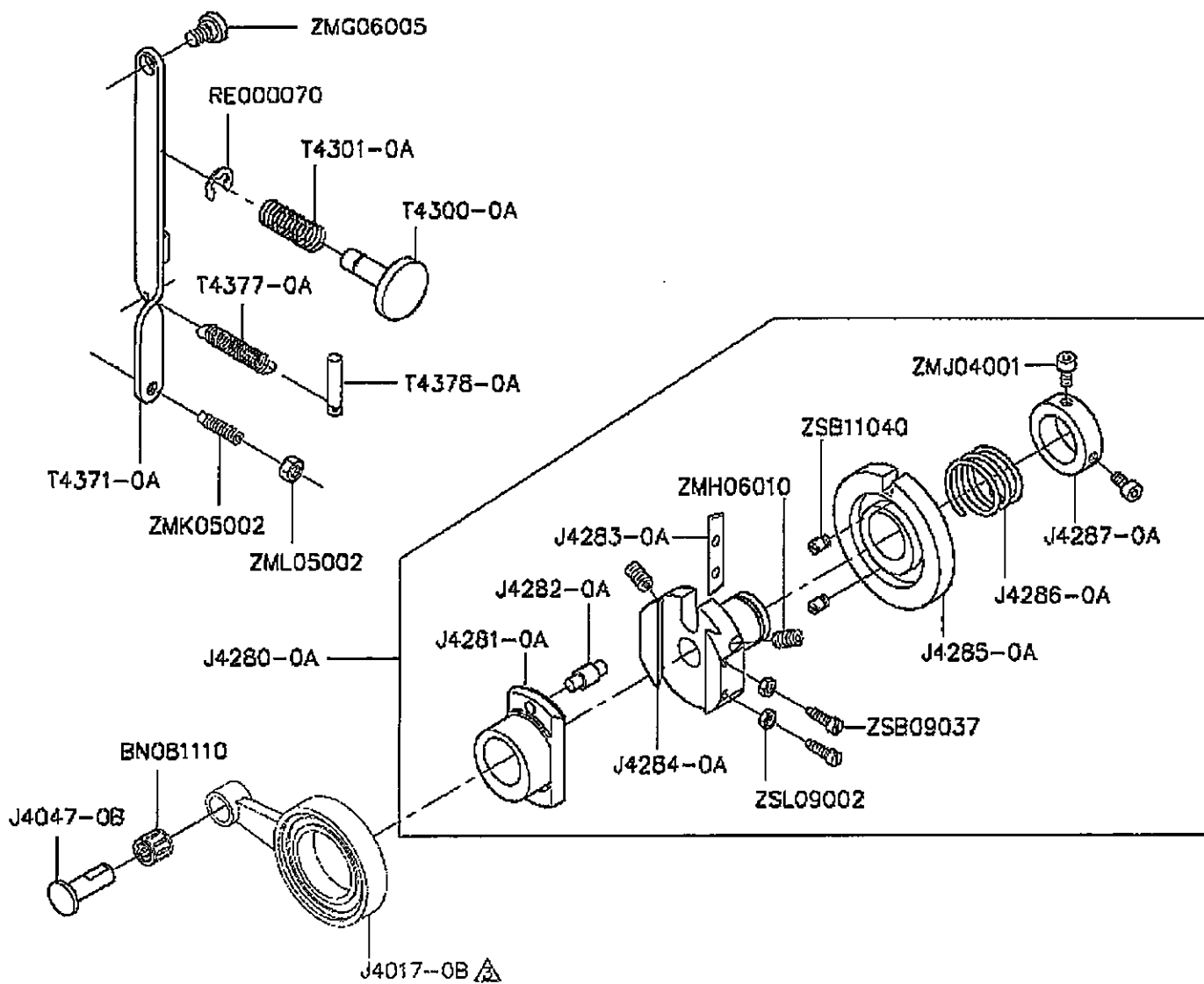


K. CS-8810. CS-8820 皮帶傳動機構 TIMING BELT DRIVING MECHANISM

零件號碼 Part No	零件名稱	Name of Part	件數 8810	Q, TY 8820	備註 Remarks
BB6203ZZNR	滾珠軸承	Ball Bearing	1	1	
J3010-0A	皮帶輪軸	Shaft	1	1	
J3030-0A	保護蓋	Plug	2	2	
J4321-0B	軸承套管(左)	Collar (Left)	1	1	
J4323-0B	軸承套管(右)	Collar (Right)	1	1	
RB200170	C形扣環	Retaining Ring	1	1	
T1320-0A	齒形皮帶輪	Timing Belt Wheel	1	1	
T3022-0A	齒形皮帶	Timing Belt	1	1	
T4130-0A	齒形皮帶輪	Timing Belt Wheel	1	1	
ZMA05002	螺絲	Screw (M5×0.8×0.45)	4	4	
ZMH06002	螺絲	Screw (M6×0.75×8)	2	2	
ZMH06004	螺絲	Screw (M6×0.75×10)	2	2	



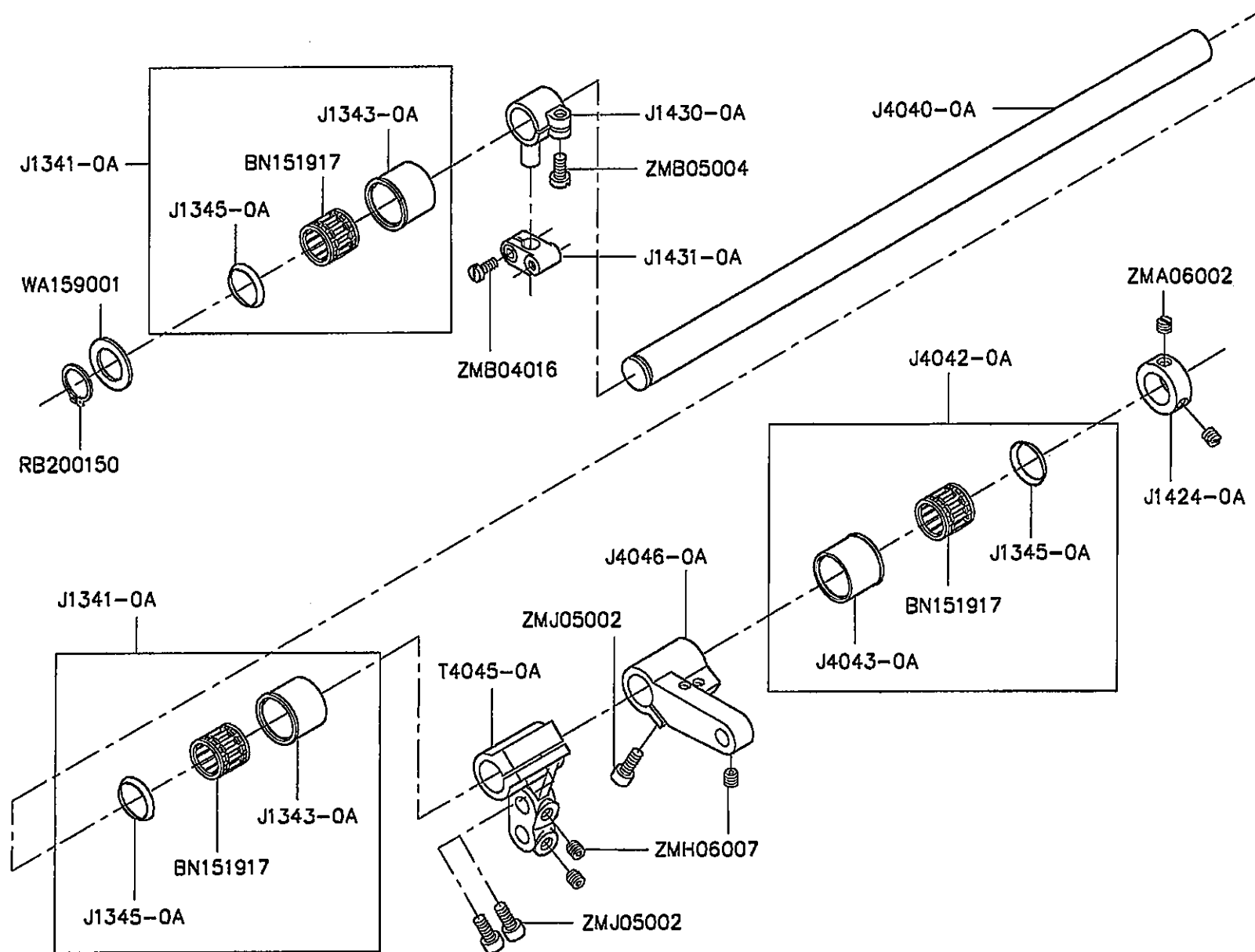
L. CS-8810 · CS-8820 縫目調整器機構 STITCH REGULATOR MECHANISM



L. CS-8810. CS-8820 縫目調整器機構 STITCH REGULATOR MECHANISM

零件號碼 Part No	零件名稱	Name of Part	件數 8810	Q, TY 8820	備註 Remarks
BN081110	針狀軸承	Needle Bearing	1	1	
J4017-0B	連桿	Connecting Rod	1	1	
J4047-0B	固定銷	Bearing Stud	1	1	
J4280-0A	凸輪組	Cam Assy.	1	1	
J4281-0A	縫目調整座	Stitch Regulating Seat	1	1	
J4282-0A	偏心調整支軸	Feed Adjusting Screw	1	1	
J4283-0A	迫緊片	Friction Plate	1	1	
J4284-0A	縫目調整固定座	Stitch regulating Fix Seat	1	1	
J4285-0A	縫目調整偏心輪	Eccentric Wheel	1	1	
J4286-0A	彈簧	Spring	1	1	
J4287-0A	套環	Collar	1	1	
RE000070	E形扣環	E-ring	1	1	
T4300-0A	銷	Pin	1	1	
T4301-0A	彈簧	Spring	1	1	
T4371-0A	送料調節板	Feeding Adjusting Plate	1	1	
T4377-0A	彈簧	Spring	1	1	
T4378-0A	彈簧固定銷	Pin	1	1	
ZMG06005	螺絲	Screw (M6×1.0)	1	1	
ZMH06010	螺絲	Screw (M6×0.75×10)	2	2	
ZMJ04001	螺絲	Screw (M4×0.7×8)	2	2	
ZMK05002	螺絲	Screw (M5×0.8)	1	1	
ZML05002	螺母	Nut (M5×0.8×4)	1	1	
ZSB09037	螺絲	Screw (9/64-40×12)	2	2	
ZSB11040	螺絲	Screw (11/64-40×2.5)	2	2	
ZSL09002	螺母	Nut (9/64-40×2.5)	2	2	

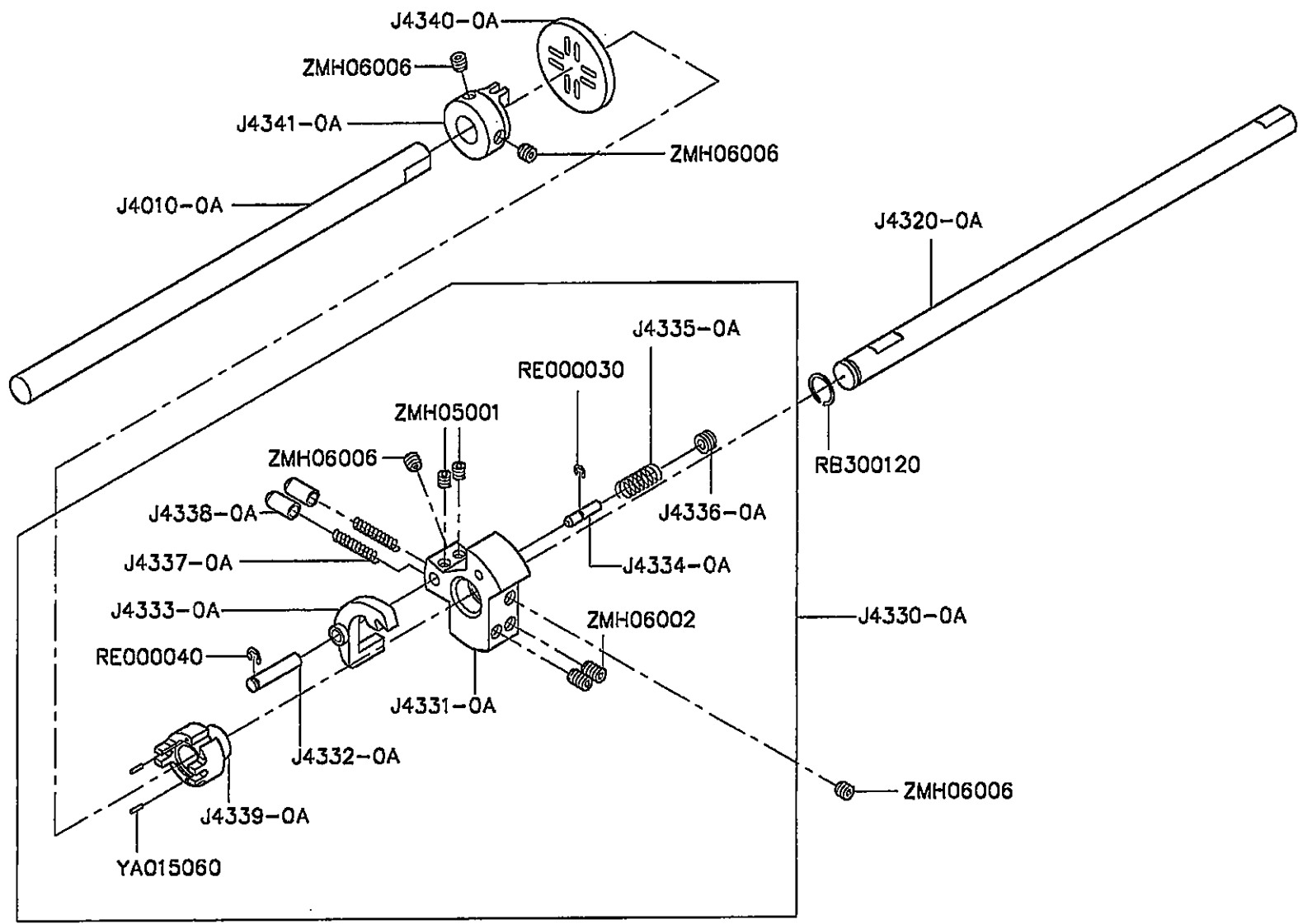
M.CS-8810H・CS-8820H 輸送軸機構 FEED SHAFT MECHANISM



M. CS-8810H. CS-8820H 輸送軸機構 FEED SHAFT MECHANISM

零件號碼 Part No	零件名稱	Name of Part	件數 8810	Q, TY 8820	備註 Remarks
BN151917	針狀軸承	Needle Bearing	3	3	
J1341-0A	軸套管	Bushing	2	2	
J1343-0A	套管	Bushing	2	2	
J1345-0A	盤形墊圈	Washer	3	3	
J1424-0A	上邊心定環	Collar	1	1	
J1430-0A	萬向聯結頭	Crank	1	1	
J1431-0A	萬向聯結座	Clamp	1	1	
J4040-0A	輸送主軸	Shaft	1	1	
J4042-0A	輸送軸套管	Bushing	1	1	
J4043-0A	套管	Bushing	1	1	
J4045-0A	單向輸送支臂	Crank	1	1	
J4046-0A	單向輸送支臂	Crank	1	1	
RB200150	C形扣環	Retaining Ring	1	1	
WA159001	平墊圈	Washer	1	1	
ZMA06002	螺絲	Screw (M6×0.75×4.5)	2	2	
ZMB04016	螺絲	Screw (M4×0.7×10)	1	1	
ZMB05004	螺絲	Screw (M5×0.8×10)	1	1	
ZMH06007	螺絲	Screw (M6×0.75×5)	3	3	
ZMJ05002	螺絲	Screw (M5×0.8×12)	4	4	

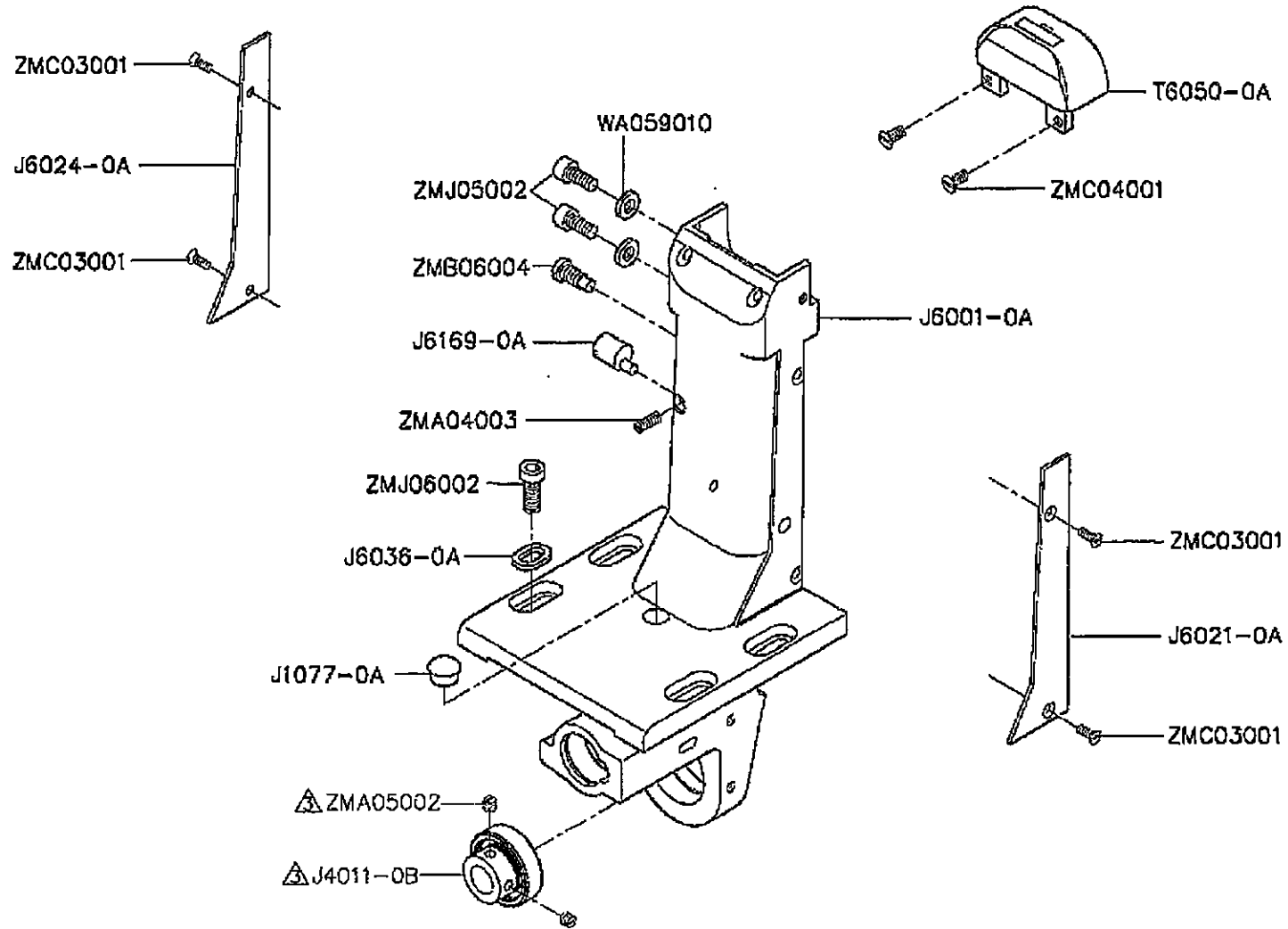
N.CS-8810·CS-8820 離合器組機構 CLUTCH SET MECHANISM



N. CS-8810. CS-8820 離合器組機構 CLUTCH SET MECHANISM

零件號碼 Part No	零件名稱	Name of Part	件數 8810	Q, TY 8820	備註 Remarks
J4010-0A	萬向聯結軸(短)	Shaft	1	1	
J4320-0A	萬向聯結軸	Shaft	1	1	
J4330-0A	離合器組	Safety Clutch	1	1	
J4331-0A	離合器座	Safety Clutch Seat	1	1	
J4332-0A	固定銷	Hinge Stud	1	1	
J4333-0A	離合器爪	Latch	1	1	
J4334-0A	固定銷	Drop-in Pin	1	1	
J4335-0A	壓縮彈簧	Spring	1	1	
J4336-0A	固定螺絲	Ring	1	1	
J4337-0A	彈簧	Spring	2	2	
J4338-0A	彈簧固定套	Stud	2	2	
J4339-0A	軸連器(右)	Coupler (Right)	1	1	
J4340-0A	連接板	Connecting Plate	1	1	
J4341-0A	軸連器(左)	Coupler (Left)	1	1	
RB300120	C形扣環	Retaining Ring	1	1	
RE000030	E形扣環	E-Ring	1	1	
RE000040	E形扣環	E-Ring	1	1	
YA015060	銷	Pin	2	2	
ZMH05001	螺絲	Screw (M5×0.8×5)	2	2	
ZMH06002	螺絲	Screw (M6×0.75×7.5)	2	2	
ZMH06006	螺絲	Screw (M6×0.75×6)	4	4	

O. CS-8810H 中座機構 CENTRAL BRACKET MECHANISM

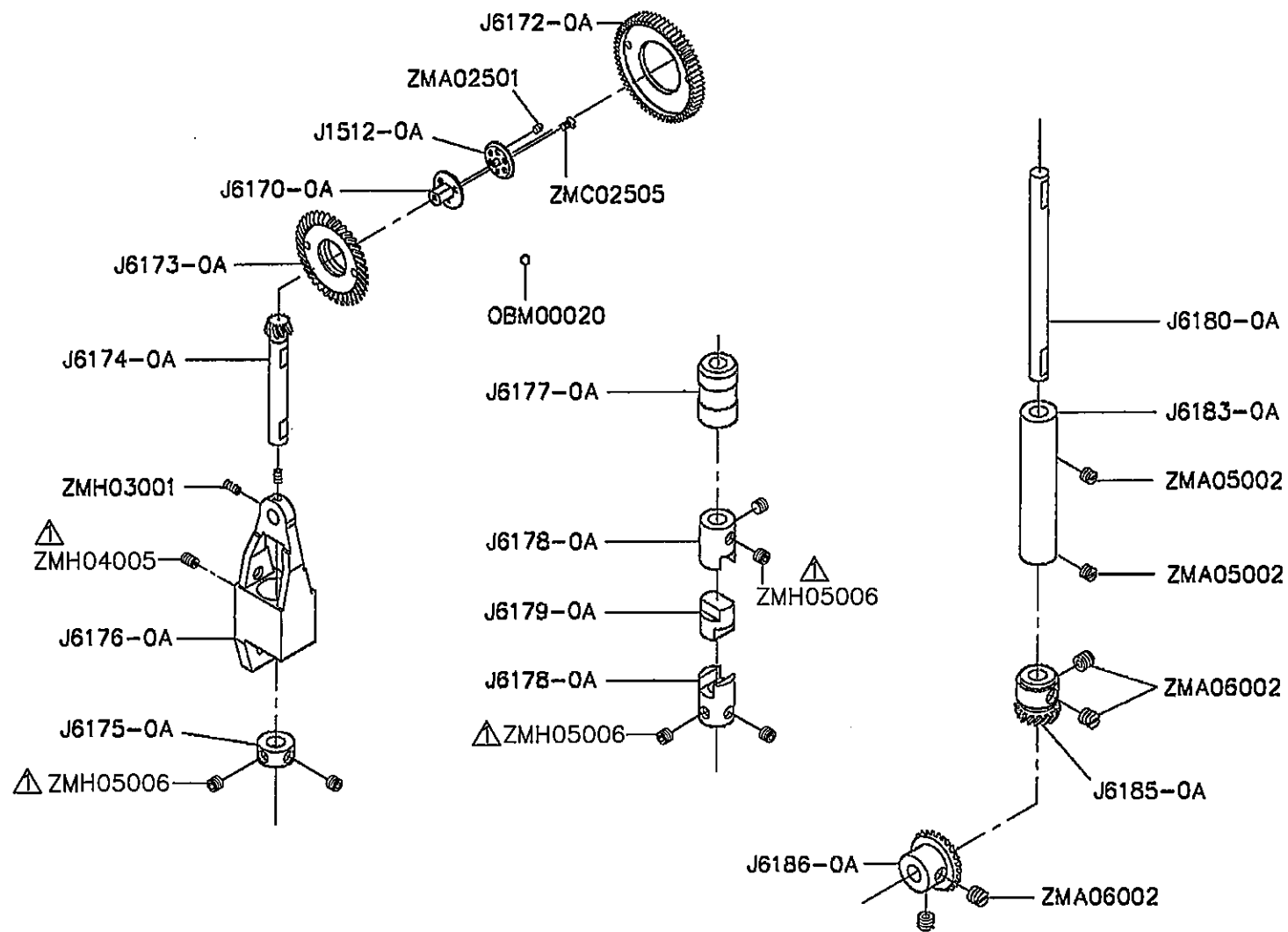


O. CS-8810H 中座機構 CENTRAL BRACKET MECHANISM

零件號碼 Part No	零件名稱	Name of Part	件數 Q, TY	備註 Remarks
J1077-0A	油蓋	Oil Cap	1	
J4011-0B	主軸套管	Collar	1	
J6001-0A	單針中座	Support Plate	1	
J6021-0A	邊蓋板	Cover Plate	1	
J6024-0A	邊蓋板	Cover Plate	1	
J6036-0A	平墊圈	Washer	4	
J6169-0A	調整銷	Stud Pin	1	
T6050-0A	單針針板	Needle Plate	1	
WA059010	平墊圈	Washer	2	
ZMA04003	螺絲	Screw (M4×0.7×10)	1	
ZMA05002	螺絲	Screw (M5×0.8×4.5)	2	
ZMB06004	螺絲	Screw (M6×1×14)	1	
ZMC03001	螺絲	Screw (M3×0.5×8.5)	4	
ZMC04001	螺絲	Screw (M4×0.7×8.5)	2	
ZMJ05002	螺絲	Screw (M5×0.8×12)	2	
ZMJ06002	螺絲	Screw (M6×1×15)	4	



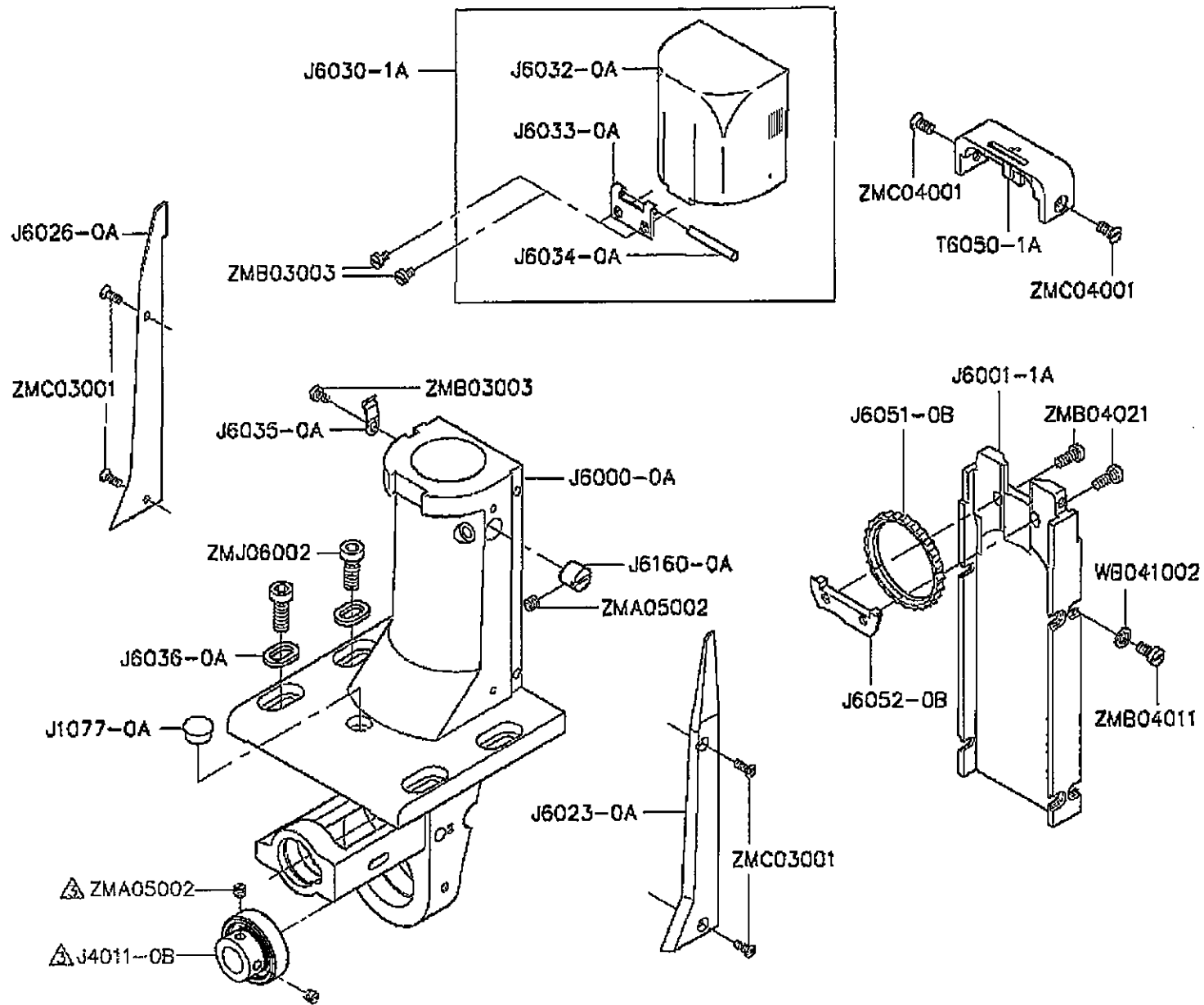
O. CS-8810 中座機構 CENTRAL BRACKET MECHANISM



0. CS-8810 中座機構 CENTRAL BRACKET MECHANISM

零件號碼 Part No	零件名稱	Name of Part	件數 Q, TY	備註 Remarks
J1512-0A	送料齒輪軸(前)	Roller Bracket (Front)	1	
J6170-0A	送料齒輪軸(上)	Roller Bracket (Upper)	1	
J6172-0A	送料齒	Feed Wheel	1	
J6173-0A	送料齒輪(上)	Bevel Gear (Upper)	1	
J6174-0A	送料齒輪(下)	Bevel Gear (Lower)	1	
J6175-0A	定環	Collar	1	
J6176-0A	蝸線齒輪座	Bracket	1	
J6177-0A	送料齒輪套管	Bushing	1	
J6178-0A	軸連接器	Bushing	2	
J6179-0A	塑膠接頭	Clutch	1	
J6180-0A	中座軸	Shaft	1	
J6183-0A	套管	Bushing	1	
J6185-0A	中座齒輪(小)	Bevel Gear (Small)	1	
J6186-0A	中座齒輪(中)	Bevel Gear (Medium)	1	
OBM00020	鋼珠	Ball	24	
ZMA02501	螺絲	Screw (M2.5×0.45×2)	3	
ZMA05002	螺絲	Screw (M5×0.8×4.5)	2	
ZMA06002	螺絲	Screw (M6×0.75×4.5)	4	
ZMC02505	螺絲	Screw (M2.5×0.45×4.8)	3	
ZMH03001	螺絲	Screw (M3×0.5×4)	2	
ZMH04005	螺絲	Screw (M4×0.7×6)	1	
ZMH05006	螺絲	Screw (M5×0.8×4)	6	

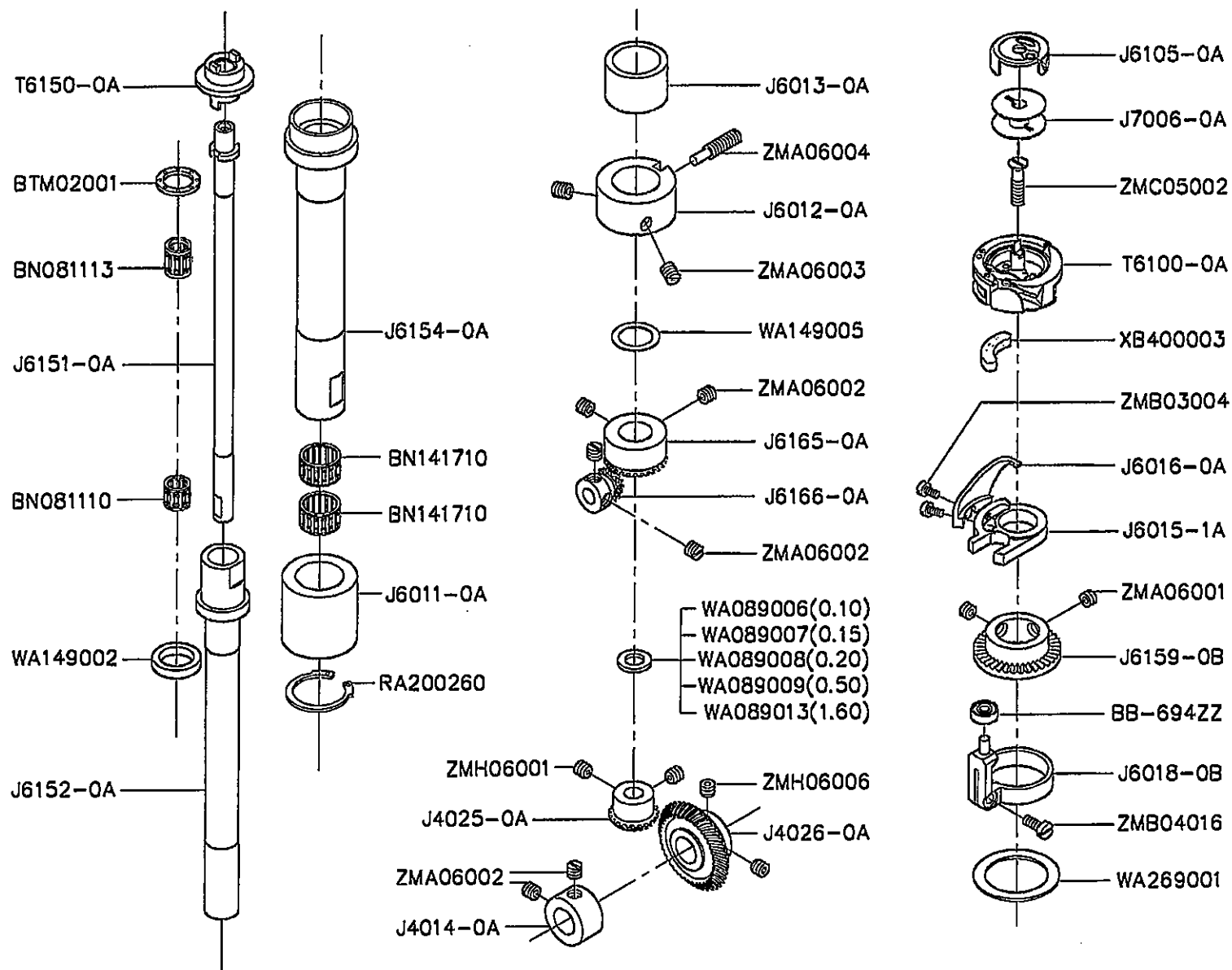
P. CS-8820H 左邊邊座、中座機構 LEFT SIDE BRACKET AND CENTRAL BRACKET MECHANISM



P. CS-8820H 左邊邊座. 中座機構 LEFT SIDE BRACKET MECHANISM

零件號碼 Part No	零件名稱	Name of Part	件數 Q, TY	備註 Remarks
J1077-0A	油蓋	Plug	1	
J4011-0B	主軸套管	Collar	1	
J6000-0A	附耳邊座(左)	Side Bracket (Left)	1	
J6001-1A	雙針中座	Support Plate	1	
J6023-0A	邊蓋板	Cover Plate	1	
J6026-0A	邊蓋板	Cover Plate	1	
J6030-1A	釜蓋	Post Cap Assy.	1	
J6032-0A	護蓋	Post Cap	1	
J6033-0A	活動板	Hinge	1	
J6034-0A	固定銷	Pin	1	
J6035-0A	彈簧板	Spring	1	
J6036-0A	平墊圈	Washer	4	
J6051-0B	送料輪	Feed Wheel	1	
J6052-0B	送料輪固定板	Bearing Plate	1	
J6160-0A	調整銷	Eccentric Stud	1	
T6050-1A	雙針針板	Needle Plate	1	
WB041002	彈簧墊圈	Washer	8	
ZMA05002	螺絲	Screw (M5×0.8×4.5)	3	
ZMB03003	螺絲	Screw (M3×0.5×4.7)	3	
ZMB04011	螺絲	Screw (M4×0.7×8)	2	
ZMB04021	螺絲	Screw (M4×0.7×10)	2	
ZMC03001	螺絲	Screw (M4×0.7×8)	8	
ZMC04001	螺絲	Screw (M4×0.7×8.5)	2	
ZMJ06002	螺絲	Screw (M6×1.0×15)	4	

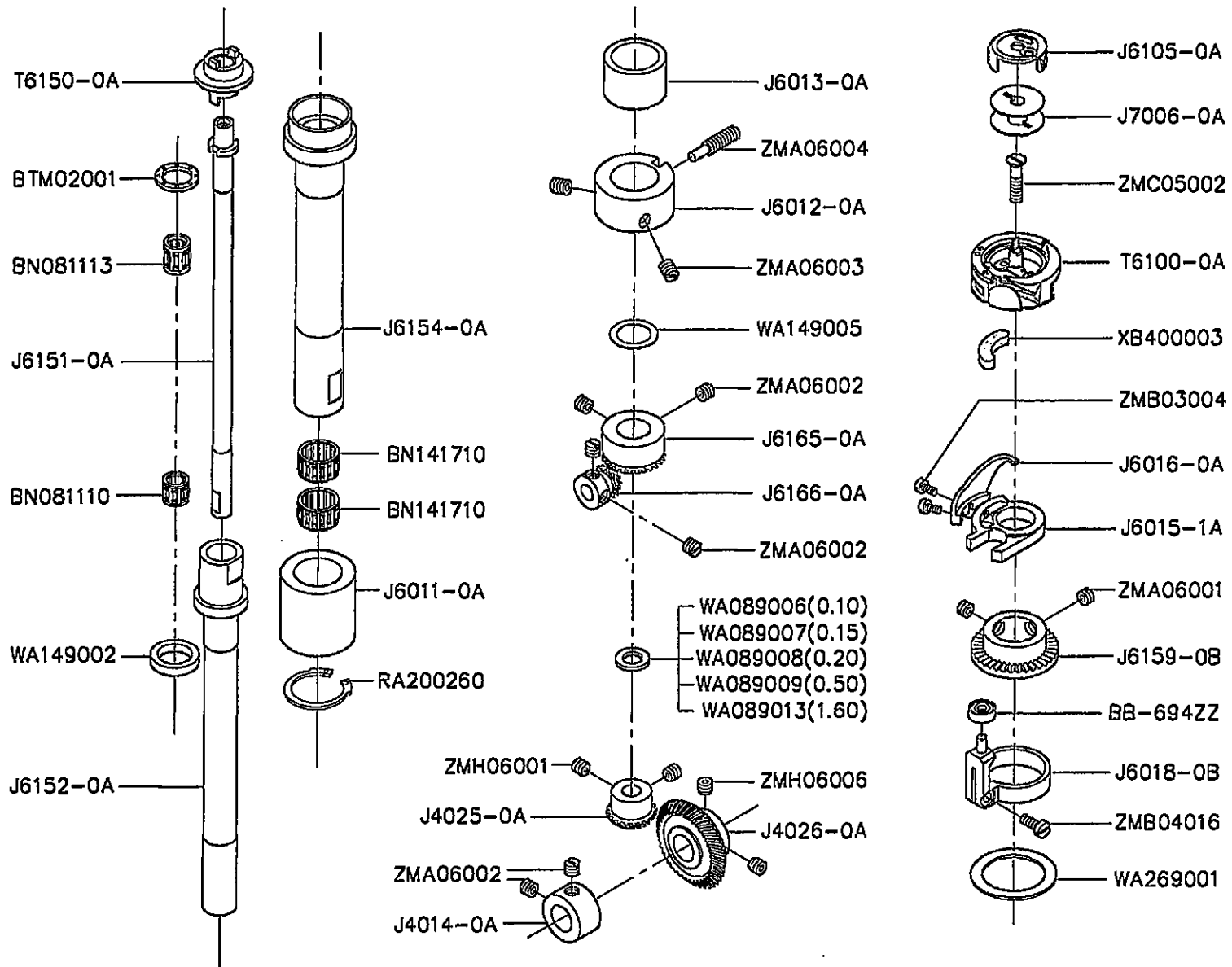
Q. CS-8820H 左邊邊座機構 LEFT SIDE BRACKET MECHANISM



Q. CS-8820H 左邊邊座機構 LEFT SIDE BRACKET MECHANISM

零件號碼 Part No	零件名稱	Name of Part	件數 Q, TY	備註 Remarks
BB-694ZZ	滾珠軸承	Ball Bearing	1	
BN081110	針狀軸承	Needle Bearing	1	
BN081113	針狀軸承	Needle Bearing	1	
BN141710	針狀軸承	Needle Bearing	2	
BTM02001	止推軸承	Thrust Bearing	1	
J4014-0A	定環	Collar	1	
J4025-0A	齒輪(小)	Bevel Gear (Small)	1	
J4026-0A	齒輪(大)	Bevel Gear (Large)	1	
J6011-0A	釜軸套管	Bushing	1	
J6012-0A	釜軸套管	Bushing	1	
J6013-0A	釜軸套管	Bushing	1	
J6015-1A	牛角座	Rotating Hook Opener Bracket	1	
J6016-0A	牛角	Rotating Hook Opener	1	
J6018-0B	牛角固定座	Driver	1	
J6105-0A	梭殼	Bobbin Case	1	
J6150-0A	梭軸頭	Hook Driver	1	
J6151-0A	釜軸	Hook Shaft	1	
J6152-0A	釜軸中套管	Feed Wheel Shaft	1	
J6154-0A	釜軸外套管	Pull-off Shaft	1	
J6159-0B	銅齒	Driving Wheel	1	
J6165-0A	齒輪(大)	Bevel Gear (Large)	1	
J6166-0A	齒輪(小)	Bevel Gear (Small)	1	
J7006-0A	梭心	Bobbin	1	
T6100-0A	梭頭	Hook	1	
T6150-0A	梭軸頭	Hook Driver	1	
WA089006	平墊圈	Washer	1	
WA089007	平墊圈	Washer	1	
WA089008	平墊圈	Washer	1	
WA089009	平墊圈	Washer	1	
WA089013	平墊圈	Washer	1	
WA149002	平墊圈	Washer	1	
WA149005	平墊圈	Washer	1	
WA269001	平墊圈	Washer	1	

Q. CS-8820H 左邊場座機構 LEFT SIDE BRACKET MECHANISM

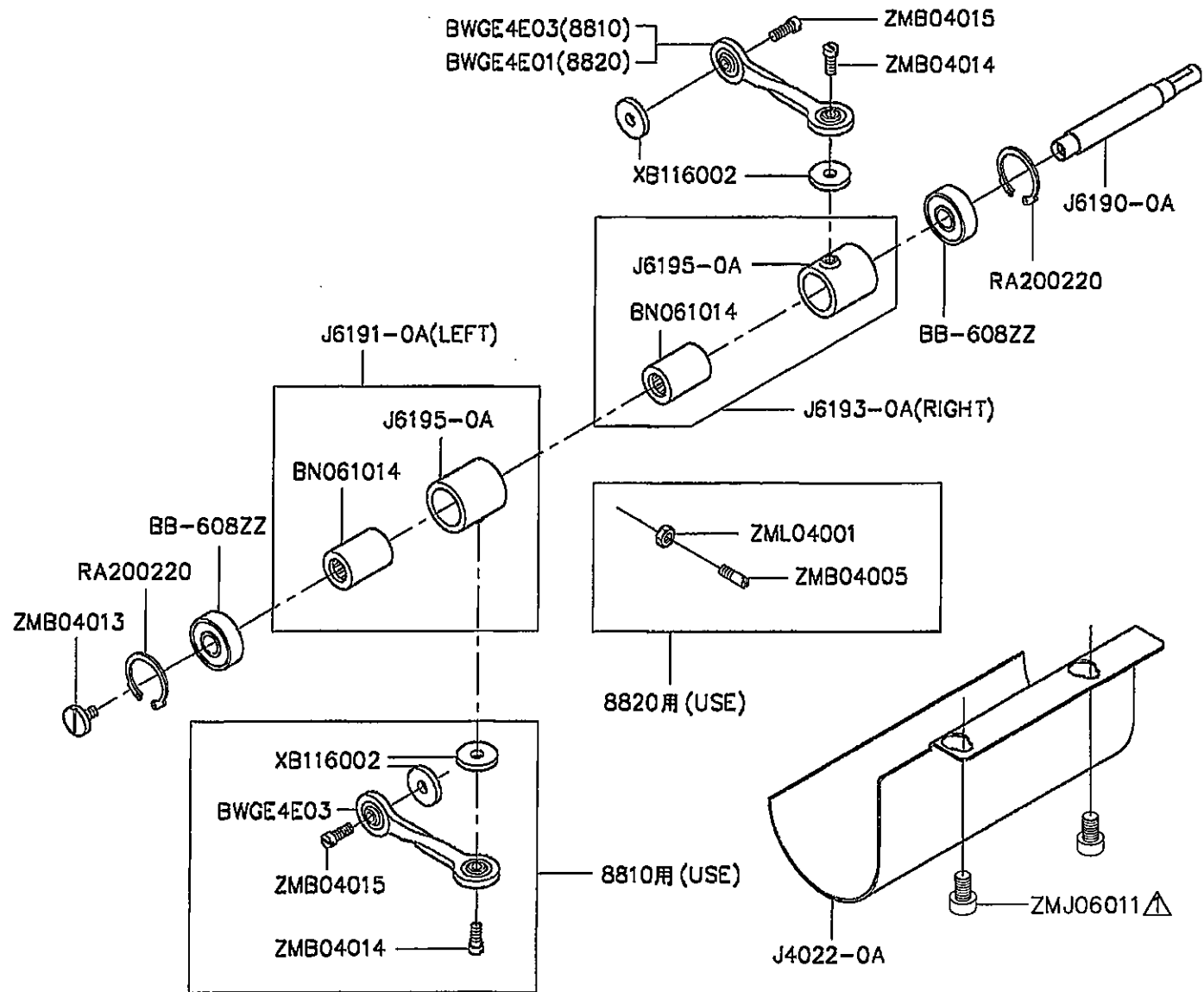


Q. CS-8820H 左邊邊座機構 LEFT SIDE BRACKET MECHANISM

零件號碼 Part No	零件名稱	Name of Part	件數 Q, TY	備註 Remarks
XB400003	油棉	Felt	1	
ZMA06001	螺絲	Screw (M6×0.75×3.5)	2	
ZMA06002	螺絲	Screw (M6×0.75×4.5)	6	
ZMA06003	螺絲	Screw (M6×0.75×7)	2	
ZMA06004	螺絲	Screw (M6×0.75×25)	1	
ZMB03004	螺絲	Screw (M3×0.5×5.7)	2	
ZMB04016	螺絲	Screw (M4×0.7×10)	1	
ZMC05002	螺絲	Screw (M5×0.8×20)	1	
ZMH06001	螺絲	Screw (M6×0.75×4)	2	
ZMH06006	螺絲	Screw (M6×0.75×6)	2	



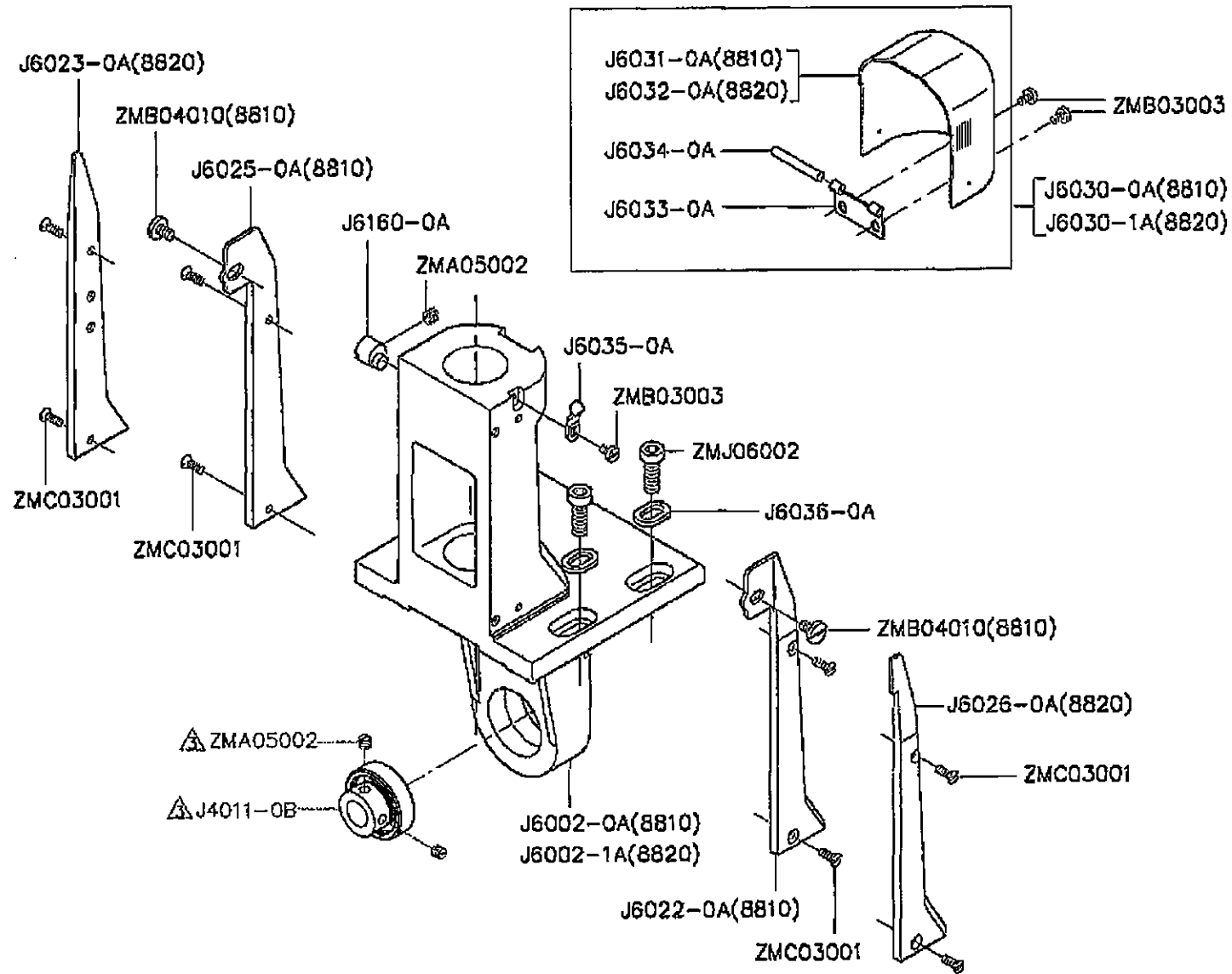
R. CS-8810·CS-8820 送齒輪單向前進機構 FEED WHEEL SINGLE-DIRECTION DRIVING MECHANISM



R. CS-8810 CS-8820 送齒輪單向前進機構 FEED WHEEL SINGLE-DIRECTION DRIVING MECHANISM

零件號碼 Part No	零件名稱 Name of Part	件數 8810	Q, TY 8820	備註 Remarks
BB-608ZZ	滾珠軸承 ----- Ball Bearing -----	2	2	
BN061014	針狀軸承 ----- Needle Bearing -----	2	2	
BWGE4E01	球狀萬向型軸承拉桿 - Link -----	0	1	
BWGE4E03	球狀萬向型軸承拉桿 - Link -----	2	0	
J4022-0A	齒輪護蓋 ----- Cover Plate -----	1	1	
J6190-0A	培林軸 ----- Shaft -----	1	1	
J6191-0A	單向培林座組(左) --- Free-wheeling (Left) -----	1	1	
J6193-0A	單向培林座組(右) --- Free-wheeling (Right) -----	1	1	
J6195-0A	單向培林座 ----- Free-wheeling Seat -----	2	2	
RA200220	C形扣環 ----- Retaining Ring -----	2	2	
XB116002	油棉 ----- Felt -----	4	2	
ZMB04005	螺絲 ----- Screw (M4x0.7x6) -----	0	1	
ZMB04013	螺絲 ----- Screw (M4x0.7x8) -----	1	1	
ZMB04014	螺絲 ----- Screw (M4x0.7x8) -----	2	1	
ZMB04015	螺絲 ----- Screw (M4x0.7x8.5) -----	2	1	
ZMJ06011	螺絲 ----- Screw (M6x1x10) -----	2	2	
ZML04001	螺帽 ----- Nut (M4x0.7x2.3) -----	0	1	

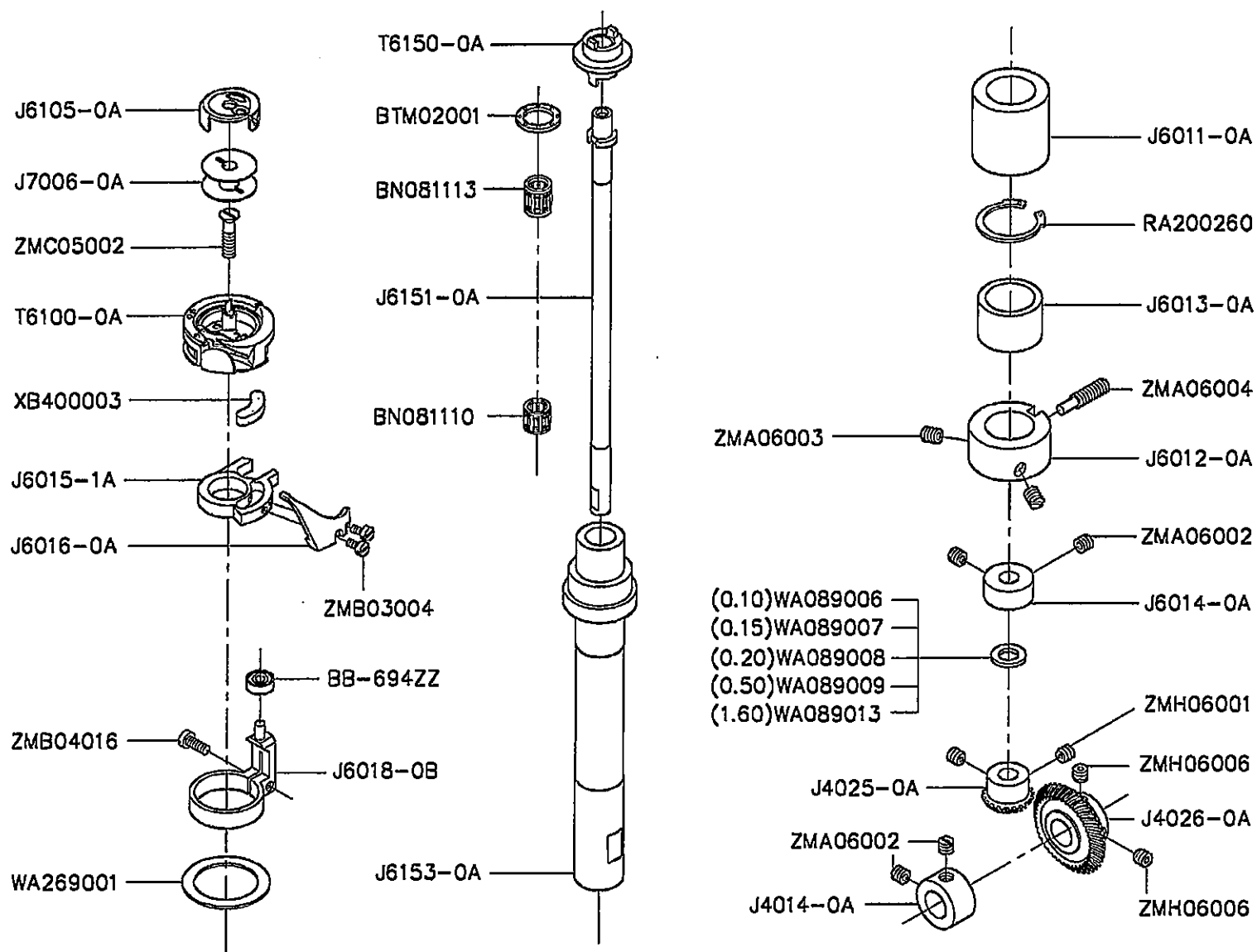
S. CS-8810·CS-8820 右邊邊座機構 RIGHT SIDE BRACKET MECHANISM



S. CS-8810. CS-8820 右邊邊座機構 RIGHT SIDE BRACKET MECHANISM

零件號碼 Part No	零件名稱	Name of Part	件數 8810	Q, TY 8820	備註 Remarks
J4011-0B	主軸套管	Collar	1	1	
J6002-0A	單針邊座	Side Bracket	1	0	
J6002-1A	雙針邊座	Side Bracket	0	1	
J6022-0A	邊蓋板	Cover Plate	1	0	
J6023-0A	邊蓋板	Cover Plate	0	1	
J6025-0A	邊蓋板	Cover Plate	1	0	
J6026-0A	邊蓋板	Cover Plate	0	1	
J6030-0A	釜蓋	Post Cap Assy.	1	0	
J6030-1A	釜蓋	Post Cap Assy.	0	1	
J6031-0A	護蓋	Post Cap	1	0	
J6032-0A	護蓋	Post Cap	0	1	
J6033-0A	活動板	Hinge	1	1	
J6034-0A	固定銷	Pin	1	1	
J6035-0A	彈簧板	Spring	1	1	
J6036-0A	平墊圈	Washer	4	4	
J6160-0A	調整銷	Eccentric Stud	1	1	
ZMA05002	螺絲	Screw (M5×0.8×4.5)	3	3	
ZMB03003	螺絲	Screw (M3×0.5×4.7)	3	3	
ZMB04010	螺絲	Screw (M4×0.7×6)	2	0	
ZMC03001	螺絲	Screw (M3×0.5×8.5)	4	4	
ZMJ06002	螺絲	Screw (M6×1×15)	4	4	

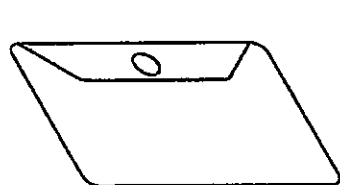
S. CS-8810H、CS-8820H 右邊邊座機構 RIGHT SIDE BRACKET MECHANISM



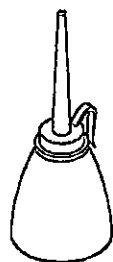
S. CS-8810H. CS-8820H 右邊座機構 RIGHT SIDE BRACKET MECHANISM

零件號碼	零件名稱	Name of Part	件數	Q, TY	零件號碼	零件名稱	Name of Part	件數	Q, TY
Part No			8810	8820	Part No			8810	8820
BB-694ZZ	滾珠軸承	Ball Bearing	1	1	WA089006	平墊圈	Washer	1	1
BN081110	針狀軸承	Needle Bearing	1	1	WA089007	平墊圈	Washer	1	1
BN081113	針狀軸承	Needle Bearing	1	1	WA089008	平墊圈	Washer	1	1
BTM02001	止推軸承	Thrust Bearing	1	1	WA089009	平墊圈	Washer	1	1
J4014-0A	定環	Collar	1	1	WA089013	平墊圈	Washer	1	1
J4025-0A	齒輪(小)	Bevel Gear (Small)	1	1	WA269001	平墊圈	Washer	1	1
J4026-0A	齒輪(大)	Bevel Gear (Large)	1	1	XB400003	油棉	Felt	1	1
J6011-0A	釜軸套管	Bushing	1	1	ZMA06002	螺絲	Screw(M6×0.75×4.5)	4	4
J6012-0A	釜軸套管	Bushing	1	1	ZMA06003	螺絲	Screw(M6×0.75×7)	2	2
J6013-0A	釜軸套管	Bushing	1	1	ZMA06004	螺絲	Screw(M6×0.75×25)	1	1
J6014-0A	定環	Collar	1	1	ZMB03004	螺絲	Screw(M3×0.5×5.7)	4	2
J6015-1A	牛角座	Rotating Hook Opener Bracket	1	1	ZMB04016	螺絲	Screw(M4×0.7×10)	1	1
J6016-0A	牛角	Rotating Hook Opener	1	1	ZMC05002	螺絲	Screw(M5×0.8×20)	1	1
J6018-0B	牛角固定座	Driver (For Bearing)	1	1	ZMH06001	螺絲	Screw(M6×0.75×4)	2	2
J6105-0A	梭殼	Bobbin Case	1	1	ZMH06006	螺絲	Screw(M6×0.75×6)	2	2
J6151-0A	釜軸	Hook Shaft	1	1					
J6153-0A	釜軸中套	Feed Wheel Shaft	1	1					
J7006-0A	梭心	Bobbin	1	1					
RA200260	C形扣環	Retaining Ring	1	1					
T6100-0A	梭頭	Hook	1	1					
T6150-0A	梭軸頭	Hook Driver	1	1					

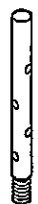
T. CS-8810H·CS-8820H 附件 ACCESSORIES



A7000-0A



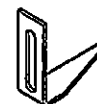
A7012-1A



B1050-0A



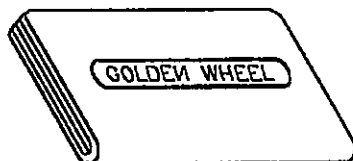
J7026-0A



T1173-0A



ZMB04009



A7001-0A



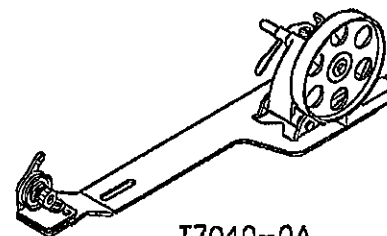
J7006-0A



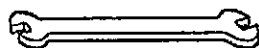
ZML06001



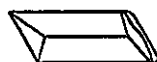
A7011-0A



T7040-0A



TRB04×05



INDP×17#25



WA059003



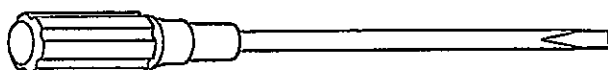
A7010-1A



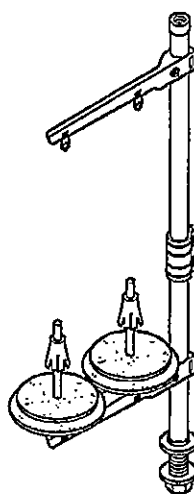
A7010-0A



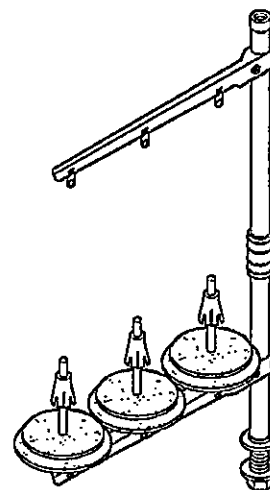
ZMT05001



A7010-2A



J7050-0A(8810H)



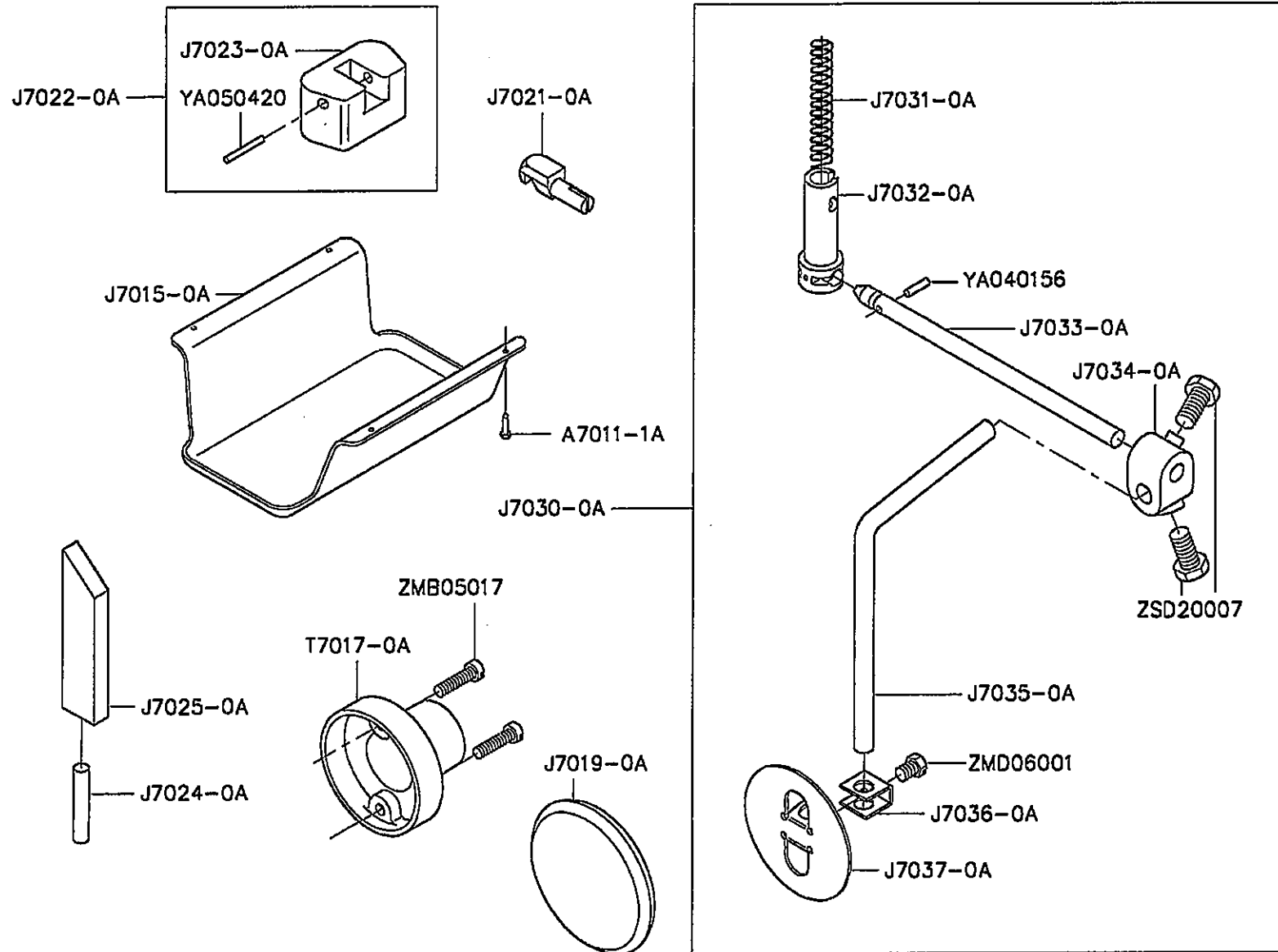
J7050-1A(8820H)

T. CS-8810H. CS-8820H 附件 ACCESSORIES

零件號碼 Part No	零件名稱	Name of Part	件數 8810	Q, TY 8820	備註 Remarks
A7000-0A	工具袋	Accessory Box	1	1	
A7001-0A	車頭蓋	Vinyl Cover	1	1	
A7010-0A	螺絲起子(小)	Screw Driver (Small)	1	1	
A7010-1A	螺絲起子(中)	Screw Driver (Middle)	1	1	
A7010-2A	螺絲起子(大)	Screw Driver (Large)	1	1	
A7011-0A	鐵釘	Nail	10	10	
A7012-1A	油壺(中)	Oilier	1	1	
B1050-0A	線柱	Spool Pin	1	1	
INDP×17#25	針	Needle	4	4	
J7006-0A	梭心	Bobbin	4	4	
J7026-0A	橡膠墊	Head Cushion	2	2	
J7050-0A	2 P 線架	Thread Stand	1	0	
J7050-1A	3 P 線架	Thread Stand	0	1	
T1173-0A	縫目指示板	Stitching Length Indicator	1	1	
T7040-0A	捲線器組	Bobbin Winder	1	1	
TRB04×05	開口板手	Spanner (4*5)	1	1	
WA059003	墊圈	Washer	2	2	
ZNB04009	螺絲	Screw (M4x0.7x6)	2	2	
ZML06001	螺母	Nut (M6×1×4.8)	1	1	
ZMT05001	螺絲	Screw (4.5×20)	2	2	



T. CS-8810H·CS-8820H 附件 ACCESSORIES



T. CS-8810H. CS-8820H 附件 ACCESSORIES

零件號碼 Part No	零件名稱	Name of Part	件數 8810	Q, TY 8820	備註 Remarks
A7011-1A	鐵釘	Nail	6	6	
J7015-0A	下油槽	Oil Reservoir	1	1	
J7019-0A	海棉墊	Knee Guard	1	1	
J7021-0A	後鈕鉤	Hinge Pin	2	2	
J7022-0A	後鈕座組	Hinge Connection Seat Assy.	2	2	
J7023-0A	後鈕座	Hinge Connection Seat	2	2	
J7024-0A	固定銷	Housing Support Stud	1	1	
J7025-0A	枕木	Head Rest Wood	1	1	
J7030-0A	腳弓組	Knee Lifter Assy.	1	1	
J7031-0A	彈簧	Spring	1	1	
J7032-0A	腳壓連桿頭	Knee Lever Coupling	1	1	
J7033-0A	腳壓直桿	Knee Lever Rod	1	1	
J7034-0A	連接器	Clamp	1	1	
J7035-0A	腳壓曲桿	Knee Lever Rod	1	1	
J7036-0A	固定支桿	Retainer	1	1	
J7037-0A	腳弓大餅	Knee Plate	1	1	
T7017-0A	皮帶蓋(小)	Belt Cover Set (Small)	1	1	
YA040156	銷	Pin	1	1	
YA050420	銷	Pin	2	2	
ZMB05017	螺絲	Screw (M5x0.8x20)	2	2	
ZMD06001	螺絲	Screw (M6x1.1x7)	1	1	
ZSD20007	螺絲	Screw (5/16-18x16)	2	2	

U. CS-8810H、8820H 零件號碼與頁數對照 NUMERICAL PARTS-LIST

零件號碼 PARTS NO.	頁數 PAGE	零件號碼 PARTS NO.	頁數 PAGE	零件號碼 PARTS NO.	頁數 PAGE	零件號碼 PARTS NO.	頁數 PAGE	零件號碼 PARTS NO.	頁數 PAGE
A1024-1A	4	BB-694ZZ	36, 44	J1067-0A	10	J1219-0A	20	J1486-0A	16
A1026-1A	4	BN061014	6, 40	J1068-0A	10	J1223-0A	20	J1500-0A	6
A1027-1A	4	BN071008	10	J1069-0A	10	J1270-0A	20	J1501-0A	6
A1028-1A	4	BN081110	14, 16, 24	J1073-0A	18	J1300-2A	20	J1510-0A	8
A1028-2A	4	BN081110	36, 44	J1074-0A	10	J1301-0A	20	J1510-1A	8
A1030-0A	4	BN081113	36, 44	J1075-0A	16	J1305-0A	20	J1510-3A	8
A1031-0A	4	BN141710	36	J1077-0A	2, 30, 34	J1306-0A	20	J1511-0C	8
A1032-0A	4	BN151917	14, 18, 26	J1079-0A	16	J1335-0A	18	J1511-1C	8
A1033-0A	4	BN242810	14	J1081-0A	18	J1340-0A	18	J1511-3C	8
A1034-0A	4	BNFJ-1010W	10	J1082-0A	18	J1341-0A	14, 18, 26	J1512-0A	8, 32
A1035-0A	4	BTM02001	36, 44	J1090-0A	18	J1341-1A	18	J1513-0A	8
A1036-0A	4	BWGE4E01	6, 40	J1092-0A	18	J1342-0A	18	J1514-0A	8
A1038-0A	4	BWGE4E03	6, 40	J1093-0A	18	J1342-1A	18	J1514-1A	8
A1055-0A	2	BWGE4E04	6	J1097-0A	12	J1343-0A	14, 18, 26	J1515-0A	8
A1076-0A	16	BW-GE-8E	6	J1098-0A	12	J1343-1A	18	J1515-1A	8
A7000-0A	46	EJ1021-0A	4	J1099-0A	12	J1344-0A	14, 18	J3010-0A	22
A7001-0A	46	I0216-0A	12	J1100-0A	12	J1345-0A	14, 18, 26	J3030-0A	22
A7010-0A	46	INDPx17#25	16, 46	J1103-0B	12	J1420-0A	14	J4010-0A	28
A7010-1A	46	J1011-0A	20	J1106-0A	12	J1424-0A	26	J4011-0B	30, 34, 42
A7010-2A	46	J1026-0A	4	J1181-0A	20	J1425-0A	14	J4014-0A	36, 44
A7011-0A	46	J1026-3A	4	J1183-0A	20	J1426-0C	16	J4017-0B	24
A7011-1A	48	J1041-0A	2	J1185-0A	20	J1427-0B	14, 16	J4022-0A	40
A7012-1A	46	J1051-0A	2	J1200-0A	20	J1428-0A	14	J4025-0A	36, 44
AB1425-0A	14	J1052-0A	2	J1205-0A	20	J1430-0A	14, 26	J4026-0A	36, 44
B1027-0A	4	J1060-0A	10	J1206-0A	20	J1431-0A	14, 26	J4040-0A	26
B1050-0A	46	J1061-0A	10	J1211-0A	20	J1480-0A	16	J4042-0A	26
BB-608ZZ	40	J1063-0A	2	J1212-0A	20	J1481-0A	16	J4043-0A	26
BB6203ZZNR	22	J1064-0A	10	J1213-0C	8	J1482-0A	16	J4045-0A	26
BB6204ZZNR	12	J1065-0A	10	J1213-1C	8	J1483-0A	16	J4046-0A	26
BB-624ZZ	10	J1065-1A	10	J1213-3C	8	J1484-0A	16	J4047-0B	16, 24
BB-688ZZ	8, 10	J1066-0A	10	J1218-0A	20	J1485-0A	16	J4280-0A	24

U. CS-8810H、8820H 零件號碼與頁數對照 NUMERICAL PARTS-LIST

零件號碼 PARTS NO.	頁數 PAGE	零件號碼 PARTS NO.	頁數 PAGE	零件號碼 PARTS NO.	頁數 PAGE	零件號碼 PARTS NO.	頁數 PAGE	零件號碼 PARTS NO.	頁數 PAGE
J4281-0A	24	J6013-0A	36, 44	J6169-0A	30	J7033-0A	48	T1070-1A	16
J4282-0A	24	J6014-0A	44	J6170-0A	32	J7034-0A	48	T1090-0A	18
J4283-0A	24	J6015-1A	36, 44	J6172-0A	32	J7035-0A	48	T1173-0A	46
J4284-0A	24	J6016-0A	36, 44	J6173-0A	32	J7036-0A	48	T1180-0A	20
J4285-0A	24	J6018-0B	36, 44	J6174-0A	32	J7037-0A	48	T1320-0A	12, 22
J4286-0A	24	J6021-0A	30	J6175-0A	32	J7050-0A	46	T1322-0A	12
J4287-0A	24	J6022-0A	42	J6176-0A	32	J7050-1A	46	T1505-0A	6
J4320-0A	28	J6023-0A	34, 42	J6177-0A	32	OBM00020	8, 32	T3022-0A	22
J4321-0B	22	J6024-0A	30	J6178-0A	32	RA200160	6, 8	T3030-0A	2
J4323-0B	22	J6025-0A	42	J6179-0A	32	RA200220	40	T4130-0A	22
J4330-0A	28	J6026-0A	34, 42	J6180-0A	32	RA200260	44	T4300-0A	24
J4331-0A	28	J6030-0A	42	J6183-0A	32	RB200120	16	T4301-0A	24
J4332-0A	28	J6030-1A	34, 42	J6185-0A	32	RB200150	26	T4371-0A	24
J4333-0A	28	J6031-0A	42	J6186-0A	32	RB200170	22	T4377-0A	24
J4334-0A	28	J6032-0A	34, 42	J6190-0A	40	RB200240	14	T4378-0A	24
J4335-0A	28	J6033-0A	34, 42	J6191-0A	40	RB300080	8	T6050-0A	30
J4336-0A	28	J6034-0A	34, 42	J6193-0A	40	RB300120	28	T6050-1A	34
J4337-0A	28	J6035-0A	34, 42	J6195-0A	40	RB500080	10	T6100-0A	36, 44
J4338-0A	28	J6036-0A	30, 34, 42	J7006-0A	36, 44	RC100085	8	T6150-0A	36, 44
J4339-0A	28	J6051-0B	34	J7006-0A	46	RE000030	28	T7017-0A	48
J4340-0A	28	J6052-0B	34	J7015-0A	48	RE000040	16	T7040-0A	46
J4341-0A	28	J6105-0A	36, 44	J7019-0A	48	RE000040	28	TRB04x05	46
J4360-0A	2	J6150-0A	36	J7021-0A	48	RE000070	24	WA029002	8
J4365-0A	2	J6151-0A	36, 44	J7022-0A	48	RE000080	6	WA029003	8
J6000-0A	34	J6152-0A	36	J7023-0A	48	T1010-0A	2	WA029004	8
J6001-0A	30	J6153-0A	44	J7024-0A	48	T1012-0A	2	WA059003	46
J6001-1A	34	J6154-0A	36	J7025-0A	48	T1020-2A	4	WA059010	30
J6002-0A	42	J6159-0B	36	J7026-0A	46	T1020-3A	4	WA089005	10
J6002-1A	42	J6160-0A	34, 42	J7030-0A	48	T1037-0A	4	WA089006	36, 44
J6011-0A	36, 44	J6165-0A	36	J7031-0A	48	T1043-0B	4	WA089007	36, 44
J6012-0A	36, 44	J6166-0A	36	J7032-0A	48	T1070-0A	16	WA089008	36, 44

U. CS-8810H、8820H 零件號碼與頁數對照 NUMERICAL PARTS-LIST

零件號碼 PARTS NO.	頁數 PAGE	零件號碼 PARTS NO.	頁數 PAGE	零件號碼 PARTS NO.	頁數 PAGE	零件號碼 PARTS NO.	頁數 PAGE	零件號碼 PARTS NO.	頁數 PAGE
WA089009	36, 44	ZMA06003	12, 20, 38	ZMB06004	30	ZMH06008	12		
WA089013	36, 44	ZMA06003	44	ZMB06007	6, 14	ZMH06010	24		
WA089015	8	ZMA06004	38, 44	ZMB07001	12	ZMJ04001	24		
WA099002	6	ZMA06005	16	ZMC02505	8, 32	ZMJ05002	12, 26, 30		
WA099003	6	ZMA07001	12	ZMC03001	30, 34, 42	ZMJ05008	14		
WA099004	6	ZMB03002	16	ZMC04001	30, 34	ZMJ05010	2		
WA099005	6	ZMB03003	34, 42	ZMC05001	2	ZMJ05017	2		
WA129001	16	ZMB03004	38, 44	ZMC05002	38, 44	ZMJ06001	16		
WA149002	36	ZMB04005	40	ZMC06001	12	ZMJ06002	30, 34, 42		
WA149005	36	ZMB04006	18	ZMC06002	12	ZMJ06011	2, 40		
WA159001	14, 26	ZMB04009	20	ZMD04001	20	ZMK05002	24		
WA269001	36, 44	ZMB04010	42	ZMD04002	10	ZMK06002	20		
WB041002	34	ZMB04011	2, 4, 34	ZMD05010	10	ZMK08003	20		
XB110002	18	ZMB04012	16	ZMD06001	48	ZML04001	40		
XB116002	6, 40	ZMB04013	40	ZMG02502	8	ZML05002	24		
XB314001	18	ZMB04014	40	ZMG06004	20	ZML06001	16, 46		
XB400002	18	ZMB04015	6, 40	ZMG06005	24	ZMN06001	4		
XB400003	38, 44	ZMB04016	14, 26, 38	ZMH03001	32	ZMT05001	46		
YA015060	28	ZMB04016	44	ZMH04001	2	ZNB04009	46		
YA025117	8	ZMB04017	2	ZMH04005	32	ZSB06001	4		
YA040156	48	ZMB04021	34	ZMH05001	28	ZSB06003	4		
YA050168	16	ZMB04022	4	ZMH05002	20	ZSB08008	16		
YA050420	48	ZMB04029	18	ZMH05003	10	ZSB08025	16		
YB040025	18	ZMB04035	8, 20	ZMH05006	32	ZSB09037	24		
ZMA02501	8, 32	ZMB05002	18	ZMH06001	38, 44	ZSB11040	24		
ZMA04003	30	ZMB05003	2, 20	ZMH06002	12, 22, 28	ZSD20007	48		
ZMA05002	22, 30, 32	ZMB05004	2, 26	ZMH06003	20	ZSG09004	4		
ZMA05002	34, 42	ZMB05005	14, 18	ZMH06004	12, 22	ZSG09005	4		
ZMA06001	38	ZMB05006	16	ZMH06005	18	ZSL09001	4		
ZMA06002	26, 32, 38	ZMB05017	48	ZMH06006	28, 38, 44	ZSL09002	24		
ZMA06002	44	ZMB06003	18	ZMH06007	14, 18, 26	ZSN16002	4		

# CS-8810H/8820H 全罩式皮帶蓋裝配圖

