

NO : 590001

# 金輪牌工業用縫紉機

GOLDEN WHEEL INDUSTRIAL SEWING MACHINE

## 零件分解圖

PARTS BOOK

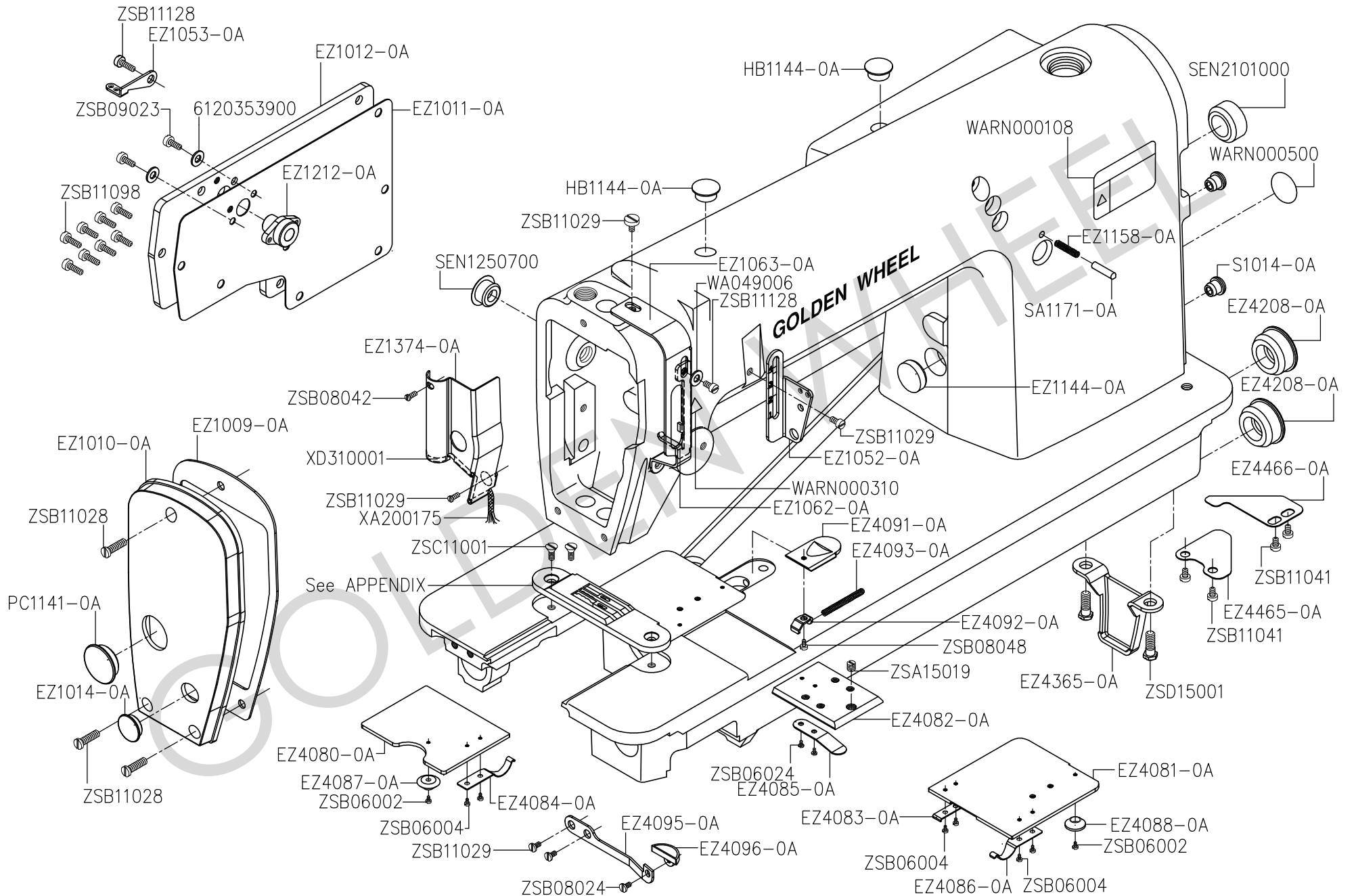
MODEL : CS-5900/5920

啓翔股份有限公司  
*CHEE SIANG INDUSTRIAL CO., LTD.*

# MODEL : CS-5900/5920

索 引	INDEX	PAGE
A、 車頭外觀零件 -----	MACHINE FRAME & MISCELLANEOUS COVER COMPONENTS -----	2-3
B、 上軸-針棒機構 -----	MAIN SHAFT & NEEDLE BAR COMPONENTS -----	4-5
C、 押棒-立軸-下軸機構 -----	PRESSER BAR UPRIGHT SHAFT & LOWER SHAFT COMPONENTS -----	6-7
D、 送料機構(一) -----	FEED MECHANISM COMPONENTS(1) -----	8-9
E、 送料機構(二) -----	FEED MECHANISM COMPONENTS(2) -----	10-11
F、 勾針與針擋機構 -----	LOOPER & NEEDLE GUARD COMPONENTS -----	12-13
G、 縫線張力調整機構 -----	THREAD TENSION CONTROLLER COMPONENTS -----	14-15
H、 給油機構 -----	OIL LUBRICATION MECHANISM COMPONENTS -----	16-17
I、 油槽機構 -----	OIL RESERVOIR & KNEE LIFTER COMPONENTS -----	18-19
J、 附件 -----	ACCESSORIES -----	20-21
K、 附錄 -----	APPENDIX -----	22
L、 零件號碼與頁數對照表 -----	NUMERICAL PARTS-LIST -----	23-25

# A. CS-5900 車頭外部機構 MACHINE FRAME & MISCELLANEOUS COVER COMPONENTS



## A、車頭外部機構 MACHINE FRAME & MISCELLANEOUS COVER COMPONENTS

零件號碼	零件名稱	Name of Part	件數	零件號碼	零件名稱	Name of Part	件數
6120353900	墊片	GASKET	2	EZ4465-0A	擋油板	BED OIL SHIELD	1
EZ1009-0A	面板墊片	FACE PLATE GASKET	1	EZ4466-0A	擋油板	BED OIL SHIELD	1
EZ1010-0A	面板蓋	FACE PLATE	1	HB1144-0A	孔塞	BUBBER PLUG	2
EZ1011-0A	後蓋板墊片	GASKET	1	PC1141-0A	孔塞	BUBBER PLUG	1
EZ1012-0A	後蓋板	SIDE PLATE	1	S1014-0A	孔塞	BUBBER PLUG	1
EZ1014-0A	孔塞	ARM OIL PLUG	1	SA1171-0A	銷	PIN	2
EZ1052-0A	線掛	THREAD GUIDE	1	SEN1250700	孔塞	BUBBER PLUG	1
EZ1053-0A	線掛	THREAD GUIDE	1	SEN2101000	孔塞	BUBBER PLUG	1
EZ1062-0A	線掛	THREAD GUIDE	1	WA049006	平墊圈	WASHER	1
EZ1063-0A	天秤蓋	THREAD TAKE-UP LEVER GUARD	1	WARN000108	警示貼紙	SAFETY LABEL	1
EZ1144-0A	孔塞	BUBBER PLUG	1	WARN000310	警示貼紙	SAFETY LABEL	1
EZ1158-0A	壓縮彈簧	FEED REGULATOR PIN SPRING	1	WARN000500	警示貼紙	SAFETY LABEL	1
EZ1212-0A	鬆線軸襯套組	TENSION RELEASE SHAFT BUSHING	1	XA200175	油線	OIL PAD WICK	1
EZ1374-0A	油棉固定板	ARM OIL SHIELD	1	XD310001	油棉	NON-WOVEN FABRIC	1
EZ4080-0A	角板	CAM COVER	1	ZSA15019	螺絲	SCREW 15/64-28x3.5	1
EZ4081-0A	角板	CAM COVER	1	ZSB06002	螺絲	SCREW 3/32-56x2.5	1
EZ4082-0A	定規固定板	ATTACHMENT INSTALLINF PLATE	1	ZSB06004	螺絲	SCREW 3/32-56x1.9	6
EZ4083-0A	勾板	CAM COVER SUPPORT	1	ZSB06024	螺絲	SCREW 3/32-56x2.0	2
EZ4084-0A	板彈簧	SPRING	1	ZSB08024	螺絲	SCREW 1/8-44x4	2
EZ4085-0A	彈簧板	SPRING	1	ZSB08042	螺絲	SCREW 1/8-44x2.5	1
EZ4086-0A	板彈簧	SPRING	1	ZSB08048	螺絲	SCREW 1/8-44x2.5	1
EZ4087-0A	角板卡頭	BED SLIDE GUIDE	1	ZSB09023	螺絲	SCREW 9/64-40x6	2
EZ4088-0A	角板卡頭	CAM COVER GUIDE	1	ZSB11028	螺絲	SCREW 11/64-40x4	3
EZ4091-0A	蓋板門	CAM COVER LATCH	1	ZSB11029	螺絲	SCREW 11/64-40x7	6
EZ4092-0A	蓋板門擋片	SPRING SUSPENSION	1	ZSB11041	螺絲	SCREW 11/64-40x5	4
EZ4093-0A	壓縮彈簧	SPRING	1	ZSB11098	螺絲	SCREW 11/64-40c8	8
EZ4095-0A	蓋板門彈片	BED SLIDE STOPPER	1	ZSB11128	螺絲	SCREW 11/64-40x5	2
EZ4096-0A	蓋板門	LATCH	1	ZSC11001	螺絲	SCREW 11/64-40x8.5	2
EZ4208-0A	孔塞	BUBBER PLUG	3	ZSD15001	螺絲	SCREW 15/64-28x14	2
EZ4365-0A	腳架	BED SUPPORT PLATE	1				



## B、上軸-針棒機構 MAIN SHAFT & NEEDLE BAR COMPONENTS

零件號碼	零件名稱	Name of Part	件數	零件號碼	零件名稱	Name of Part	件數
5100140400	針棒套管(上)	NEEDLE BAR BUSHING, UPPER	1	WA150008	平墊圈	WASHER	2
5100141000	針棒導引滑塊	SLIDE BLOCK	1	XB107002	油棉	ROLLER FELT	1
5100141400	油蓋	CAP	1	ZSA11009	螺絲	SCREW 11/64-40x2.8	2
5100354200	油量調整銷	OLD AMOUNT ADJUSTING PIN ASM	1	ZSA15010	螺絲	SCREW 15/64-28x15	2
5100354300	油量調整橡膠	OIL ADJUSTING RUBBER	1	ZSA15028	螺絲	SCREW 15/64-28x7	2
BN081208	軸承	NEEDLE BEARING	1	ZSA16014	螺絲	SCREW 1/4-40x8	4
BN14718795	軸承	NEEDLE BEARING	2	ZSA18002	螺絲	SCREW 9/32-28x13.5	1
EZ1047-0A	壓線板	THREAD TENSION REGULATING PLAT	1	ZSB09014	螺絲	SCREW 9/64-40x6	3
EZ1054-0A	收線器支架	THREAD TAKE-UP LEVER ASM.	1	ZSB09051	螺絲	SCREW 9/64-40x12	1
EZ1055-0A	天秤	THREAD TAKE-UP	1	ZSB15038	螺絲	SCREW 15/64 28x11	1
EZ1059-0A	壓縮彈簧	TENSION SPRING	1	ZSB18011	螺絲	SCREW 9/32-28x16	1
EZ1066-0A	曲柄軸	CRANK	1	ZSK06003	螺絲	SCREW 3/32-56x2.2	1
EZ1067-0A	針棒連桿	NEEDLE BAR CRANK ROD	1	ZSK09005	螺絲	SCREW 9/64-40x6	1
EZ1070-0A	針棒	NEEDLE BAR	1				
EZ1073-0A	線掛	NEEDLE BAR THREAD GUIDE	1				
EZ1074-0A	針棒連結桿	NEEDLE BAR CONNECTION	1				
EZ1078-0A	線掛	NEEDLE BAR THREAD GUIDE	1				
EZ1100-0A	上軸	MAIN SHAFT	1				
EZ1100-1A	油孔塞	BUBBER PLUG	1				
EZ1101-0A	上軸套管(前)	BUSHING, FRONT	1				
EZ1102-0A	上軸套管(中)	BUSHING, INTERMEDIATE	1				
EZ1103-0A	上軸套管(後)	MAIN SHAFT BUSHING, REAR	1				
EZ1104-0A	軸環	THRUST COLLAR	2				
EZ1105-0A	手輪	HAND WHEEL	1				
EZ1106-1A	凸輪	COUNTERWEIGHT	1				
INTVX7#14	針	NEEDLE	2				
OASC142607	油封	OIL SEAL	1				
OPP0029178	墊圈	RUBBER RING	1				
OPP0044240	墊圈	RUBBER RING	1				
RA200210	扣環	SNAP RING	2				

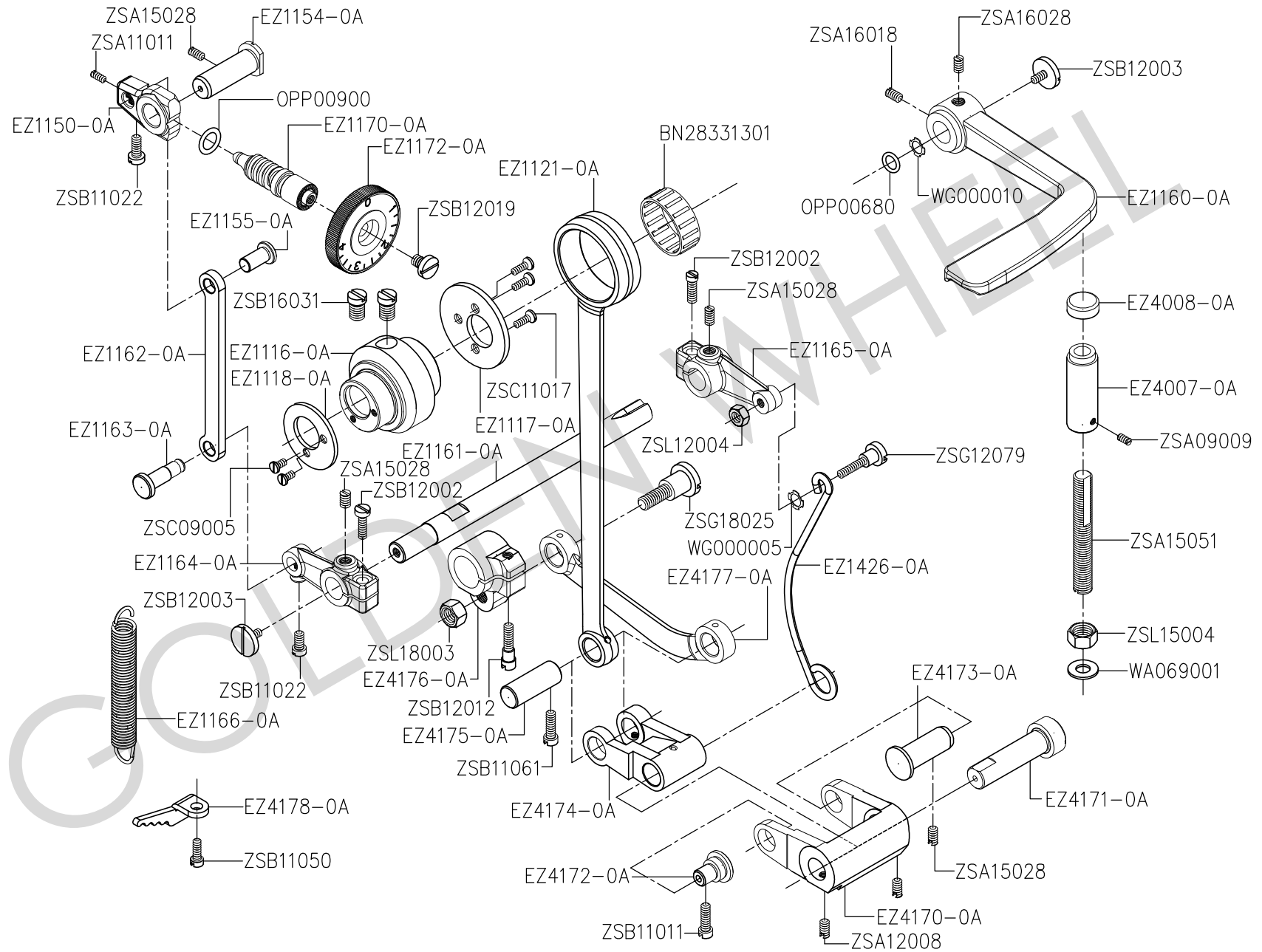


C、押元棒-立軸-下軸機構 PRESSER BAR UPRIGHT SHAFT & LOWER SHAFT COMPONENTS

零件號碼	零件名稱	Name of Part	件數	零件號碼	零件名稱	Name of Part	件數
5100133000	上傘齒輪(大) ---	BEVEL GEAR(LARGE) -----	1	OPP00400	墊圈 -----	BUBBER RING -----	1
5100133100	豎傘齒輪(小) ---	BEVEL GEAR(SMALL) -----	2	RE000050	扣環 -----	RETAINING RING -----	1
5100150200	壓棒套管 -----	PRESSER BAR BUSHING, LOWER	1	RE000060	扣環 -----	RETAINING RING -----	1
5100150300	調整螺絲 -----	PRESSER SPRING REGULATOR	1	RE00006A	扣環 -----	RETAINING RING -----	1
5100150400	彈簧 -----	PRESSER SPRING -----	1	SA1300-0A	連接臂 -----	LIFTING LEVER LINK -----	1
5100150800	押腳提桿 -----	HAND LIFTER -----	1	WA079003	平墊圈 -----	WASHER -----	1
5100151500	螺帽 -----	NUT -----	1	WA100003	平墊圈 -----	LIFTING LEVER GASKET -----	1
5100154800	彈簧導桿 -----	PRESSER GUIDE BAR -----	1	XA200140	油線 -----	OIL WICK -----	1
EZ1081-0A	割線刀線掛 -----	THREAD KNIFE GUIDE -----	1	XB106002	油棉 -----	OIL PAD ROLLER -----	1
EZ1082-0A	割線刀 -----	THREAD KNIFE -----	1	ZSA15037	螺絲 -----	SCREW 15/64-28x10.5 -----	5
EZ1110-0A	豎軸 -----	UPRIGHT SHAFT -----	1	ZSA16022	螺絲 -----	SCREW 1/4-40x8 -----	10
EZ1111-0A	豎軸套管(上) ---	BUSHING, UPPER -----	1	ZSA16025	螺絲 -----	SCREW 1/4-40x6 -----	1
EZ1113-0A	豎軸套管(下) ---	UPRIGHT SHAFT BUSHING, LOWER	1	ZSB06007	螺絲 -----	SCREW 3/32-56x2.8 -----	1
EZ1180-0A	壓棒 -----	PRESSER BAR -----	1	ZSE09001	螺絲 -----	SCREW 9/64-40x9.6 -----	1
EZ1185-0A	壓棒定位器 -----	PRESSER BAR GUIDE BRACKET	1	ZSE09002	螺絲 -----	SCREW 9/64-40x10.5 -----	1
EZ1188-0A	抬壓腳臂(右) ---	LIFTING LEVER LINK, RIGHT	1	ZSG11084	螺絲 -----	HINGE SCREW 11/64-40x1.2 --	1
EZ1190-0A	抬壓腳連桿 -----	LIFTING LEVER CONNECTING ROD	1	ZSG12074	螺絲 -----	HINGE SCREW 3/16-32x1.5 --	1
EZ1192-0A	頂銷接頭 -----	SWIVEL -----	1	ZSG12078	螺絲 -----	HINGE SCREW 3/16-32x3.7 --	1
EZ1193-0A	頂銷 -----	CONNECTING ROD, VERTICAL	1	ZSG12088	螺絲 -----	HINGE SCREW 3/16-32x5 -----	1
EZ1202-0A	手動提桿凸輪組 -	HAND LIFTER CAM ASM. -----	1	ZSK12033	螺絲 -----	SCREW 3/16-32x3.7 -----	1
EZ1204-0B	壓腳提桿 -----	LIFTING LEVER -----	1	ZSK24009	螺絲 -----	SCREW 3/8-28x7.7 -----	1
EZ4010-0A	下軸 -----	LOWER SHAFT -----	1	ZSL12002	螺帽 -----	NUT 3/16-32 -----	1
EZ4010-1A	油孔塞 -----	BUBBER PLUG -----	1				
EZ4011-0A	下軸套管(前) ---	BUSHING, FRONT -----	1				
EZ4012-0A	下軸套管(中) ---	BUSHING, INTERMEDIATE --	1				
EZ4013-0A	下軸套管(後) ---	BUSHING, REAR -----	1				
EZ4014-0A	軸環 -----	THRUST COLLAR -----	1				
EZ4015-0A	油封座 -----	LOOPER THREAD GUARD BUSHING	1				
EZ4021-0A	下軸傘齒輪 -----	BEVEL GEAR LOWER -----	1				
OAGM112204	油封 -----	OIL SEAL -----	1				



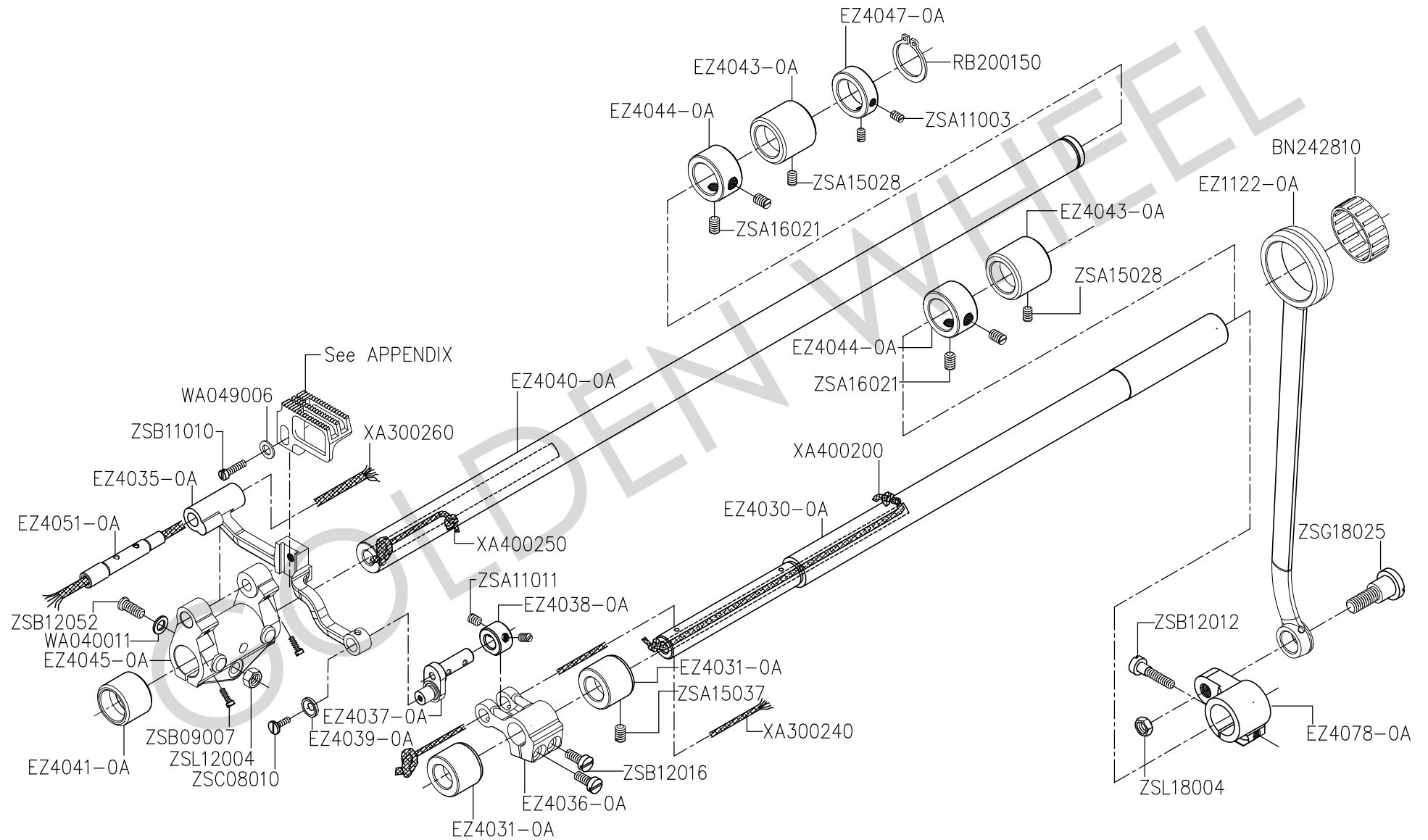
# D. CS-5900 送料機構(一) FEED MECHANISMS (1)



## D、送料機構(一) FEED MECHANISM COMPONENTS(1)

零件號碼	零件名稱	Name of Part	件數	零件號碼	零件名稱	Name of Part	件數
BN28331301	軸承	NEEDLE BEARING	1	OPP00680	墊圈	BUBBER RING	1
EZ1116-0A	送料偏心輪	FEED ECCENTRIC CAM	1	OPP00900	墊圈	BUBBER RING	1
EZ1117-0A	連桿蓋板(右)	ECCENTRIC COVER (RIGHT)	1	WA069001	平墊圈	WASHER	1
EZ1118-0A	連桿蓋板(左)	ECCENTRIC COVER (LEFT)	1	WG000005	平墊圈	WASHER	1
EZ1121-0A	前後送料連桿	FEED ROCKER SHAFT CONNECTING	1	WG000010	平墊圈	WASHER	1
EZ1150-0A	三叉	FEED REGULATOR	1	ZSA09009	螺絲	SCREW 9/64-40x5	1
EZ1154-0A	三叉軸	HINGE PIN	1	ZSA11011	螺絲	SCREW 11/64-40x4.5	1
ZE1155-0A	銷軸	FEED REGULATOR CONNECTING ROD	1	ZSA12008	螺絲	SCREW 3/16-32x6	2
EZ1160-0A	倒縫桿	REVERSE FEED CONTROL LEVER	1	ZSA15028	螺絲	SCREW 15/64-28x7	4
EZ1161-0A	倒縫軸	CONTROL LEVER SHAFT	1	ZSA15051	螺絲	SCREW 15/64-28x60	10
EZ1162-0A	針距調節車桿	FEED REGULATOR CONNECTING ROD	1	ZSA16018	螺絲	SCREW 1/4-28x8	1
EZ1163-0A	銷軸	TENSION SPRING SUSPENSION STUD	1	ZSA16028	螺絲	SCREW 1/4-28x10	1
EZ1164-0A	針距擺臂	CRANK ASM.	1	ZSB11011	螺絲	SCREW 11/64-40x9	1
EZ1165-0A	針距控制臂	CONTROL LEVER CRANK	1	ZSB11022	螺絲	SCREW 11/64-40x8.5	2
EZ1166-0A	拉伸彈簧	TENSION SPRING	1	ZSB11050	螺絲	SCREW 11/64-40x10.5	1
EZ1170-0A	針距調節軸	STITCH LENGTH REGULATING SCREW	1	ZSB11061	螺絲	SCREW 11/64-40x12	1
EZ1172-0A	刻度盤	FEED REGULATOR DIAL	1	ZSB12002	螺絲	SCREW 3/16-28x12	2
EZ1426-0A	連桿	ROCKER ARM CONNECTING ROD	1	ZSB12003	螺絲	SCREW 3/16-31x6.5	2
EZ4007-0A	調整支柱	LEVER STOPPER	1	ZSB12012	螺絲	SCREW 3/16-28x15.5	1
EZ4008-0A	橡膠端蓋	LEVER STOPPER BUBBER CAP	1	ZSB12019	螺絲	SCREW 3/16-28x9	1
EZ4170-0A	送料擺臂	FEED DRIVING ROCKER	1	ZSB16031	螺絲	SCREW 1/4-40x11	2
EZ4171-0A	銷軸	FEED DRIVING ROCKER HINGE PIN	1	ZSC09005	螺絲	SCREW 9/64-40x7	2
EZ4172-0A	銷軸	FEED DRIVING ROCKER HINGE PIN	1	ZSC11017	螺絲	SCREW 11/64-40x8.7	3
EZ4173-0A	銷軸	FEED DRIVING ROCKER ARM HINGE	1	ZSG12079	螺絲	HINGE SCREW 3/16-28x12	1
EZ4174-0A	送料擺臂	FEED DRIVING ROCKER ARM	1	ZSG18025	螺絲	HINGE SCREW 9/32-28x13	1
EZ4175-0A	銷軸	ROCKER ARM CONNECTING PIN	1	ZSL12004	螺帽	NUT 3/16-28	1
EZ4176-0A	針距控制臂	FEED ROCKER SHAFT CRANK ARM	1	ZSL15004	螺帽	NUT 15/64-28	1
EZ4177-0A	送料連桿	CONNECTING ROD	1	ZSL18003	螺帽	NUT 9/32-28	1
EZ4178-0A	彈簧掛勾	SUSPENSION BRACKET	1				

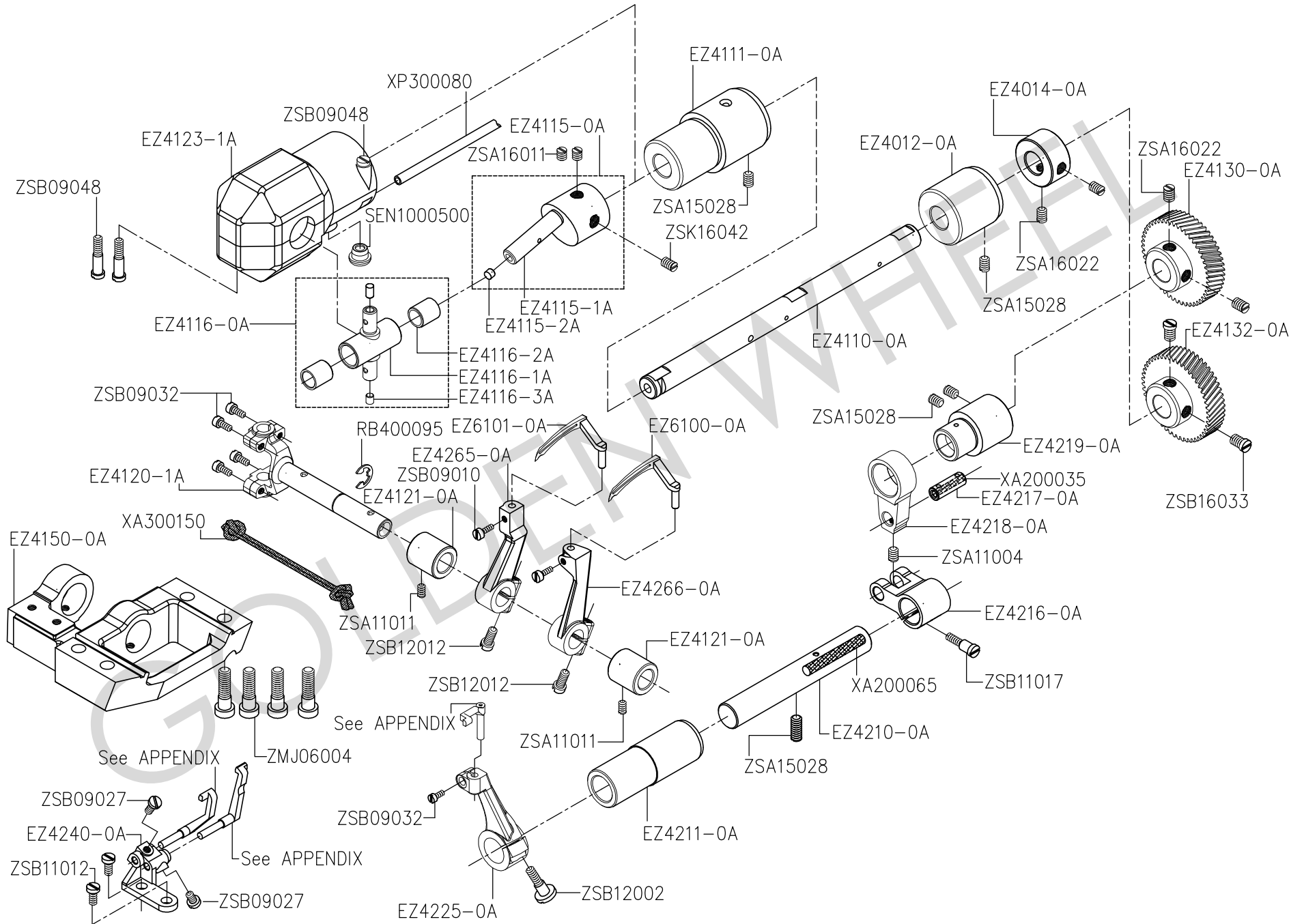
# E. CS-5900 送料機構(二) FEED MECHANISSCP (2)



## E、送料機構(二) FEED MECHANISM COMPONENTS(2)

零件號碼	零件名稱	Name of Part	件數	零件號碼	零件名稱	Name of Part	件數
BN242810	軸承	NEEDLE BEARING	1	ZSB11010	螺絲	SCREW 11/64-40x14	1
EZ1122-0A	上下送料連桿	FEED DRIVING SHAFT CONNECTING	1	ZSB12012	螺絲	SCREW 3/16-28x15.5	1
EZ4030-0A	上下送料軸	FEED DRIVING SHAFT	1	ZSB12016	螺絲	SCREW 3/16-32x12	2
EZ4031-0A	上下送料軸套管(右)	FEED ROCKER SHAFT BUSHING	1	ZSB12052	螺絲	SCREW 3/16-28x18	1
EZ4035-0A	送料齒台	FEED BAR	1	ZSC08010	螺絲	SCREW 1/8-44x5	1
EZ4036-0A	上下送料腕	FEED ROCKER SHAFT CRANK	1	ZSG18025	螺絲	HINGE SCREW 9/32-28x13	1
EZ4037-0A	上下送料連桿	FEED BAR LINK	1	ZSL12004	螺帽	NUT 3/16-28	1
EZ4038-0A	定環	THRUST COLLAR	1	ZSL18004	螺帽	NUT 9/32-28	1
EZ4039-0A	連桿蓋	COUNTER-SUNK WASHER	1				
EZ4040-0A	水平送料軸	FEED ROCKER SHAFT	1				
EZ4041-0A	水平送料軸套(左)	BUSHING, FRONT	1				
EZ4043-0A	水平送料軸套(右)	BUSHING, REAR	1				
EZ4044-0A	軸環	MAIN SHAFT THRUST COLLAR	1				
EZ4045-0A	前後送料腕	FEED ROCKER	1				
EZ4047-0A	軸環	THRUST COLLAR	1				
EZ4051-0A	銷軸	FEED BAR SHAFT	1				
EZ4078-0A	上下控制臂	FEED DRIVING SHAFT CRANK	1				
RB200150	扣環	RING	1				
WA040011	平墊圈	WASHER	1				
WA049006	平墊圈	WASHER	1				
XA300240	油線	OIL WICK	1				
XA300260	油線	OIL WICK	1				
XA400200	油線	OIL WICK	1				
XA400250	油線	OIL WICK	1				
ZSA11003	螺絲	SCREW 11/64-40x3.5	2				
ZSA11011	螺絲	SCREW 11/64-40x5	2				
ZSA15028	螺絲	SCREW 15/64-28x7	2				
ZSA15037	螺絲	SCREW 15/64-28x10.5	2				
ZSA16021	螺絲	SCREW 1/4-40x6	4				
ZSB09007	螺絲	SCREW 9/64-40x7.5	2				

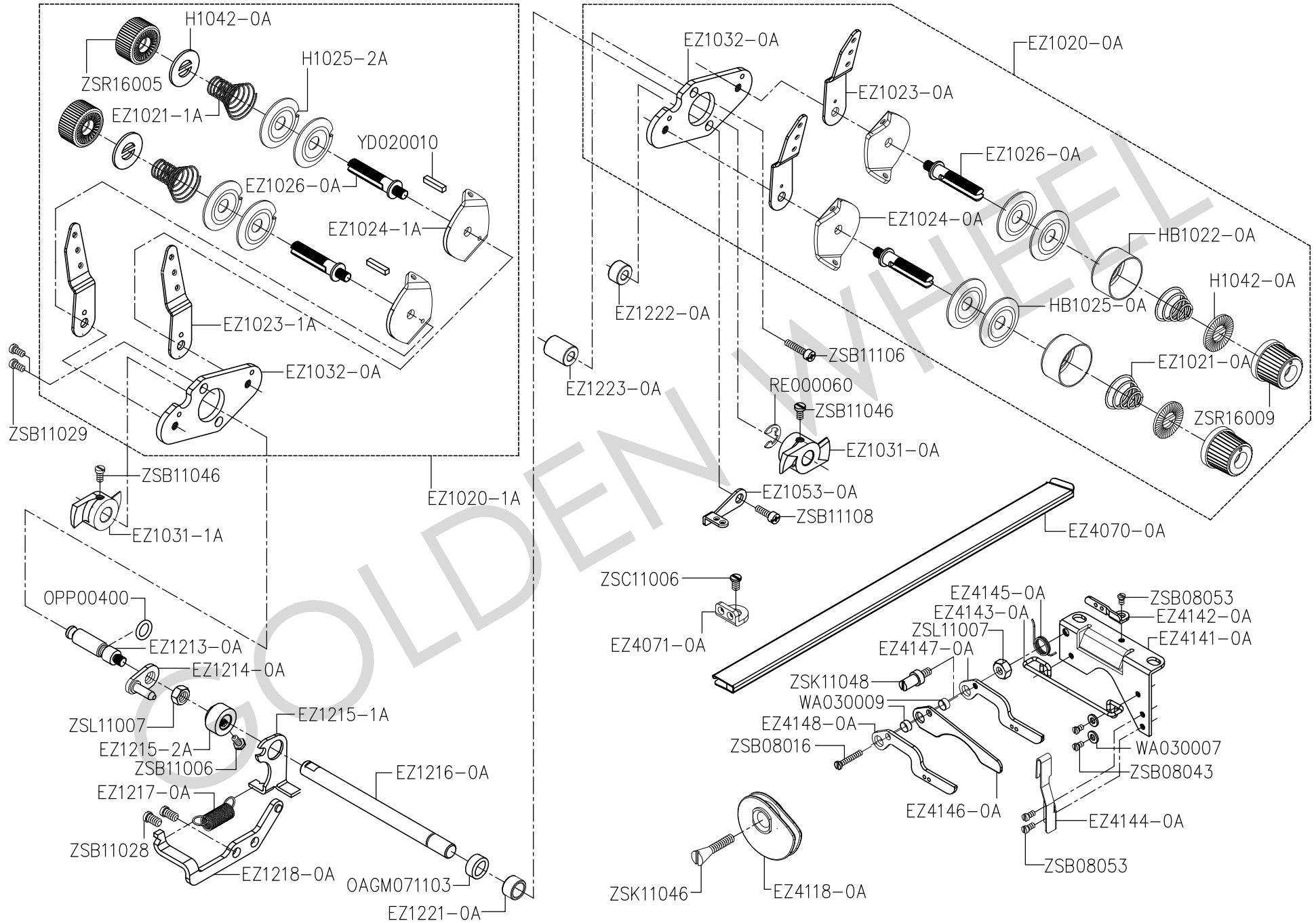
# F. CS-5900 勾針與針擋機構 LOOPER & NEEDLE GUARD COMPONENTS



## F、勾針與針擋機構 LOOPER & NEEDLE GUARD COMPONENTS

零件號碼	零件名稱	Name of Part	件數	零件號碼	零件名稱	Name of Part	件數
EZ4012-0A	下軸套管(中) ---	BUSHING, INTERMEDIATE --	1	SEN1000500	孔塞 -----	RUBBER PLUG -----	1
EZ4014-0A	軸環 -----	THRUST COLLAR -----	1	XA200035	油線 -----	OIL WICK -----	1
EZ4110-0A	勾針齒輪軸 -----	LOOPER CRANK DRIVING SHAFT	1	XA200065	油線 -----	OIL WICK -----	1
EZ4111-0A	勾針軸套管 -----	BUSHING, FRONT -----	1	XA300150	油線 -----	OIL WICK -----	1
EZ4115-0A	勾針曲柄組 -----	LOOPER CRANK ASM. -----	1	XP300080	油棉 -----	OIL TUBE -----	1
EZ4115-1A	勾針曲柄 -----	LOOPER CRANK -----	1	ZMJ06004	螺絲 -----	SCREW M6x20 -----	4
EZ4115-2A	銅塞 -----	PLUG -----	1	ZSA11004	螺絲 -----	SCREW 11/64-40x3.5 -----	1
EZ4116-0A	十字接頭組 -----	TRUNNION ASM. -----	1	ZSA11011	螺絲 -----	SCREW 11/64-40x3.5 -----	2
EZ4116-1A	十字接頭 -----	TRUNNION -----	1	ZSA15028	螺絲 -----	SCREW 15/64-28x7 -----	5
EZ4116-2A	十字接頭襯套 ---	TRUNNION BUSHING ---	1	ZSA16011	螺絲 -----	SCREW 1/4-40x7 -----	2
EZ4116-3A	銅塞 -----	PLUG -----	1	ZSA16022	螺絲 -----	SCREW 1/4-40x7 -----	4
EZ4120-1A	勾針搖桿組 -----	LOOPER ROCKER SHAFT ASM.	1	ZSB09010	螺絲 -----	SCREW 9/64-40x4.5 -----	2
EZ4121-0A	勾針曲套 -----	BUSHING, REAR -----	2	ZSB09027	螺絲 -----	SCREW 9/64-40x4 -----	2
EZ4123-1A	勾針連桿護蓋組 -	LOOPER CRANK COVER ASM. -	1	ZSB09032	螺絲 -----	SCREW 9/64-40x8.5 -----	5
EZ4130-0A	下軸齒輪 -----	GEAR, UPPER -----	1	ZSB09048	螺絲 -----	SCREW 9/64-40x21.2 -----	3
EZ4132-0A	勾針軸齒輪 -----	GEAR, LOWER -----	1	ZSB11012	螺絲 -----	SCREW 11/64-40x8 -----	2
EZ4150-0A	勾針座 -----	LOOPER MOUNTING BASE ---	1	ZSB11017	螺絲 -----	SCREW 11/64-40x12 -----	1
EZ4210-0A	針擋擺動軸 -----	NEEDLE GUARD DRIVING SHAFT	1	ZSB12002	螺絲 -----	SCREW 3/16-28x12 -----	1
EZ4211-0A	針擋軸套管 -----	BUSHING -----	1	ZSB12012	螺絲 -----	SCREW 3/16-28x15.5 -----	3
EZ4216-0A	針擋擺臂 -----	REAR NEEDLE GUARD ROCKER FORK	1	ZSB16033	螺絲 -----	SCREW 1/4-40x6 -----	2
EZ4217-0A	連桿銷 -----	PIN ASM. -----	1	ZSK16042	螺絲 -----	SCREW 1/4-40x6 -----	1
EZ4218-0A	針擋連桿 -----	NEEDLE GUARD CARD ROD ---	1				
EZ4219-0A	針擋偏心輪 -----	NEEDLE GUARD CAM -----	1				
EZ4225-0A	後針擋座 -----	REAR NEEDLE GUARD ROCKER ARM.	1				
EZ4240-0A	前針擋座 -----	NEEDLE GUARD BASE -----	1				
EZ4265-0A	勾針座(右) -----	LOOPER HOLDER ASM. ,RIGHT	1				
EZ4266-0A	勾針座(左) -----	LOOPER HOLDER ASM. ,LEFT	1				
EZ6100-0A	勾針(左) -----	LOOPER (LEFT) -----	1				
EZ6101-0A	勾針(右) -----	LOOP (RIGHT) -----	1				
RB400095	扣環 -----	RETAINING RING -----	1				

# G. CS-5900 縫線張力調整機構 THREAD TENSION CONTROLLER COMPONENTS

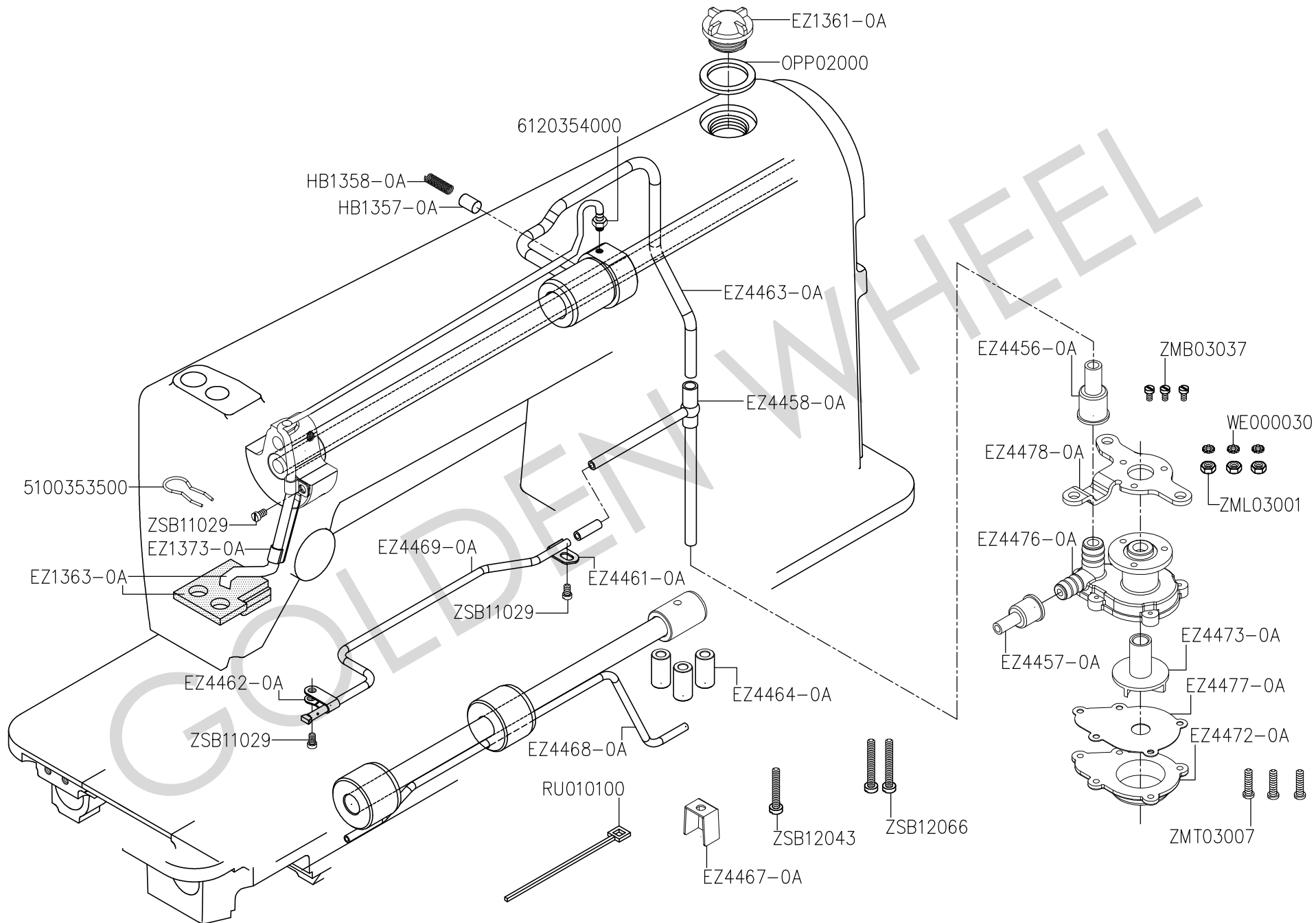


## G、縫線張力調整機構 THREAD TENSION CONTROLLER COMPONENTS

零件號碼	零件名稱	Name of Part	件數	零件號碼	零件名稱	Name of Part	件數
EZ1021-0A	壓縮彈簧	LOOPER THREAD TENSION SPRING	4	EZ4147-0A	過線板(右)	LOOPER THREAD GUIDE, RIGHT	1
EZ1021-1A	壓縮彈簧	LOOPER THREAD TENSION SPRING	2	EZ4148-0A	過線板(左)	LOOPER THREAD GUIDE, LEFT	1
EZ1023-0A	沙拉組線掛	LOOPER THREAD TENSING CONTROL	2	H1025-2A	壓線盤	TENSING DISC	4
EZ1023-1A	沙拉組線掛	LOOPER THREAD TENSING CONTROL	2	H1042-0A	墊圈	ROTATING STOPPER	4
EZ1024-0A	壓線盤線掛	TENSION THREAD GUIDE	2	HB1022-0A	壓迫筒	TENSION DISC PRESSER TUBE	2
EZ1024-1A	壓線盤線掛	TENSION THREAD GUIDE	2	HB1025-0A	壓線盤	TENSING DISC	4
EZ1026-0A	壓線盤螺紋棒	LOPPER THREAD TENSION POST	4	OAGM071103	油封	OIL SEAL RING	1
EZ1031-0A	鬆線器	NEEDLE THREAD RELEASE LATCH	1	OPP00400	墊圈	RUBBER RING	1
EZ1031-1A	鬆線器	LOOPER THREAD RELEASE LATCH	1	RE000060	扣環	RING	1
EZ1032-0A	沙拉組固定板	TENSION INSTALLING PLATE	1	WA030007	平墊圈	WASHER	2
EZ1053-0A	線掛	FRAME THREAD GUIDE	1	WA030009	平墊圈	WASHER	2
EZ1213-0A	底線鬆線軸	LOOPER THREAD RELEASE SHAFT	1	YD020010	銷	PIN	2
EZ1214-0A	鬆線臂組	TENSION RELEASE ARE ASM.	1	ZSB08016	螺絲	SCREW 1/8-44x12	1
EZ1215-1A	鬆線擺臂	TENSION RELEASE ARM	1	ZSB08043	螺絲	SCREW 1/8-44x4	2
EZ1215-2A	鬆線擺臂	TENSION RELEASE ARM	1	ZSB08053	螺絲	SCREW 1/8-44x2.5	3
EZ1216-0A	鬆線軸	TENSION RELEASE SHAFT	1	ZSB11006	螺絲	SCREW 11/64-40x6.5	1
EZ1217-0A	拉伸彈簧	SPRING	1	ZSB11028	螺絲	SCREW 11/64-40x10	2
EZ1218-0A	彈簧支架	SUSPENSION BRACKET	1	ZSB11029	螺絲	SCREW 11/64-40x7	2
EZ1221-0A	鬆線軸墊圈	TENSION RELEASE SHAFT SPACER	1	ZSB11046	螺絲	SCREW 11/64-40x4.8	2
EZ1222-0A	沙拉組墊圈(短)	SPACER(S), FOR INSTALLING PLAT	1	ZSB11106	螺絲	SCREW 11/64-40x25	1
EZ1223-0A	沙拉組墊圈(長)	SPACER(L), FOR INSTALLING PLAT	1	ZSB11108	螺絲	SCREW 11/64-40x16	1
EZ4070-0A	底線過線板	LOOPER THREAD GUIDE TUBE	1	ZSC11006	螺絲	SCREW 11/64-40x7	1
EZ4071-0A	底線線掛	LOOPER THREAD GUIDE	1	ZSK11046	螺絲	SCREW 11/64-40x8	1
EZ4118-0A	收線輪組	LOOPER THREAD TAKE-UP	1	ZSK11048	螺絲	THREAD GUIDE STUD	1
EZ4141-0A	導線板	THREAD GUIDE PLATE	1	ZSL11007	螺帽	NUT 11/64-40	2
EZ4142-0A	線掛	LOOPER THREAD GUIDE	1	ZSR16005	旋鈕	THREAD TENSION NUT	2
EZ4143-0A	線掛	CAST-OFF WIRE	1	ZSR16009	調整螺帽	THREAD TENSION NUT	2
EZ4144-0A	彈簧板	THREAD GUIDE STOPPER SPRING	1				
EZ4145-0A	扭力彈簧	THREAD GUIDE SPRING	2				
EZ4146-0A	過線板(中)	CAST-OFF PLATE	1				



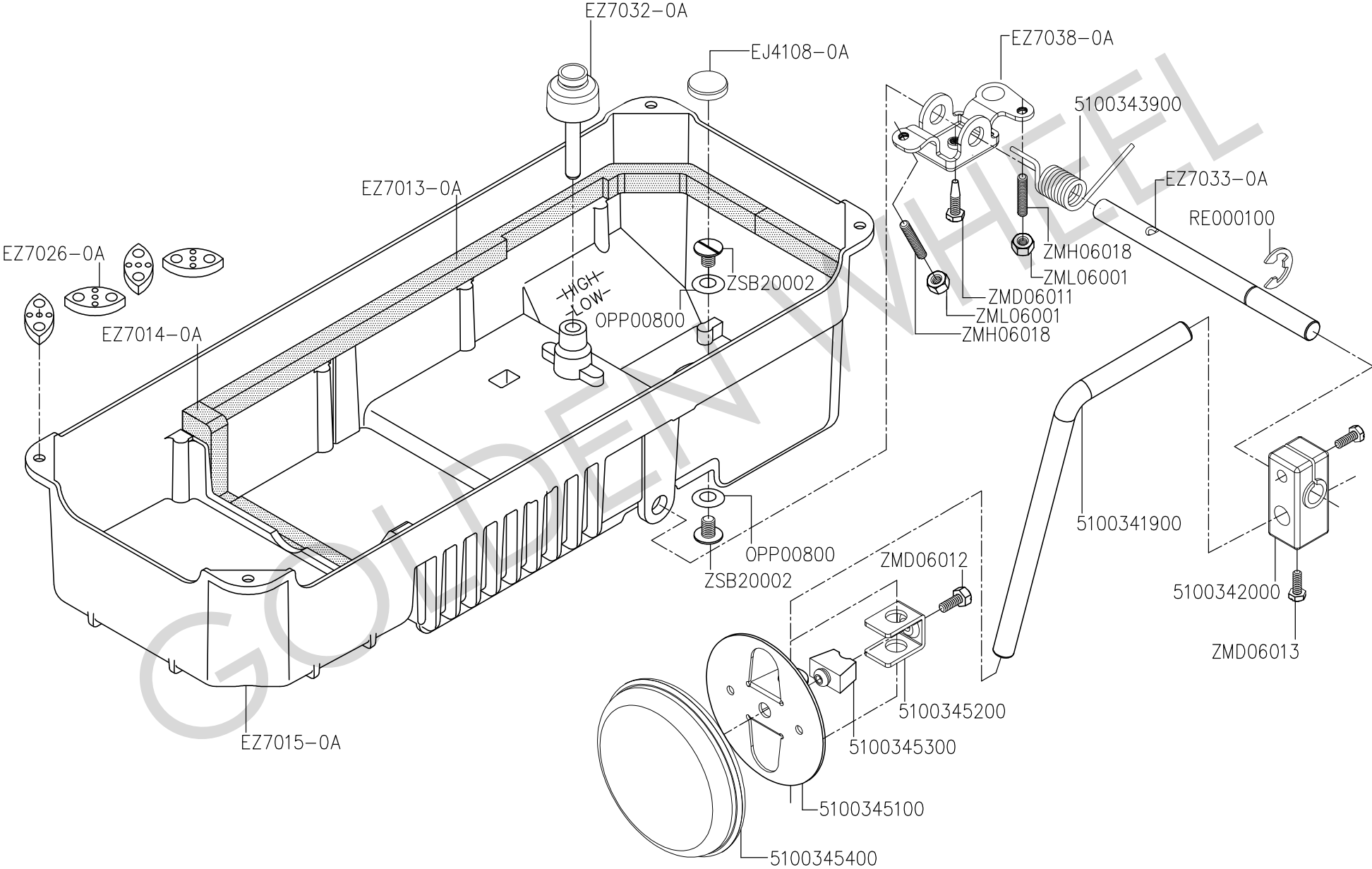
# H. CS-5900 給油機構 OIL LUBRICATION MECHANISM COMPONENTS



## H、給油機構 OIL LUBRICATION MECHANISM COMPONENTS

零件號碼	零件名稱	Name of Part	件數	零件號碼	零件名稱	Name of Part	件數
5100353500	油棉壓板	OIL FELT PRESSER	1	ZSB12066	螺絲	SCREW 3/16-20x30	2
6120354000	油管接頭	CONNECTING SCREW	2				
EZ1361-0A	觀油鏡	OIL SIGHT WINDOW	1				
EZ1363-0A	回油管組	OIL RETURN TUBE ASM.	1				
EZ1373-0A	油管夾	OIL RETURN TUBE PRESSER PLATE	1				
EZ4456-0A	橡膠管接頭	BUBBER JOINT	1				
EZ4457-0A	橡膠管接頭	BUBBER JOINT	1				
EZ4458-0A	三通管	BUBBER JOINT	2				
EZ4461-0A	油管夾	GUIDE	1				
EZ4462-0A	油管夾	HOLDER	1				
EZ4463-0A	鋁管	UPPER SHAFT LUBRICATING PIPE	1				
EZ4464-0A	油泵墊環	OIL PUMP INSTALLING COLLAR	3				
EZ4467-0A	防油罩	OIL GUARD	1				
EZ4468-0A	鋁管	LUBRICATING OIL PIPE	1				
EZ4469-0A	鋁管	GEAR OIL PIPE	1				
EZ4472-0A	油泵蓋	LUBRICATING OIL PUMP COVER	1				
EZ4473-0A	油泵葉輪	OIL PUMP IMPELLER	1				
EZ4476-0A	油泵	LUBRICATING OIL PUMP	1				
EZ4477-0A	輪葉蓋板	OIL PUMP IMPELLER COVER	1				
EZ4478-0A	油泵固定板	OIL PUMP INSTALLING BASE	1				
HB1357-0A	柱塞	PLUNGER	1				
HB1358-0A	壓縮彈簧	PLUNGER SPRING	1				
OPP02000	墊圈	BUBBER RING	1				
RU010100	尼龍繫線帶	CABLE TIE	1				
WE000030	平墊圈	WASHER	3				
ZMB03037	螺絲	SCREW M3x0.5-10	3				
ZML03001	螺帽	NUT M3x0.5	3				
ZMT03007	螺絲	SCREW M3x10	1				
ZSB11029	螺絲	SCREW 11/64-40x7	3				
ZSB12043	螺絲	SCREW 3/16-28x25	1				

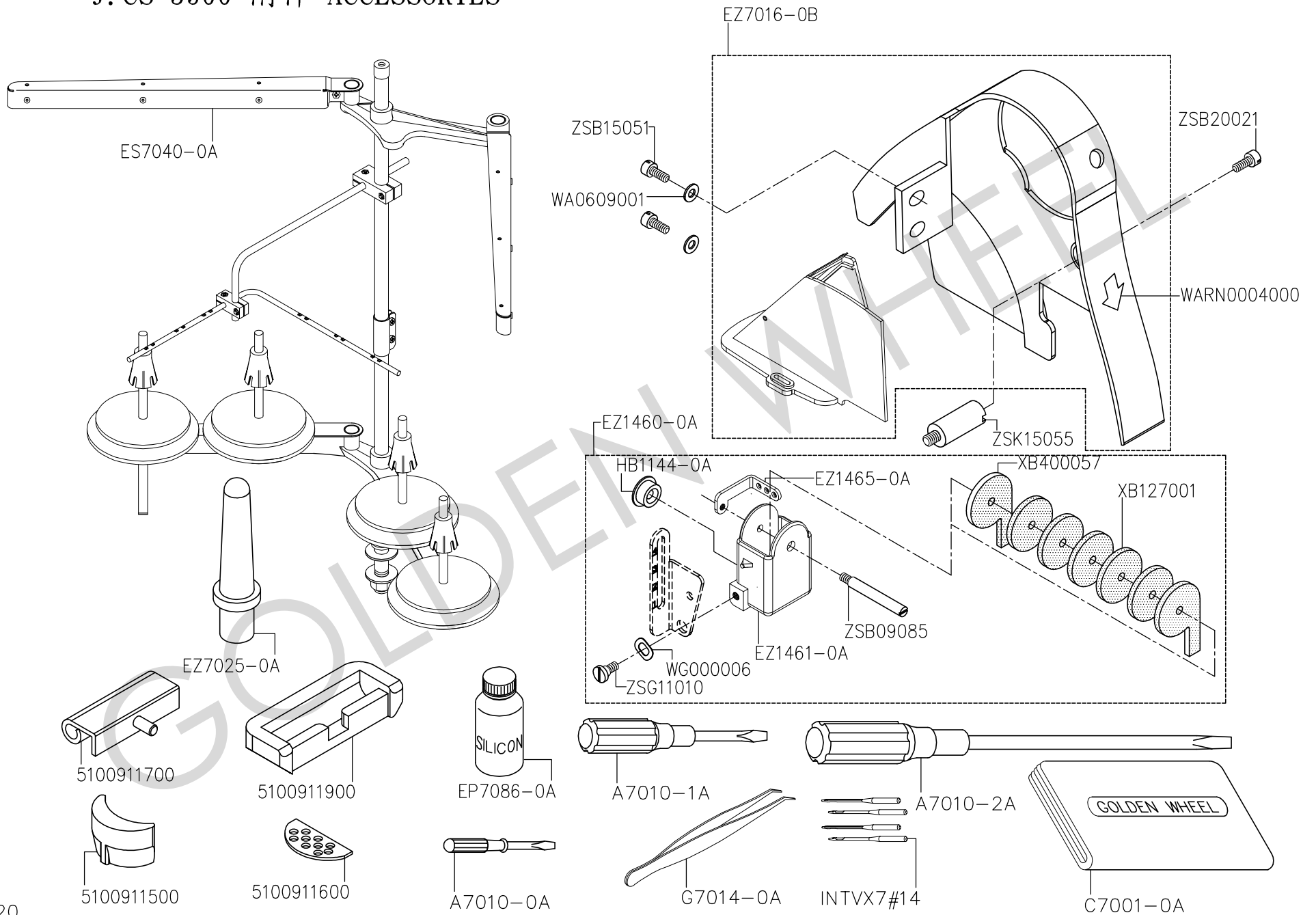
# I. CS-5900 油槽機構 OIL RESERVOIR & LIFTER COMPONENTS



## I、油槽機構 OIL RESERVOIR & KNEE LIFTER COMPONENTS

零件號碼	零件名稱	Name of Part	件數
5100341900	腳押曲桿	KNEEPAD UPRIGHT SHAFT	1
5100342000	連接器	BRACKET	1
5100343900	彈簧	SPRING	1
5100345100	腳弓柄支架	KNEE PAD PLATE	1
5100345200	固定支架	KNEE PAD PLATE SUPPORT	1
5100345300	橡膠	KNEE PAD PLATE RUBBER	1
5100345400	腳弓大柄	KNEEPAD PLATE COVER	1
EJ4108-0A	磁鐵	OIL RESERVOIR MAGNET	1
EZ7013-0A	防油襯墊	GASKET A	2
EZ7014-0A	防油襯墊	GASKET C	1
EZ7015-0A	油槽	OIL RESERVOIR	1
EZ7026-0A	底板橡膠墊	FELT CUSHION	4
EZ7032-0A	膝控頂銷	KNEE PRESS LIFTER ROD	1
EZ7033-0A	膝控軸	KNEE PRESS ROD	1
EZ7038-0A	膝控擺臂	KNEE LIFTER ROTATION ARM	1
OPP00800	墊圈	BUBBER RING	2
RE000100	扣環	RING	1
ZMD06011	螺絲	SCREW M6x17.5	1
ZMD06012	螺絲	SCREW M6x12	1
ZMD06013	螺絲	SCREW M6x1.0	1
ZMH06018	螺絲	SCREW M6x30	1
ZML06001	螺帽	NUT M6x1.0	2
ZSB20002	螺絲	SCREW 5/16-24x10	2

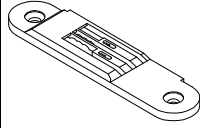
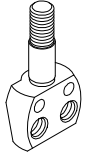
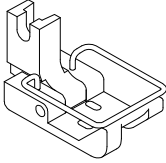
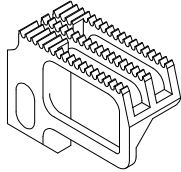
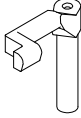
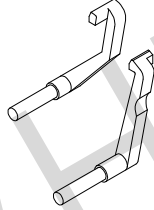
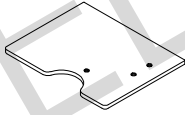
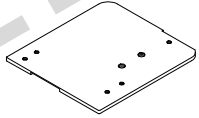
# J. CS-5900 附件 ACCESSORIES



## J、附件 ACCESSORIES

零件號碼	零件名稱	Name of Part	件數
5100911500	防震橡膠	VIBRATION PREVENTING RUBBER	2
5100911600	防震橡膠	VIBRATION PREVENTING RUBBER	2
5100911700	後鈕扣	HEAD HINGE	2
5100911900	後鈕座	RUBBER HINGE	2
A7010-0A	螺絲起子(小)	SCREW DRIVER (SMALL)	1
A7010-1A	螺絲起子(中)	SCREW DRIVER (MEDIUM)	1
A7010-2A	螺絲起子(大)	SCREW DRIVER (LARGE)	1
C7001-0A	防塵罩	VINYL COVER	1
EP7086-0A	矽膠油	SILICONE OIL	1
ES7040-0A	線架組	THREAD STAND, COMPLETE SET	1
EZ1461-0A	矽膠油壺	SILICON OIL CASE	1
EZ1465-0A	油壺線掛	SILICON THREAD GUIDE	1
EZ7016-0B	皮帶輪蓋	BELT COVER	1
EZ7025-0A	枕木	HEAD REST WOOD	1
G7014-0A	鑷子	TWEEZERS	1
HB1144-0A	孔塞	BUBBER PLUG	1
INTVX7#14	針	NEEDLES	4
WA0609001	平墊圈	WASHER	1
WARN0004000	警示貼紙	SAFETY LABEL	1
WG000006	平墊圈	WASHER	1
XB127001	油棉	SILICON OIL FELT	5
XB400057	油棉	SILICON OIL FELT	2
ZSB09085	螺絲	SCREW 9/64-40x3.6	1
ZSB15051	螺絲	SCREW 15/64-28x9	1
ZSB20021	螺絲	SCREW 5/16-24x15	1
ZSG11010	螺絲	SCREW 11/64-40x9	1
ZSK15055	螺柱	SCREW 15/64-28x9	1

K、CS-5900 附錄 APPENDIX

品名 PARTS NAME	針板	針留	押腳組	送料齒	後針擋	前針擋	左角板	右角板
	NEEDLE PLATE	NEEDLE CLAMP	PRESSER FOOT	FEED DOG	REAR NEEDLE GUARD	FRONT NEEDLE GUARD	LEFT BED COVER	RIGHT BED COVER
針距 GAUGE								
1/8" (3.2mm)	EZ6050-0B	EZ1075-0B	EZ1231-0B	EZ6051-0B	EZ6107-0B	EZ6103-0A + EZ6104-0A	EZ4080-0A	EZ4081-0A
5/32" (4.0mm)	EZ6050-0C	EZ1075-0C	EZ1231-0C					
3/16" (4.8mm)	EZ6050-0D	EZ1075-0D	EZ1231-0D	EZ6051-0D				
7/32" (5.6mm)	EZ6050-0E	EZ1075-0E	EZ1231-0E	EZ6051-0F				
1/4" (6.4mm)	EZ6050-0F	EZ1075-0F	EZ1231-0F	EZ6107-0E				
5/16" (7.9mm)	EZ6050-0H	EZ1075-0H	EZ1231-0H	EZ6051-0H	EZ6107-0H		EZ4081-0H	
3/8" (9.5mm)	EZ6050-0K	EZ1075-0K	EZ1231-0K	EZ6051-0K				
1/2" (12.7mm)	EZ6050-0L	EZ1075-0L	EZ1231-0L	EZ6051-0L	EZ6107-0L		EZ4080-0L	EZ4081-0L
CS-5920	EZ6050-0A	EZ1075-0A	EZ1231-0A	EZ6051-0A	EZ6108-0A	EZ6105-0A	EZ4080-0A	EZ4081-0A

## L、CS-5900

## 零件號碼與頁數對照 NUMERICAL PARTS-LIST

零件號碼 PARTS NO.	頁數 PAGE	零件號碼 PARTS NO.	頁數 PAGE	零件號碼 PARTS NO.	頁數 PAGE	零件號碼 PARTS NO.	頁數 PAGE	零件號碼 PARTS NO.	頁數 PAGE
5100119000	21	A7010-0A	21	EZ1053-0A	3	EZ1121-0A	9	EZ1216-0A	15
5100133000	7	A7010-1A	21	EZ1053-0A	15	EZ1122-0A	11	EZ1217-0A	15
5100133100	7	A7010-2A	21	EZ1054-0A	5	EZ1144-0A	3	EZ1218-0A	15
5100140400	5	BN081208	5	EZ1055-0A	5	EZ1150-0A	9	EZ1221-0A	15
5100141000	5	BN14718795	5	EZ1059-0A	5	EZ1154-0A	9	EZ1222-0A	15
5100141400	5	BN242810	11	EZ1062-0A	3	EZ1158-0A	3	EZ1223-0A	15
5100150200	7	BN28331301	9	EZ1063-0A	3	EZ1160-0A	9	EZ1361-0A	17
5100150300	7	C7001-0A	21	EZ1066-0A	5	EZ1161-0A	9	EZ1363-0A	17
5100150400	7	EJ4108-0A	19	EZ1070-0A	5	EZ1162-0A	9	EZ1373-0A	17
5100150800	7	EP7086-0A	21	EZ1073-0A	5	EZ1163-0A	9	EZ1374-0A	3
5100151500	7	ES7040-0A	21	EZ1074-0A	5	EZ1164-0A	9	EZ1426-0A	9
5100154800	7	EZ1009-0A	3	EZ1078-0A	5	EZ1165-0A	9	EZ1461-0A	21
5100341900	19	EZ1010-0A	3	EZ1081-0A	7	EZ1166-0A	9	EZ1465-0A	21
5100342000	19	EZ1011-0A	3	EZ1082-0A	7	EZ1170-0A	9	EZ4007-0A	9
5100343900	19	EZ1012-0A	3	EZ1100-0A	5	EZ1172-0A	9	EZ4008-0A	9
5100345100	19	EZ1014-0A	3	EZ1100-1A	5	EZ1180-0A	7	EZ4011-0A	7
5100345200	19	EZ1021-0A	15	EZ1101-0A	5	EZ1185-0A	7	EZ4012-0A	7, 13
5100345300	19	EZ1021-1A	15	EZ1102-0A	5	EZ1188-0A	7	EZ4013-0A	7
5100345400	19	EZ1023-0A	15	EZ1103-0A	5	EZ1190-0Z	7	EZ4014-0A	7, 13
5100353500	17	EZ1023-1A	15	EZ1104-0A	5	EZ1192-0A	7	EZ4015-0A	7
5100354200	5	EZ1024-0A	15	EZ1105-0A	5	EZ1193-0A	7	EZ4021-0A	7
5100354300	5	EZ1024-1A	15	EZ1106-1A	5	EZ1202-0A	7	EZ4030-0A	11
5100911500	21	EZ1026-0A	15	EZ1110-0A	7	EZ1204-0A	7	EZ4031-0A	11
5100911600	21	EZ1031-0A	15	EZ1111-0A	7	EZ1212-0A	3	EZ4035-0A	11
5100911700	21	EZ1031-1A	15	EZ1113-0A	7	EZ1213-0A	15	EZ4036-0A	11
5100911900	21	EZ1032-0A	15	EZ1116-0A	9	EZ1214-0A	15	EZ4037-0A	11
6120353900	3	EZ1047-0A	5	EZ1117-0A	9	EZ1215-1A	15	EZ4038-0A	11
6120354000	17	EZ1052-0A	3	EZ1118-0A	9	EZ1215-2A	15	EZ4039-0A	11



## L、CS-5900

## 零件號碼與頁數對照 NUMERICAL PARTS-LIST

零件號碼 PARTS NO.	頁數 PAGE	零件號碼 PARTS NO.	頁數 PAGE	零件號碼 PARTS NO.	頁數 PAGE	零件號碼 PARTS NO.	頁數 PAGE	零件號碼 PARTS NO.	頁數 PAGE
EZ4040-0A	11	EZ4115-2A	13	EZ4178-0A	9	EZ4477-0A	17	OPP00680	9
EZ4041-0A	11	EZ4116-0A	13	EZ4208-0A	3	EZ4478-0A	17	OPP0076262	9
EZ4043-0A	11	EZ4116-1A	13	EZ4210-0A	13	EZ6100-0A	13	OPP00800	19
EZ4044-0A	11	EZ4116-2A	13	EZ4211-0A	13	EZ6101-0A	13	OPP02000	17
EZ4045-0A	11	EZ4116-3A	13	EZ4216-0A	13	EZ7013-0A	19	PC1141-0A	3
EZ4047-0A	11	EZ4118-0A	15	EZ4217-0A	13	EZ7014-0A	19	RA200210	5
EZ4051-0A	11	EZ4120-0A	13	EZ4218-0A	13	EZ7015-0A	19	RB200150	11
EZ4070-0A	15	EZ4121-0A	13	EZ4219-0A	13	EZ7016-0B	21	RB400095	13
EZ4071-0A	15	EZ4123-0A	13	EZ4225-0A	13	EZ7026-0A	19	RE000050	7
EZ4078-0A	11	EZ4130-0A	13	EZ4240-0A	13	EZ7032-0A	19	RE000060	7, 15
EZ4080-0A	3	EZ4132-0A	13	EZ4265-0A	13	EZ7033-0A	19	RE00006A	7
EZ4081-0A	3	EZ4141-0A	15	EZ4266-0A	13	EZ7038-0A	19	RE000100	19
EZ4082-0A	3	EZ4142-0A	15	EZ4365-0A	3	G7014-0A	21	RU010100	17
EZ4083-0A	3	EZ4143-0A	15	EZ4456-0A	17	H1025-2A	15	S1014-0A	3
EZ4084-0A	3	EZ4144-0A	15	EZ4457-0A	17	H1042-0A	15	SA1171-0A	3
EZ4085-0A	3	EZ4145-0A	15	EZ4458-0A	17	HB1022-0A	15	SA1300-0A	7
EZ4086-0A	3	EZ4146-0A	15	EZ4461-0A	17	HB1025-0A	15	SEN1000500	13
EZ4087-0A	3	EZ4147-0A	15	EZ4462-0A	17	HB1144-0A	3	SEN1250700	3
EZ4088-0A	3	EZ4148-0A	15	EZ4463-0A	17	HB1144-0A	21	SEN2101000	3
EZ4091-0A	3	EZ4150-0A	13	EZ4464-0A	17	HB1357-0A	17	WA030007	15
EZ4092-0A	3	EZ4170-0A	9	EZ4465-0A	3	HB1358-0A	17	WA030009	15
EZ4093-0A	3	EZ4171-0A	9	EZ4466-0A	3	INTVX7#14	5, 21	WA040011	11
EZ4095-0A	3	EZ4172-0A	9	EZ4467-0A	17	OAGM071103	15	WA049006	3
EZ4096-0A	3	EZ4173-0A	9	EZ4468-0A	17	OAGM112204	7	WA049006	11
EZ4110-0A	13	EZ4174-0A	9	EZ4469-0A	17	OASC142607	5	WA0609001	21
EZ4111-0A	13	EZ4175-0A	9	EZ4472-0A	17	OPP0029178	5	WA069001	9
EZ4115-0A	13	EZ4176-0A	9	EZ4473-0A	17	OPP00400	7, 15	WA079003	7
EZ4115-1A	13	EZ4177-0A	9	EZ4476-0A	17	OPP0044240	5	WA100003	7

## L、CS-5900

## 零件號碼與頁數對照 NUMERICAL PARTS-LIST

零件號碼 PARTS NO.	頁數 PAGE	零件號碼 PARTS NO.	頁數 PAGE	零件號碼 PARTS NO.	頁數 PAGE	零件號碼 PARTS NO.	頁數 PAGE	零件號碼 PARTS NO.	頁數 PAGE
WA150008	5	ZMD06012	19	ZSB06007	7	ZSB11050	9	ZSE09002	7
WARN000108	3	ZMD06013	19	ZSB06024	3	ZSB11061	9	ZSG11010	21
WARN000310	3	ZMH06018	19	ZSB08016	15	ZSB11098	3	ZSG11084	7
WARN000500	3	ZMJ06004	13	ZSB08024	3	ZSB11106	15	ZSG12063	7
WE000030	17	ZML03001	17	ZSB08042	3	ZSB11108	15	ZSG12074	7
WG000005	9	ZML06001	19	ZSB08043	15	ZSB11128	3	ZSG12078	7
WG000006	21	ZMT03007	17	ZSB08048	3	ZSB12002	9, 13	ZSG12079	9
WG000010	9	ZSA09009	9	ZSB08053	15	ZSB12003	9	ZSG18025	9, 11
XA200035	13	ZSA11003	11	ZSB09007	11	ZSB12012	9, 11, 13	ZSK06003	5
XA200065	13	ZSA11004	13	ZSB09010	13	ZSB12016	11	ZSK09005	5
XA200140	7	ZSA11009	5	ZSB09014	5	ZSB12019	9	ZSK11046	15
XA200175	3	ZSA11011	9, 11, 13	ZSB09023	3	ZSB12043	17	ZSK11048	15
XA300150	13	ZSA12008	9	ZSB09027	13	ZSB12052	11	ZSK12033	7
XA300260	11	ZSA15010	5	ZSB09032	13	ZSB12066	17	ZSK15055	21
XA400200	11	ZSA15019	3	ZSB09048	13	ZSB15038	5	ZSK16042	13
XA400240	11	ZSA15028	5, 9, 11, 13	ZSB09051	5	ZSB15051	21	ZSK24009	7
XA400250	11	ZSA15037	7, 11	ZSB09085	21	ZSB16031	9	ZSL11007	15
XB106002	7	ZSA15051	9	ZSB11006	15	ZSB16033	13	ZSL12002	7
XB107002	5	ZSA16011	13	ZSB11010	11	ZSB18011	5	ZSL12004	9, 11
XB127001	21	ZSA16014	5	ZSB11011	9	ZSB20002	19	ZSL15004	9
XB400057	21	ZSA16018	9	ZSB11012	13	ZSB20021	21	ZSL18003	9
XD310001	3	ZSA16021	11	ZSB11017	13	ZSC08010	11	ZSL18004	11
XP300080	13	ZSA16022	7, 13	ZSB11022	9	ZSC09005	9	ZSR16005	15
YD020010	15	ZSA16025	7	ZSB11028	3, 15	ZSC11001	3	ZSR16009	15
YD025016	5	ZSA16028	9	ZSB11029	3	ZSC11006	15		
ZE1155-0A	9	ZSA18002	5	ZSB11029	15, 17	ZSC11017	9		
ZMB03037	17	ZSB06002	3	ZSB11041	3	ZSD15001	3		
ZMD06011	19	ZSB06004	3	ZSB11046	15	ZSE09001	7		