

金輪牌工業用縫紉機

GOLDEN WHEEL INDUSTRIAL SEWING MACHINE

零件分解圖

PARTS BOOK

MODEL: CS-441

CS-471

啓翔股份有限公司

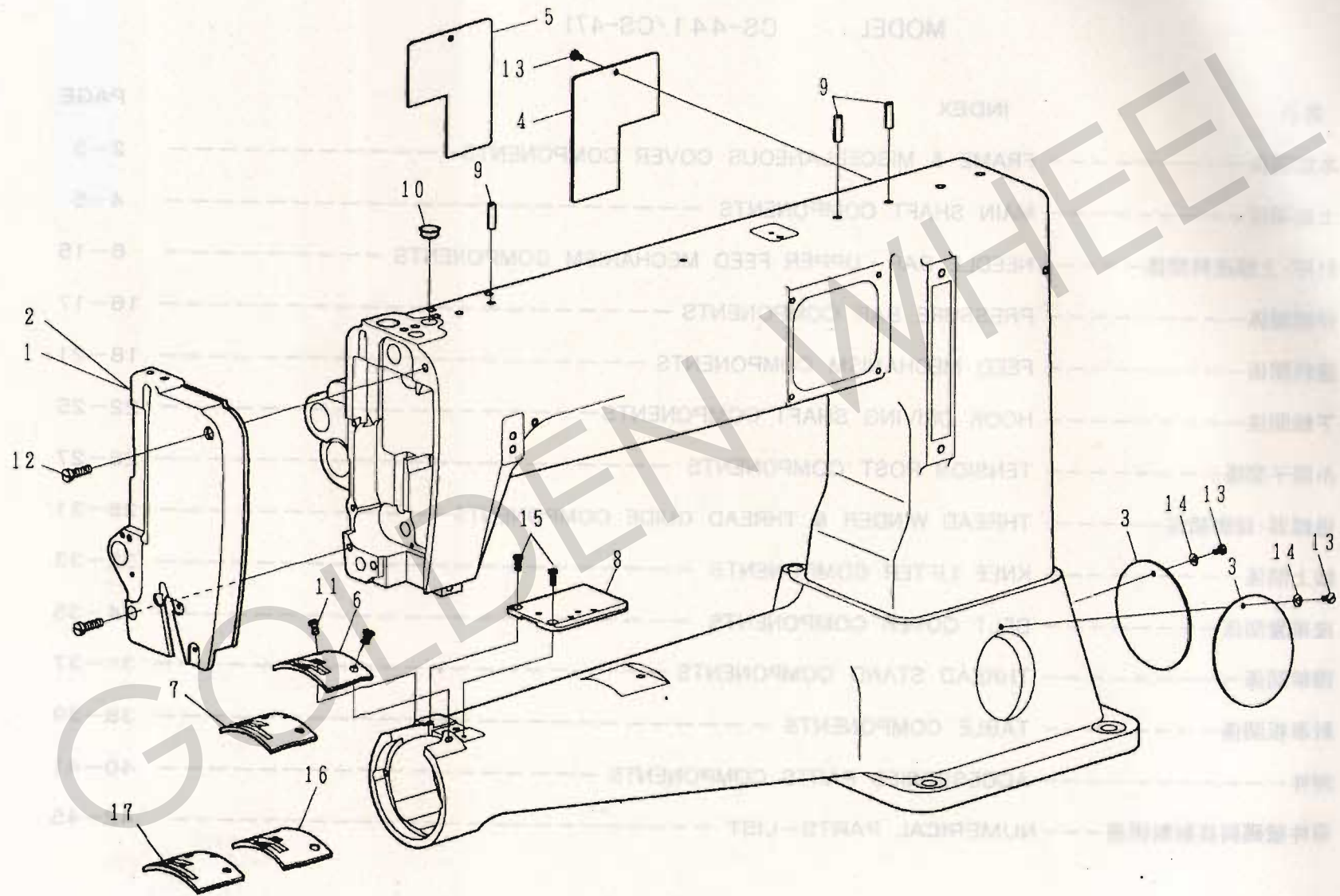
CHEE SIANG INDUSTRIAL CO.,LTD.

目次

MODEL : CS-441/CS-471

索引	INDEX	PAGE
A. 本體關係	FRAME & MISCELLANEOUS COVER COMPONENTS	2-3
B. 上軸關係	MAIN SHAFT COMPONENTS	4-5
C. 針棒·上部送料關係	NEEDLE BAR · UPPER FEED MECHANISM COMPONENTS	6-15
D. 押腳關係	PRESSURE BAR COMPONENTS	16-17
E. 送料關係	FEED MECHANISM COMPONENTS	18-21
F. 下軸關係	HOOK DRIVING SHAFT COMPONENTS	22-25
G. 糸調子關係	TENSION POST COMPONENTS	26-27
H. 捲線器·線掛關係	THREAD WINDER & THREAD GUIDE COMPONENTS	28-31
I. 膝上關係	KNEE LIFTER COMPONENTS	32-33
J. 皮帶套關係	BELT COVER COMPONENTS	34-35
K. 線架關係	THREAD STAND COMPONENTS	36-37
L. 針車板關係	TABLE COMPONENTS	38-39
M. 附件	ACCESSORIES PARTS COMPONENTS	40-41
N. 零件號碼與頁數對照表	NUMERICAL PARTS-LIST	42-45

A. 本體關係 FRAME & MISCELLANEOUS COVER COMPONENTS



A. 本體關係 FRAME & MISCELLANEOUS COVER COMPONENTS

REF.No	NOTE	零件號碼 Part No.	零件名稱	Name of Part	件數 Q'TY	備註 Remarks
1	#01	4410111005	面板(組)	Face Plate Asm.	1	
2	#02	4710111005	面板(組)	Face Plate Asm.	1	
3		4710111100	底座窓板(A)	Side Cover, A	2	
4	#01	4410111200	窓板(B)	Side Cover, B	1	
5	#02	4710111200	窓板(B)	Side Cover, B	1	
6	#01	4410111300	針板	Throat Plate	1	
7	#02	4710111300	針板	Throat Plate	1	
8		4710111600	角板	Slide Plate	1	
9		YD050018	油管	Oil Pipe	3	
10	#01	S1013-0A	油塞	Rubber Plug	1	
11		ZSB12045	螺絲	Screw 3/16-28 L=8	2	
12		ZSB15014	螺絲	Screw 15/64-28 L=18	2	
13		ZSB09047	螺絲	Screw 9/64-40 L=7	3	
14		WC049001	墊圈	Washer	2	
15		ZSB11018	螺絲	Screw 11/64-40 L=9	2	
16	#04	4410111400	針板	Throat Plate (Short)	(1)	
17	#05	4710111400	針板	Throat Plate (Short)	(1)	

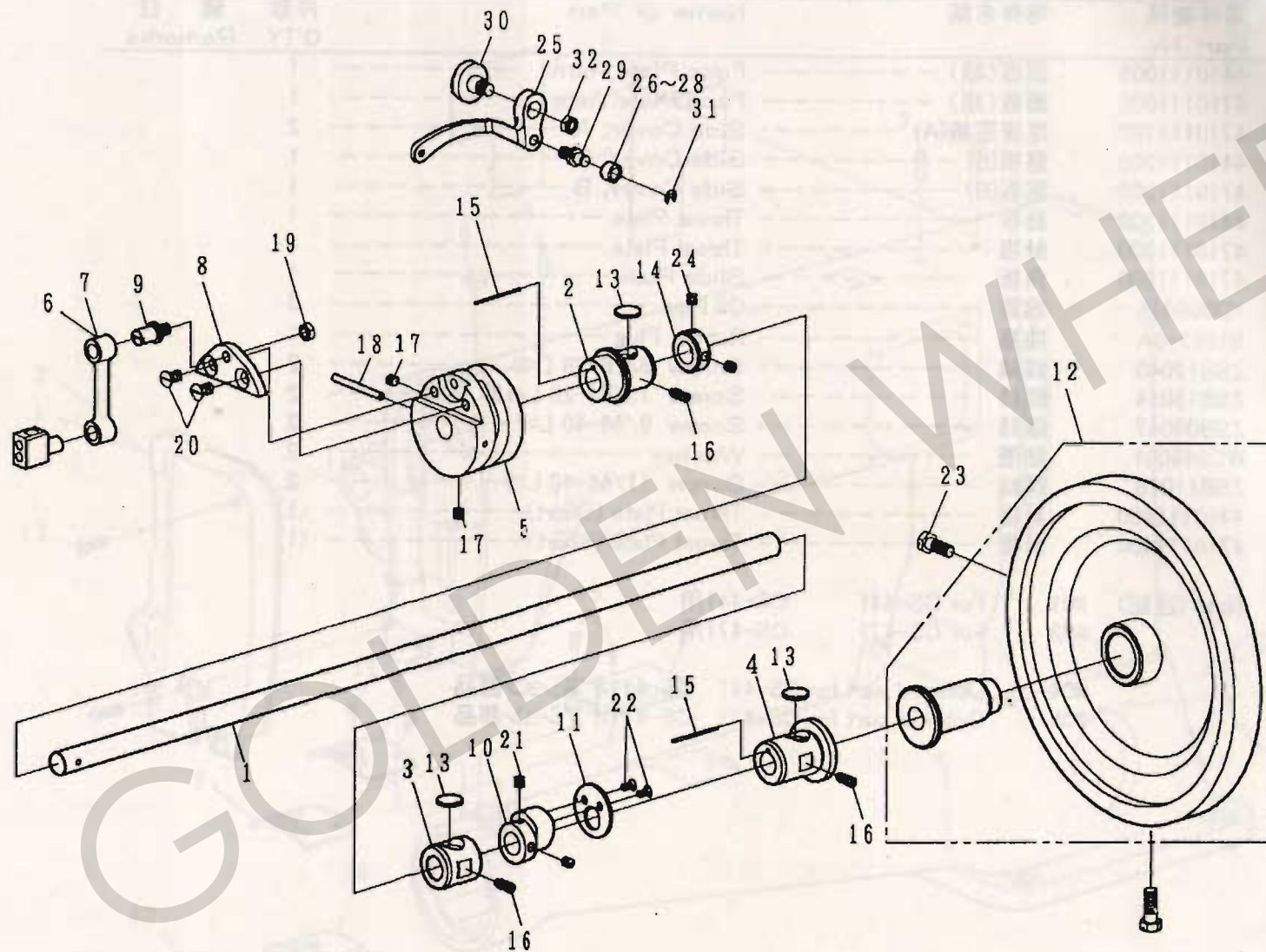
Note (注記) #01. For CS-441 CS-441用

#02. For CS-471 CS-471用

#04. Optional part for CS-441 CS-441オプション部品

#05. Optional part for CS-471 CS-471オプション部品

B. 上軸關係 MAIN SHAFT COMPONENTS

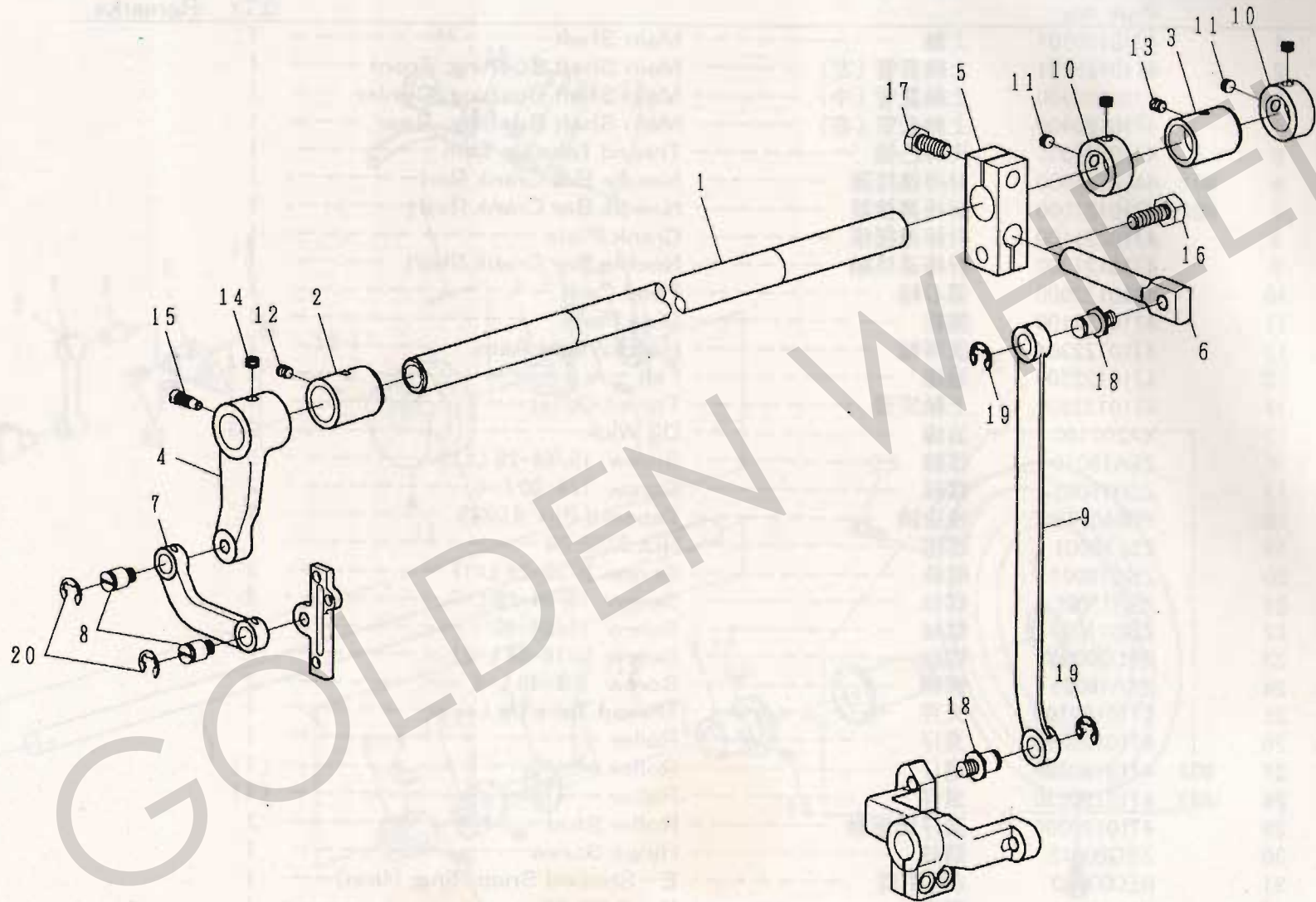


B. 上軸關係 MAIN SHAFT COMPONENTS

REF.No	NOTE	零件號碼 Part No.	零件名稱	Name of Part	件數 Q'TY	備註 Remarks
1		4710120101	上軸	Main Shaft	1	
2		4710120201	上軸套管(左)	Main Shaft Bushing, Front	1	
3		4710120300	上軸套管(中)	Main Shaft Bushing, Center	1	
4		4710120400	上軸套管(右)	Main Shaft Bushing, Rear	1	
5		4710191301	天秤凸輪	Thread Take Up Cam	1	
6	#01	4410121000	針棒連接器	Needle Bar Crank Rod	1	
7	#02	4710121000	針棒連接器	Needle Bar Crank Rod	1	
8		4710121100	針棒連接座	Crank Plate	1	
9		4710121300	針棒連接軸	Needle Bar Crank Shaft	1	
10		4710122000	偏心輪	Feed Cam	1	
11		4710122100	側板	Side Plate	1	
12		4710122304	皮帶輪	Hand Wheel Asm.	1	
13		4710122500	油棉	Felt	3	
14		4710122601	上軸定環	Thrust Collar	1	
15		XA200160	油線	Oil Wick	2	
16		ZSA15010	螺絲	Screw 15/64-28 L=15	3	
17		ZSH16001	螺絲	Screw 1/4-40 L=6	2	
18		YB040045	推拔銷	Tapered Pin 4.0X45	1	
19		ZSL18001	螺帽	Nut 9/32-28	1	
20		ZSC18001	螺絲	Screw 9/32-28 L=11	2	
21		ZSH15001	螺絲	Screw 15/64-28 L=7	2	
22		ZSC11007	螺絲	Screw 11/64-40	2	
23		ZSD20003	螺絲	Screw 5/16-24 L=21	2	
24		ZSA16025	螺絲	Screw 1/4-40 L=6	2	
25		4710190100	天秤	Thread Take Up Lever	1	
26		4710190200	滾仔	Roller	1	
27	#03	4710190220	滾仔	Roller	(1)	
28	#03	4710190230	滾仔	Roller	(1)	
29		4710190300	滾仔固定軸	Roller Stud	1	
30		ZSG20012	螺絲	Hinge Screw	1	
31		RE000040	E型扣環	E-Shaped Snap Ring (4mm)	1	
32		ZSL18001	螺帽	Nut 9/32-28	1	

Note (注記) #01..... For CS-441 CS-441用
 #02..... For CS-471 CS-471用
 #03..... Selective part 選擇部品

C. 針棒·上部送料關係 NEEDLE BAR·UPPER FEED MECHANISM COMPONENTS (CS-441-1)



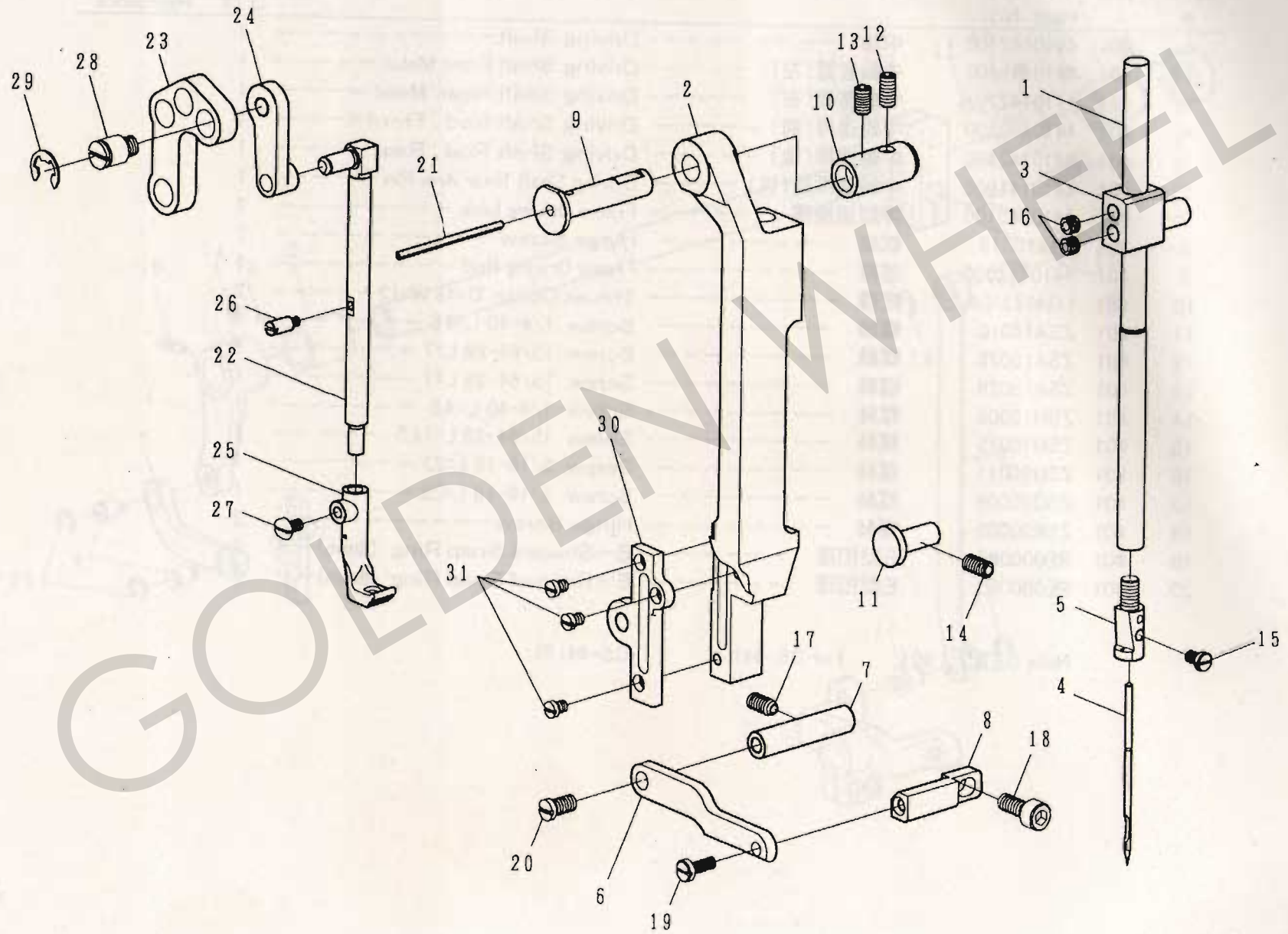
C. 針棒・上部送料關係 NEEDLE BAR · UPPER FEED MECHANISM COMPONENTS (CS-441-1)

REF.No	NOTE	零件號碼 Part No.	零件名稱	Name of Part	件數 Q'TY	備註 Remarks
1	#01	4410142100	中軸	Driving Shaft	1	
2	#01	4410145600	中軸套管(左)	Driving Shaft Front Metal	1	
3	#01	4710142201	中軸套管(右)	Driving Shaft Rear Metal	1	
4	#01	4410142300	中軸連桿(前)	Driving Shaft Rod, Front	1	
5	#01	4410142400	中軸連桿(後)	Driving Shaft Rod, Rear	1	
6	#01	4410141900	中軸連桿銷(後)	Driving Shaft Rear Arm Pin	1	
7	#01	4410143100	押腳連接桿	Frame Driving Link	1	
8	#01	ZSK18019	螺絲	Hinge Screw	2	
9	#01	4410142000	連桿	Frame Driving Rod	1	
10	#01	LG4043-0A	定環	Thrust Collar D=18 W=12	2	
11	#01	ZSA16010	螺絲	Screw 1/4-40 L=4.5	4	
12	#01	ZSA15028	螺絲	Screw 15/64-28 L=7	1	
13	#01	ZSA15028	螺絲	Screw 15/64-28 L=7	1	
14	#01	ZSH16005	螺絲	Screw 1/4-40 L=4.5	1	
15	#01	ZSB15015	螺絲	Screw 15/64-28 L=14.5	1	
16	#01	ZSD20011	螺絲	Screw 5/16-18 L=23	1	
17	#01	ZSD20009	螺絲	Screw 5/16-18 L=25	1	
18	#01	ZSK20009	螺絲	Hinge Screw	2	
19	#01	RE000080	E型扣環	E-Shaped Snap Ring (8mm)	2	
20	#01	RE000080	E型扣環	E-Shaped Snap Ring (8mm)	2	

Note (注記) #01... For CS-441

CS-441用

C. 針棒·上部送料關係 NEEDLE BAR·UPPER FEED MECHANISM COMPONENTS (CS-441-2)



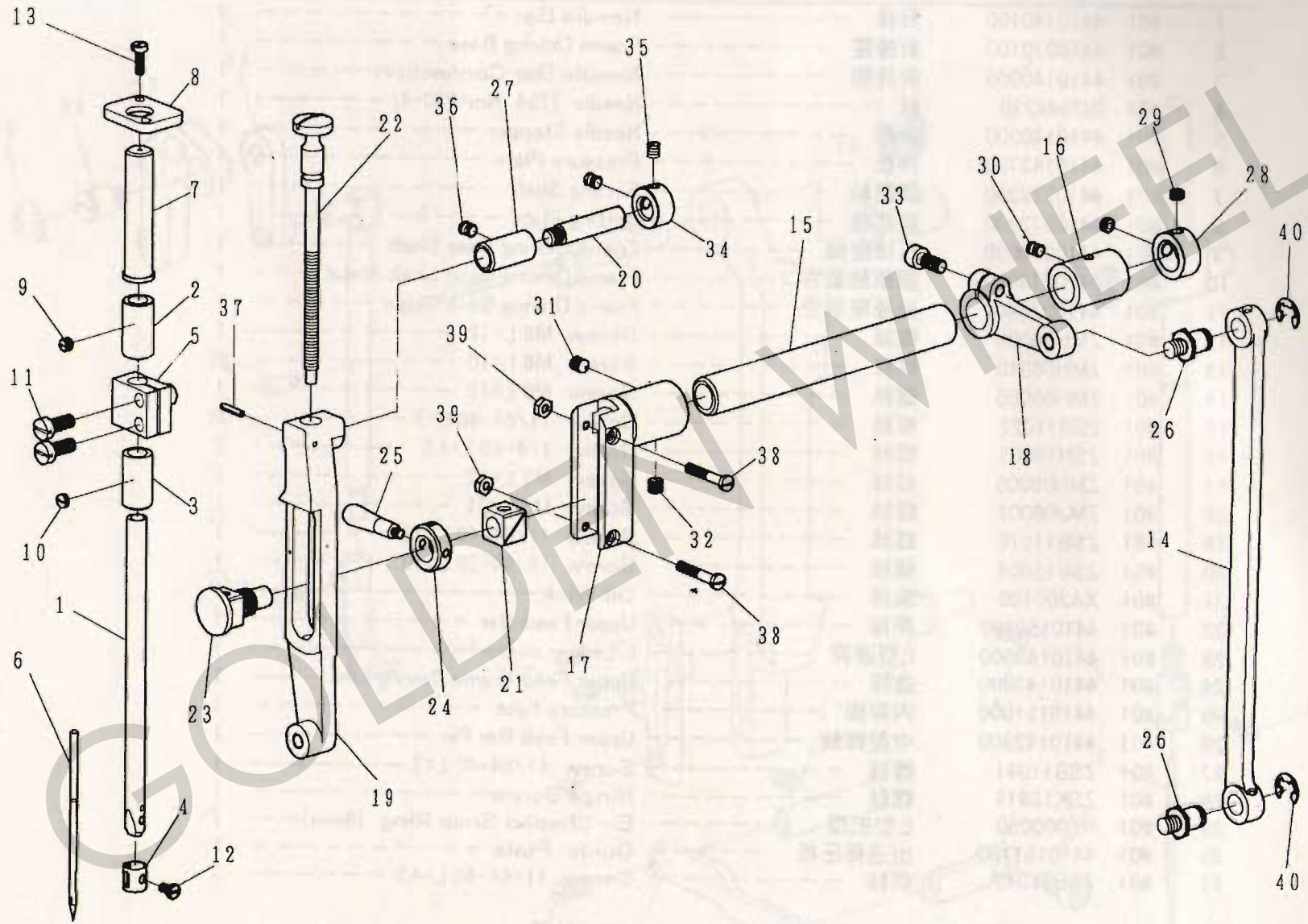
C. 針棒・上部送料關係 NEEDLE BAR・UPPER FEED MECHANISM COMPONENTS(CS-441-2)

REF.No	NOTE	零件號碼 Part No.	零件名稱	Name of Part	件數 Q'TY	備註 Remarks
1	#01	4410140100	針棒	Needle Bar	1	
2	#01	4410270100	針棒座	Frame Driving Base	1	
3	#01	4410140900	針棒鉗	Needle Bar Connection	1	
4	#01	IN794#230	針	Needle (794 Nm=230-4)	1	
5	#01	4410140200	針榴	Needle Stopper	1	
6	#01	4410143700	押板	Pressure Plate	1	
7	#01	4410272300	調節軸	Setting Shaft	1	
8	#01	4410272200	調節板	Setting Plate	1	
9	#01	4410270200	針棒座軸	Frame Driving Base Shaft	1	
10	#01	4410273000	調節軸套管	Frame Driving Base Shaft Metal	1	
11	#01	4410270400	針棒座承受	Frame Driving Base Guide	1	
12	#01	ZMH06005	螺絲	Screw M6 L=12	1	
13	#01	ZMH06010	螺絲	Screw M6 L=10	1	
14	#01	ZMH06005	螺絲	Screw M6 L=12	1	
15	#01	ZSB11022	螺絲	Screw 11/64-40 L=7	1	
16	#01	ZSH16005	螺絲	Screw 1/4-40 L=4.5	2	
17	#01	ZMH06005	螺絲	Screw M6 L=12	1	
18	#01	ZMJ06002	螺絲	Screw M6 L=21	1	
19	#01	ZSB11076	螺絲	Screw 11/64-40 L=12	1	
20	#01	ZSB15004	螺絲	Screw 15/64-28 L=10.5	1	
21	#01	XA200100	油線	Oil Wick	1	
22	#01	4410150100	押棒	Upper Feed Bar	1	
23	#01	4410143600	L型連桿	L Link	1	
24	#01	4410143300	連桿	Upper Feed Frame Driving Link	1	
25	#01	4410151000	內押腳	Pressure Foot	1	
26	#01	4410142900	中壓腳軸	Upper Feed Bar Pin	1	
27	#01	ZSB11041	螺絲	Screw 11/64-40 L=7	1	
28	#01	ZSK18019	螺絲	Hinge Screw	1	
29	#01	RE000080	E型扣環	E-Shaped Snap Ring (8mm)	1	
30	#01	4410151100	出送棒压板	Guide Plate	1	
31	#01	ZSB11042	螺絲	Screw 11/64-40 L=4.5	3	

Note (注記) #01... For CS-441

CS-441用

C. 針棒·上部送料關係 NEEDLE BAR·UPPER FEED MECHANISM COMPONENTS (CS-471-1)



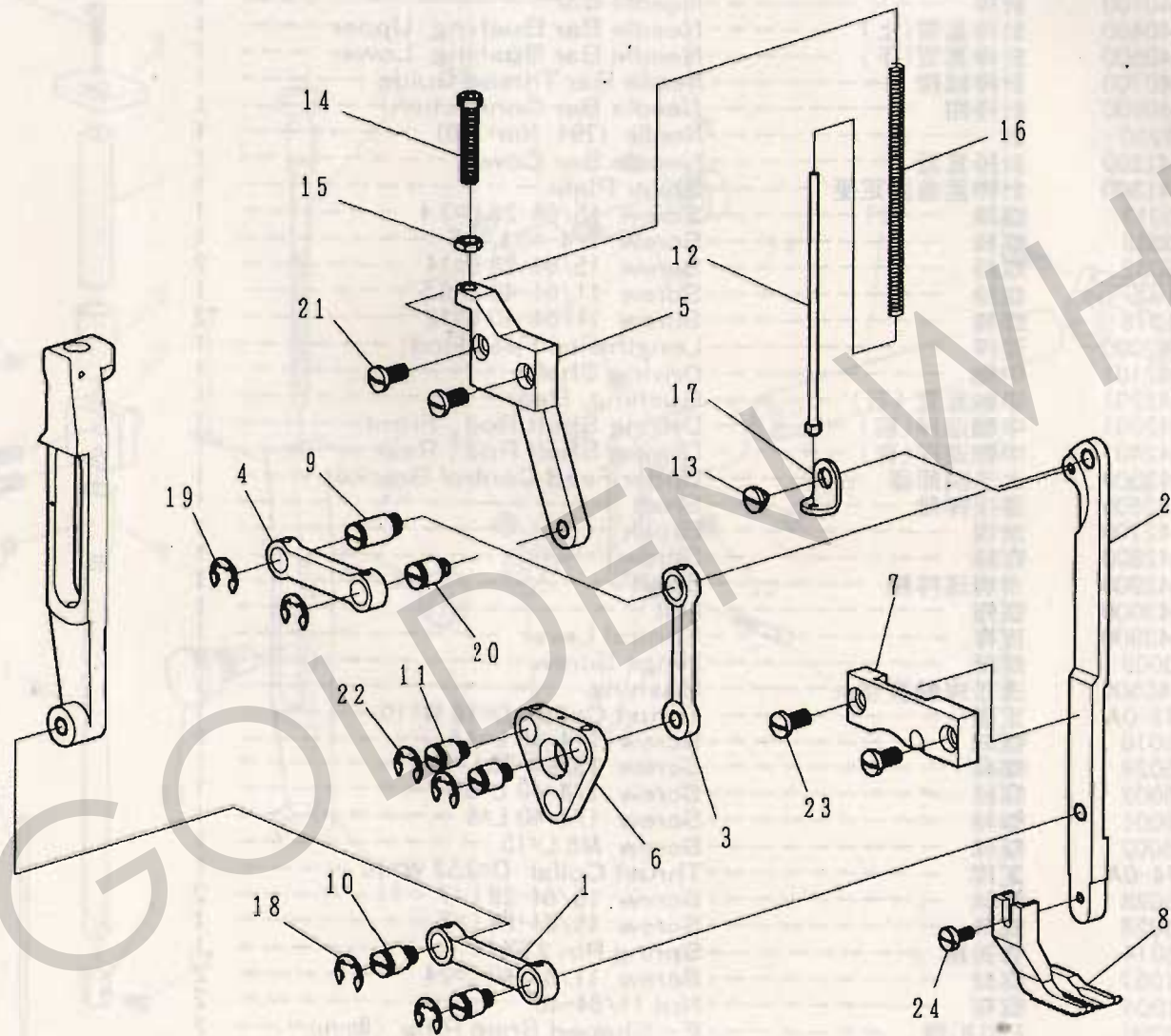
C. 針棒·上部送料關係 NEEDLE BAR · UPPER FEED MECHANISM COMPONENTS (CS-471-1)

REF.No	NOTE	零件號碼 Part No.	零件名稱	Name of Part	件數 Q'TY	備註 Remarks
1	#02	4710140100	針棒	Needle Bar	1	
2	#02	4710140400	針棒套管(上)	Needle Bar Bushing, Upper	1	
3	#02	4710140500	針棒套管(下)	Needle Bar Bushing, Lower	1	
4	#02	4710140700	針棒線掛	Needle Bar Thread Guide	1	
5	#02	4710140900	針棒鉗	Needle Bar Connection	1	
6	#02	IN794#230	針	Needle (794 Nm=230)	1	
7	#02	4710141200	針棒套蓋	Needle Bar Cover	1	
8	#02	4710141300	針棒套蓋固定座	Cover Plate	1	
9	#02	ZSA15013	螺絲	Screw 15/64-28 L=3.4	1	
10	#02	ZSA16039	螺絲	Screw 1/4-40 L=2.5	1	
11	#02	ZSB15032	螺絲	Screw 15/64-28 L=14	2	
12	#02	ZSB11030	螺絲	Screw 11/64-40 L=6.5	1	
13	#02	ZSB11076	螺絲	Screw 11/64-40 L=12	2	
14	#02	4710142000	連桿	Lengthwise Feed Rod	1	
15	#02	4710142101	中軸	Driving Shaft	1	
16	#02	4710142201	中軸套管(右)	Bushing, Rear	1	
17	#02	4710142301	中軸連桿(前)	Driving Shaft Rod, Front	1	
18	#02	4710142401	中軸連桿(後)	Driving Shaft Rod, Rear	1	
19	#02	4710142500	上送調節器	Upper Feed Control Bracket	1	
20	#02	4710142600	連接桿軸	Shaft	1	
21	#02	4710142700	滑塊	Brock	1	
22	#02	4710142800	螺絲	Screw	1	
23	#02	4710142900	滑塊連桿軸	Shaft	1	
24	#02	4710143000	螺帽	Nut	1	
25	#02	4710143900	提桿	Control Lever	1	
26	#02	ZSK20009	螺絲	Hinge Screw	2	
27	#02	4710140500	連接桿軸套管	Bushing	1	
28	#02	LG4043-0A	定環	Thrust Collar D=18 W=10	1	
29	#02	ZSA16010	螺絲	Screw 1/4-40 L=4.5	2	
30	#02	ZSA15028	螺絲	Screw 15/64-28 L=7	1	
31	#02	ZSH16002	螺絲	Screw 1/4-40 L=8.5	1	
32	#02	ZSH16001	螺絲	Screw 1/4-40 L=6	1	
33	#02	ZMJ06002	螺絲	Screw M6 L=15	1	
34	#02	LG1274-0A	定環	Thrust Collar D=9.53 W=10	1	
35	#02	ZSA15028	螺絲	Screw 15/64-28 L=7	2	
36	#02	ZSA15028	螺絲	Screw 15/64-28 L=7	1	
37	#02	YD025014	彈簧銷	Spring Pin 2.8X14	1	
38	#02	ZSB11057	螺絲	Screw 11/64-40 L=24	2	
39	#02	ZSL11004	螺帽	Nut 11/64-40	2	
40	#02	RE000080	E型扣環	E-Shaped Snap Ring (8mm)	2	

Note (注記) #02. . . . For CS-471

CS-471用

C. 針棒·上部送料關係 NEEDLE BAR·UPPER FEED MECHANISM COMPONENTS (CS-471-2)



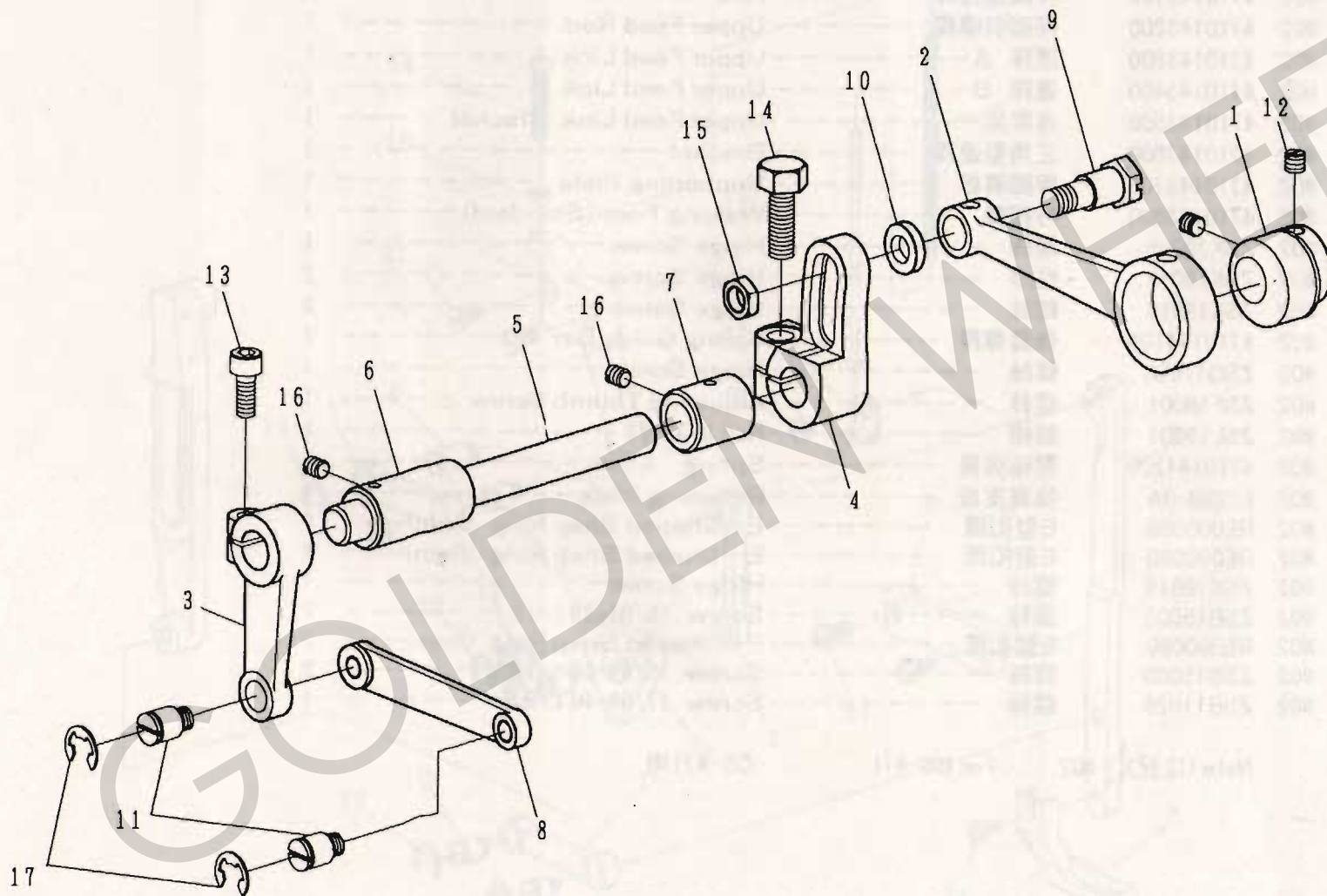
C. 針棒・上部送料關係 NEEDLE BAR・UPPER FEED MECHANISM COMPONENTS(CS-471-2)

REF.No	NOTE	零件號碼 Part No.	零件名稱 Name of Part	件數 Q'TY	備註 Remarks
1	#02	4710143100	押脚連接桿 ----- Rod -----	1	
2	#02	4710143200	押脚引導桿 ----- Upper Feed Rod -----	1	
3	#02	4710143300	連桿 A ----- Upper Feed Link A -----	1	
4	#02	4710143400	連桿 B ----- Upper Feed Link B -----	1	
5	#02	4710143500	連桿架 ----- Upper Feed Link Bracket -----	1	
6	#02	4710143600	三角型連桿 ----- Bracket -----	1	
7	#02	4710143700	押脚導板 ----- Supporting Plate -----	1	
8	#02	4710143800	外押脚 ----- Walking Foot (Standard) -----	1	
9	#02	ZSK20006	螺絲 ----- Hinge Screw -----	1	
10	#02	ZSK18019	螺絲 ----- Hinge Screw -----	2	
11	#02	ZSK18019	螺絲 ----- Hinge Screw -----	2	
12	#02	4710144100	彈簧導桿 ----- Spring Guide Bar -----	1	
13	#02	ZSG11058	螺絲 ----- Hinge Screw -----	1	
14	#02	ZSF18001	螺絲 ----- Adjusting Thumb Screw -----	1	
15	#02	ZSL18003	螺帽 ----- Nut 9/32-28 -----	1	
16	#02	4710144200	壓縮彈簧 ----- Spring -----	1	
17	#02	E1288-0A	彈簧支板 ----- Retaining Plate -----	1	
18	#02	RE000080	E型扣環 ----- E-Shaped Snap Ring (8mm) -----	2	
19	#02	RE000080	E型扣環 ----- E-Shaped Snap Ring (8mm) -----	2	
20	#02	ZSK18019	螺絲 ----- Hinge Screw -----	1	
21	#02	ZSB15005	螺絲 ----- Screw 15/64-28 L=12 -----	2	
22	#02	RE000080	E型扣環 ----- E-Shaped Snap Ring (8mm) -----	2	
23	#02	ZSB15005	螺絲 ----- Screw 15/64-28 L=12 -----	2	
24	#02	ZSB11026	螺絲 ----- Screw 11/64-40 L=9.5 -----	1	

Note (注記) #02. . . . For CS-471

CS-471用

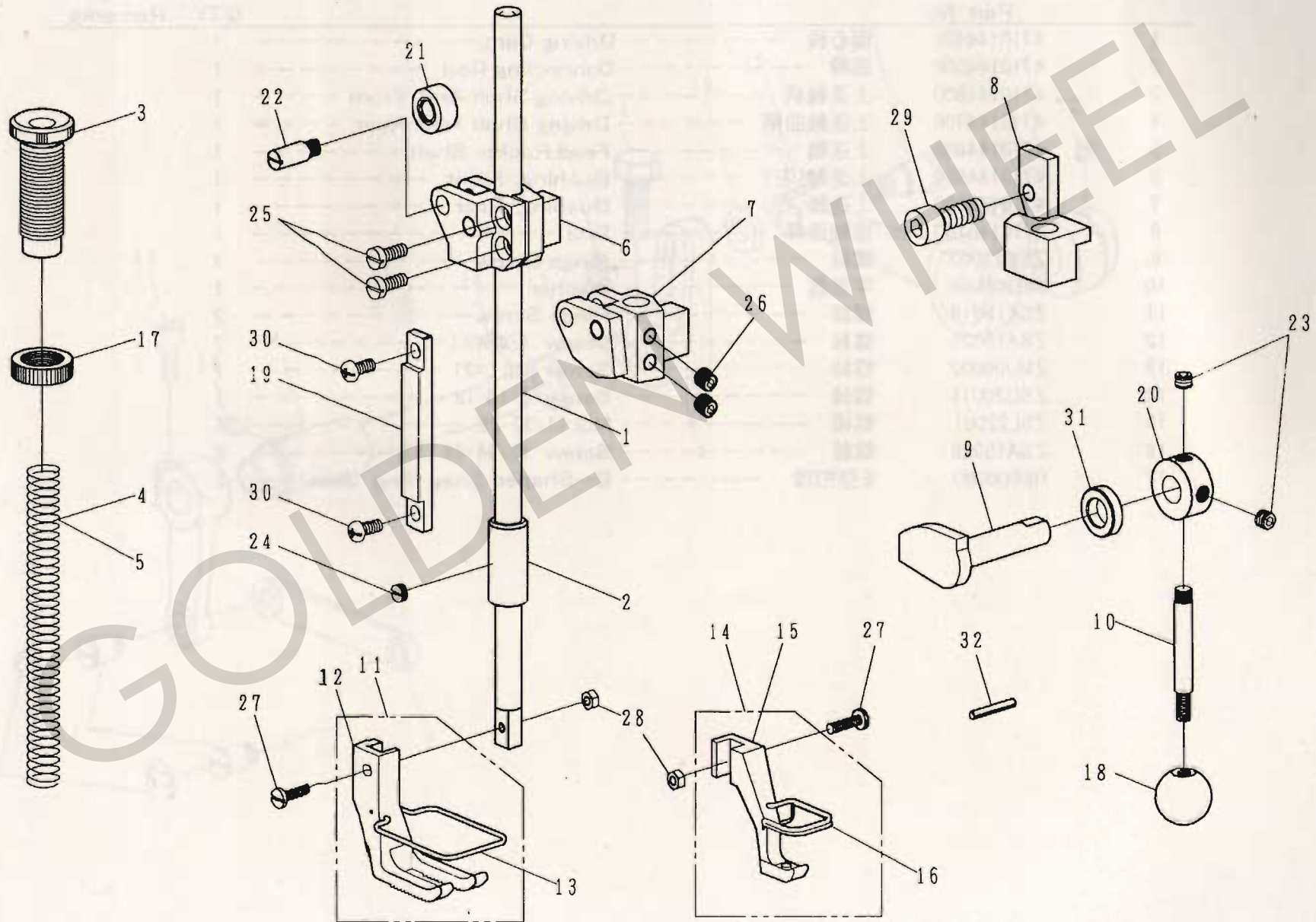
C. 針棒·上部送料關係 NEEDLE BAR·UPPER FEED MECHANISM COMPONENTS



C. 針棒・上部送料關係 NEEDLE BAR · UPPER FEED MECHANISM COMPONENTS

REF.No	NOTE	零件號碼 Part No.	零件名稱 Name of Part	件數 QTY	備註 Remarks
1		4710144401	偏心輪 ----- Driving Cam -----	1	
2		4710144500	連桿 ----- Connecting Rod -----	1	
3		4710144600	上送軸柄 ----- Driving Shaft Arm, Front -----	1	
4		4710144700	上送軸曲柄 ----- Driving Shaft Arm, Rear -----	1	
5		4710144800	上送軸 ----- Feed Rocker Shaft -----	1	
6		4710144900	上送軸(左) ----- Bushing, Front -----	1	
7		4710145000	上送軸(右) ----- Bushing, Rear -----	1	
8		4710145100	搖軸連桿 ----- Rod -----	1	
9		ZSG22002	螺絲 ----- Hinge Screw -----	1	
10		WH208005	平墊圓 ----- Washer -----	1	
11		ZSK18019	螺絲 ----- Hinge Screw -----	2	
12		ZSA16025	螺絲 ----- Screw 1/4-40 L=6 -----	2	
13		ZMJ06002	螺絲 ----- Screw M6 L=21 -----	1	
14		ZSD20011	螺絲 ----- Screw 5/16-18 -----	1	
15		ZSL22001	螺帽 ----- Nut 11/32-28 -----	1	
16		ZSA15028	螺絲 ----- Screw 15/64-28 L=7 -----	2	
17		RE000080	E型扣環 ----- E-Shaped Snap Ring (8mm) -----	2	

D. 押脚關係 PRESSURE BAR COMPONENTS

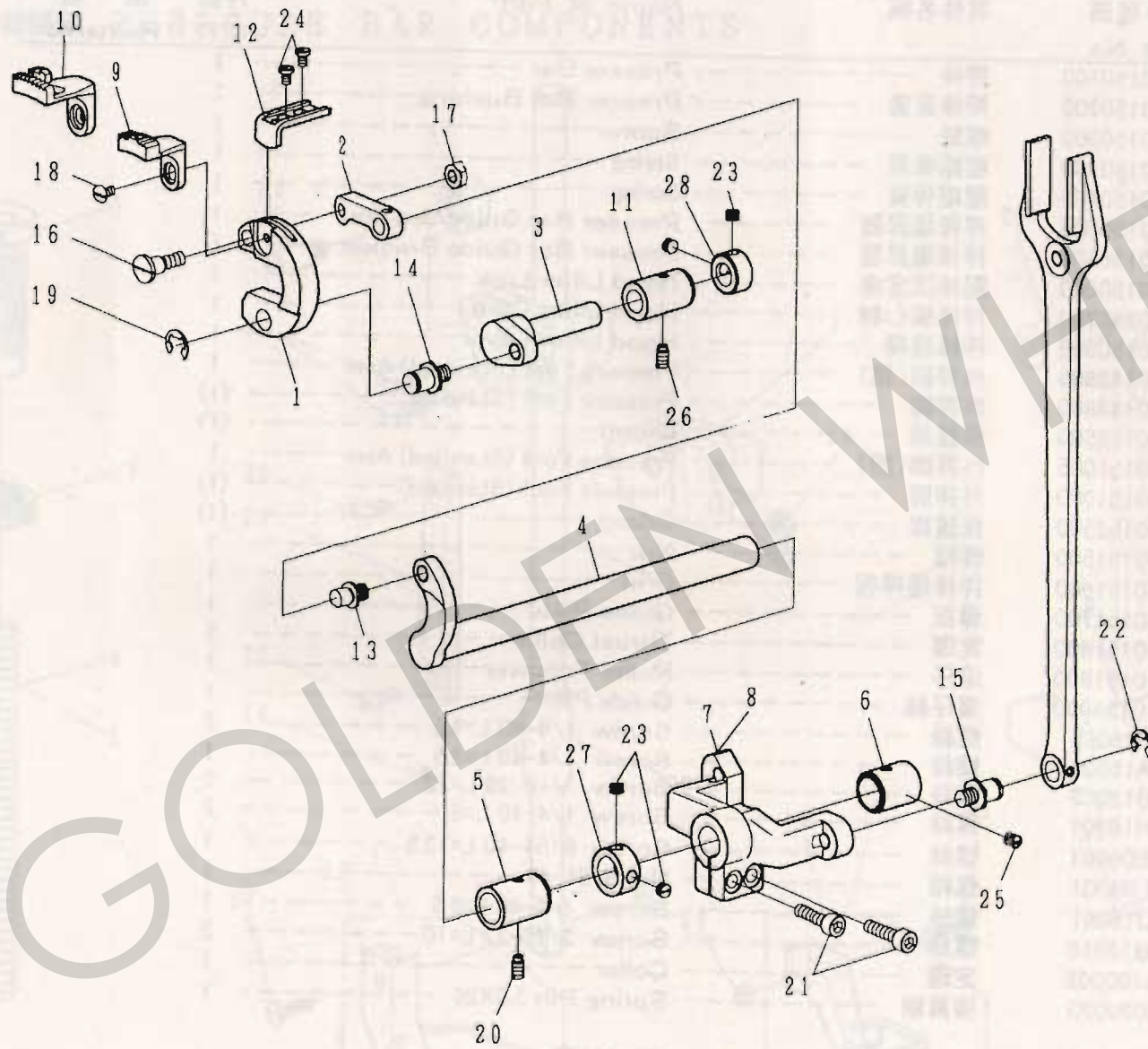


D. 押脚關係 PRESSURE BAR COMPONENTS

REF.No	NOTE	零件號碼	零件名稱	Name of Part	件數	備註
		Part No.			QTY	Remarks
1		4710150100	押棒	Presser Bar	1	
2		4710150200	押棒套管	Presser Bar Bushing	1	
3		4710150300	螺絲	Screw	1	
4	#01	4410150400	壓縮彈簧	Spring	1	
5	#02	4710150400	壓縮彈簧	Spring	1	
6	#01	4410150500	押棒堤昇器	Presser Bar Guide Bracket	1	
7	#02	4710150500	押棒堤昇器	Presser Bar Guide Bracket	1	
8		4710150600	壓棒固定座	Hand Lifter Link	1	
9		4710150700	押棒偏心軸	Hand Lifter Cam	1	
10		4710150800	押棒堤桿	Hand Lifter Lever	1	
11	#01	4410143805	外押脚(組)	Pressure Foot (Standard) Asm.	1	
12	#01	4410143800	外押脚	Pressure Foot (Standard)	(1)	
13	#01	4410152500	保護線	Guard	(1)	
14	#02	4710151005	外押脚(組)	Pressure Foot (Standard) Asm.	1	
15	#02	4710151000	外押脚	Pressure Foot (Standard)	(1)	
16	#02	4710152500	保護線	Guard	(1)	
17		4710151500	螺帽	Nut	1	
18		4710151600	押棒堤桿握	Grip	1	
19		4710151700	導板	Guide Plate	1	
20		4710151800	定環	Thrust Collar	1	
21		4710151900	滾仔	Roller Follower	1	
22		4710152000	滾仔軸	Guide Pin	1	
23		ZSH16005	螺絲	Screw 1/4-40 L=4.5	2	
24		ZSA16039	螺絲	Screw 1/4-40 L=2.5	1	
25	#01	ZSB12002	螺絲	Screw 3/16-28 L=12	2	
26	#02	ZSH16001	螺絲	Screw 1/4-40 L=6	2	
27		ZSB09061	螺絲	Screw 9/64-40 L=13.5	1	
28		ZSL09001	螺帽	Nut 9/64-40	1	
29		ZSJ16001	螺絲	Screw 1/4-40 L=6.5	1	
30		ZSB12016	螺絲	Screw 3/16-32 L=10	2	
31		WA100009	定環	Collar	1	
32		YD030020	彈簧銷	Spring Pin 3.0X20	1	

Note (注記) #01. For CS-441 CS-441用
 #02. For CS-471 CS-471用

E. 送料關係 FEED MECHANISM COMPONENTS (1/2)



E. 送料關係 FEED MECHANISM COMPONENTS (1/2)

REF.No	NOTE	零件號碼 Part No.	零件名稱	Name of Part	件數 Q'TY	備註 Remarks
1		4710160100	送料台	Feed Bar	1	
2		4710160200	送料台連接棒	Feed Bar Link	1	
3		4710160300	上下送料軸	Driving Shaft	1	
4		4710160404	搖動軸	Feed Rocker Shaft	1	
5		4710160600	搖動軸套管(前)	Bushing, Front	1	
6		4710160700	搖動軸套管(後)	Bushing, Rear	1	
7	#01	4410160800	搖動曲軸	Feed Rocker Shaft Crank	1	
8	#02	4710160800	搖動曲軸	Feed Rocker Shaft Crank	1	
9	#01	4410161400	送料齒	Feed Dog	1	
10	#02	4710161400	送料齒	Feed Dog	1	
11		4710161700	上下送料軸套管	Driving Shaft Metal	1	
12		4710162100	送料台押板	Feed Bar Presser	1	
13		ZSK20007	螺絲	Hinge Screw	1	
14		ZSK20009	螺絲	Hinge Screw	1	
15		ZSK20009	螺絲	Hinge Screw	1	
16		ZSG16024	螺絲	Hinge Screw D=7.94 L=8	1	
17		ZSL16004	螺帽	Nut 1/4-24	1	
18		ZSB11041	螺絲	Screw 11/64-40 L=7	1	
19		RE000080	E型扣環	E-Shaped Snap Ring (8mm)	1	
20		ZSA15037	螺絲	Screw 15/64-28 L=10.5	1	
21		ZMJ06004	螺絲	Screw M6	2	
22		RE000080	E型扣環	E-Shaped Snap Ring (8mm)	1	
23		ZSA16029	螺絲	Screw 1/4-40 L=3.5	4	
24		ZSB11035	螺絲	Screw 11/64-40 L=6	2	
25		ZSA15028	螺絲	Screw 15/64-28 L=7	1	
26		ZSA15037	螺絲	Screw 15/64-28 L=10.5	1	
27		LG4044-0A	定環	Thrust Collar D=14.72 W=10	1	
28		LG4014-0A	定環	Thrust Collar D=11.11 W=10	1	

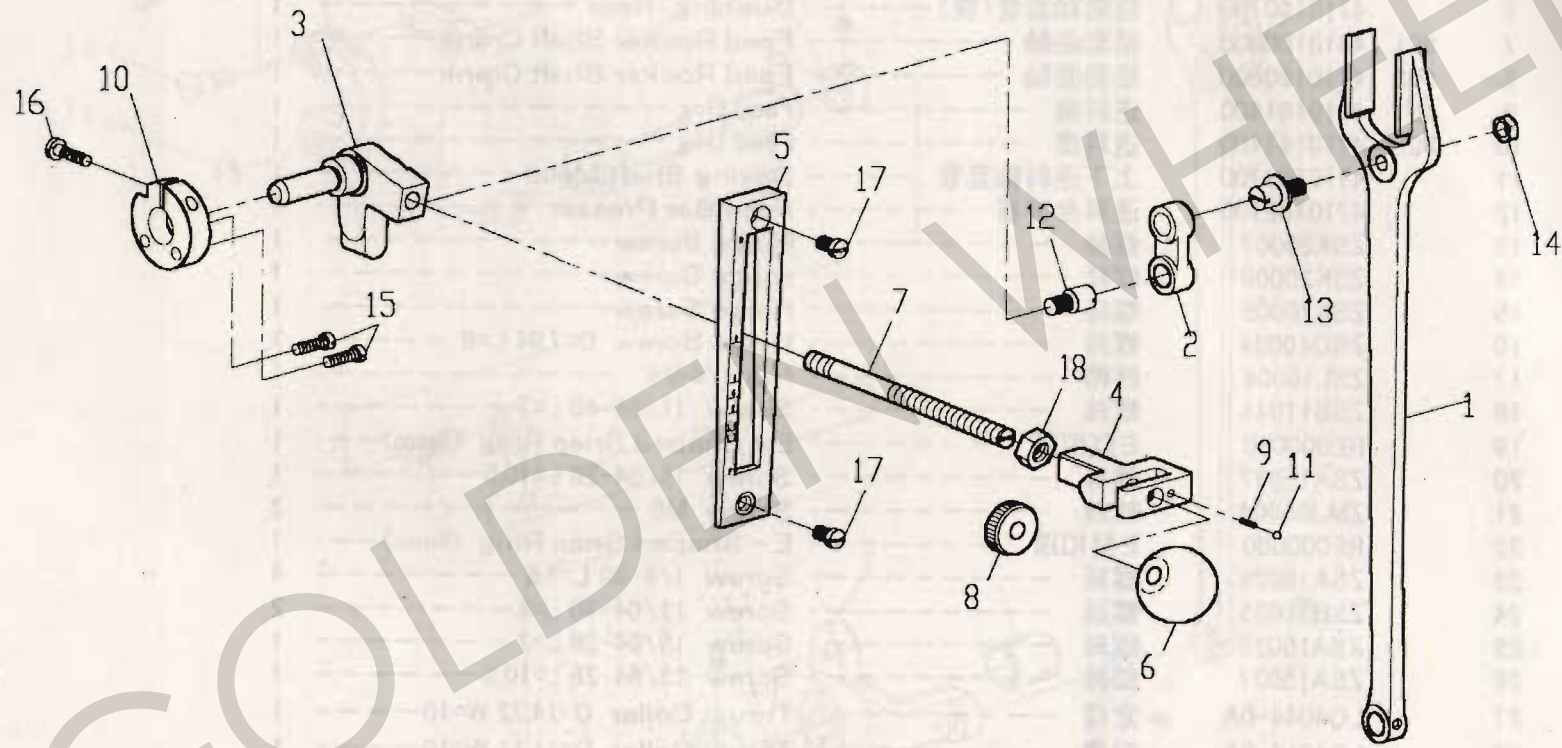
Note (注記) #01..... For CS-441

CS-441用

#02..... For CS-471

CS-471用

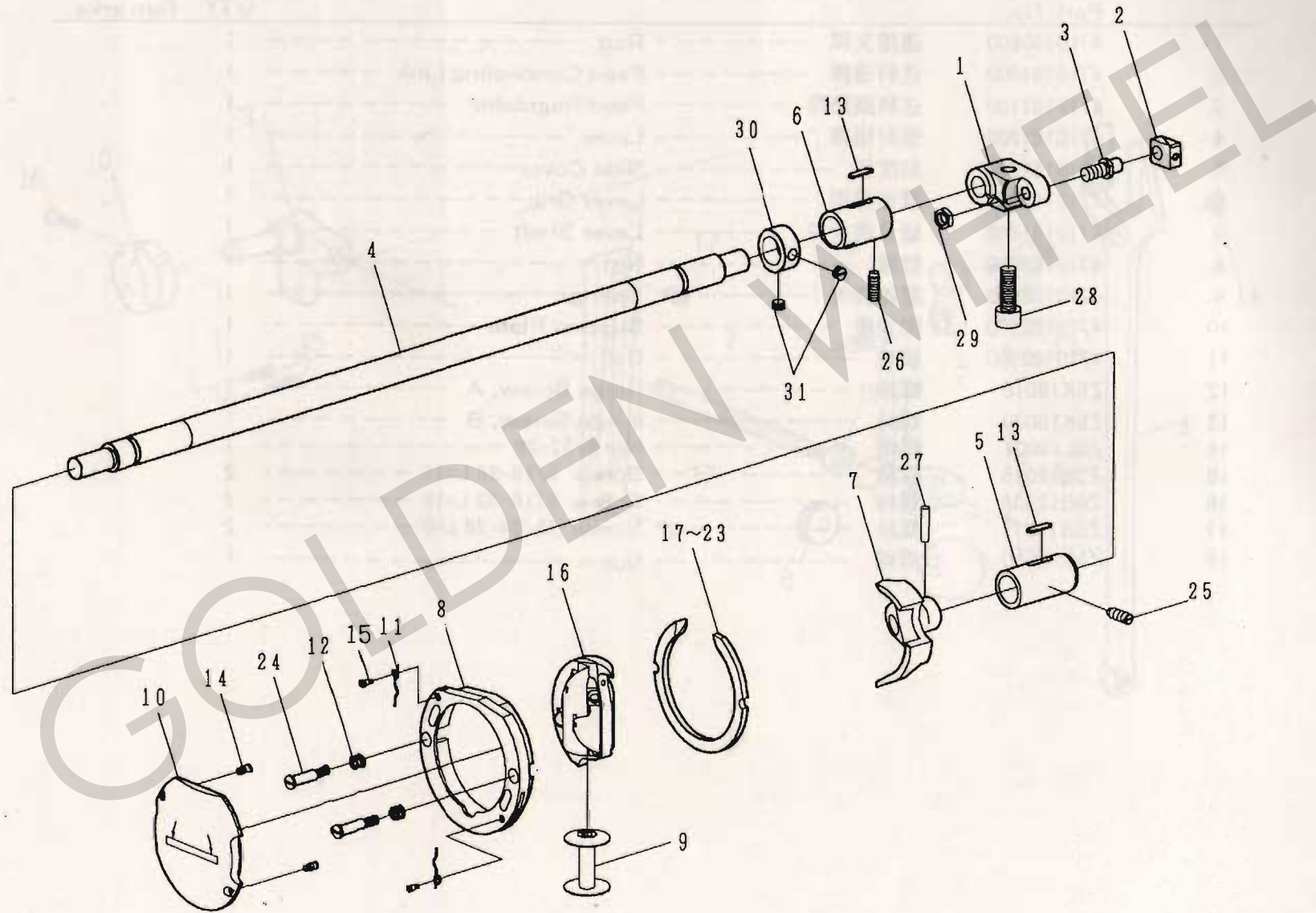
E. 送料關係 FEED MECHANISM COMPONENTS (2/2)



E. 送料關係 FEED MECHANISM COMPONENTS (2/2)

REF.No	NOTE	零件號碼	零件名稱	Name of Part	件數	備註
		Part No.			Q'TY	Remarks
1		4710160900	連接又桿	Rod	1	
2		4710161000	送料連桿	Feed Connecting Link	1	
3		4710161100	送料調節桿	Feed Regulator	1	
4		4710161200	倒針槓桿	Lever	1	
5		4710161300	刻度板	Side Cover	1	
6		4710161600	調節桿握	Lever Grip	1	
7		4710161800	縫目調整桿	Lever Shaft	1	
8		4710161900	螺帽	Nut	1	
9		4710162000	壓縮彈簧	Spring	1	
10		4710162200	固定座	Support Plate	1	
11		4710162300	鋼球	Ball	1	
12		ZSK18018	螺絲	Hinge Screw, A	1	
13		ZSK18020	螺絲	Hinge Screw, B	1	
14		ZSL18001	螺帽	Nut 9/32-28	1	
15		ZSB12015	螺絲	Screw 3/16-28 L=12	2	
16		ZSB12036	螺絲	Screw 3/16-32 L=18	1	
17		ZSB15019	螺絲	Screw 15/64-28 L=9	2	
18		ZML08001	螺帽	Nut	1	

F. 下軸關係 HOOK DRIVING SHAFT COMPONENTS (1/2)



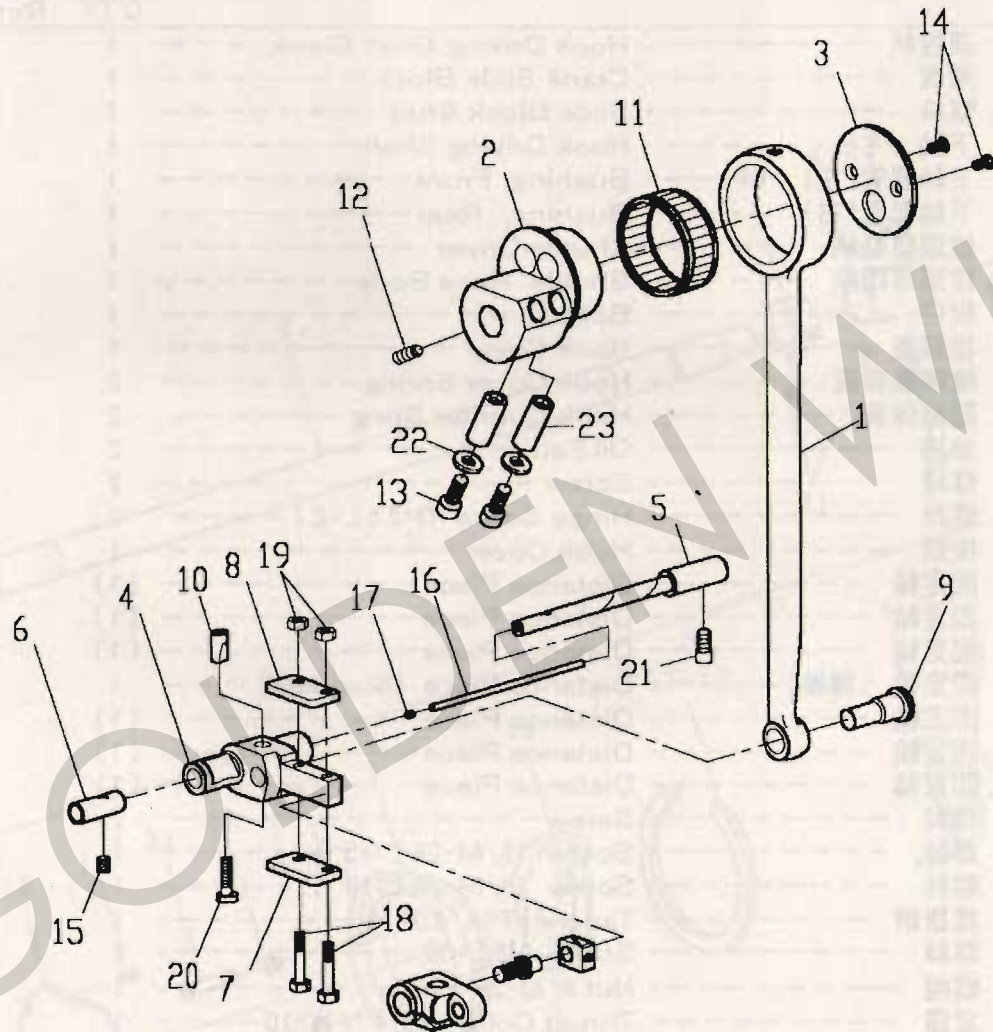
F. 下軸關係 HOOK DRIVING SHAFT COMPONENTS (1/2)

REF.No	NOTE	零件號碼	零件名稱	Name of Part	件數	備註
		Part No.			QTY	Remarks
1		4710182500	連接柄	Hook Driving Shaft Crank	1	
2		4710182600	滑塊	Crank Slide Block	1	
3		4710182700	螺絲	Slide Block Stud	1	
4		4710180100	下軸	Hook Driving Shaft	1	
5		4710180300	下軸套管(左)	Bushing, Front	1	
6		4710180500	下軸套管(右)	Bushing, Rear	1	
7		4410181600	梭頭驅動柄	Shuttle Driver	1	
8		4710181400	梭頭導環座	Shuttle Race Body	1	
9		4710183200	梭仔	Bobbin	1	
10		4710183600	梭頭蓋	Hook Cover	1	
11		4710183700	梭頭蓋彈簧	Hook Cover Spring	2	
12		4710183800	壓縮彈簧	Hook Counter Sprig	2	
13		4710183900	油棉	Oil Felt	2	
14		4710184000	螺絲	Screw	2	
15		ZSG06004	螺絲	Hinge Screw D=2.6 L=2.7	2	
16		4710181300	梭頭	Hook Cover	1	
17	#03	4710184210	固定輪	Distance Piece	(1)	
18	#03	4710184220	固定輪	Distance Piece	(1)	
19	#03	4710184230	固定輪	Distance Piece	(1)	
20		4710184200	固定輪 (標準)	Distance Piece (Standard)	1	
21	#03	4710184240	固定輪	Distance Piece	(1)	
22	#03	4710184250	固定輪	Distance Piece	(1)	
23	#03	4710184260	固定輪	Distance Piece	(1)	
24		ZSG12047	螺絲	Screw	2	
25		ZSA15010	螺絲	Screw 15/64-28 L=15	1	
26		ZSA15010	螺絲	Screw 15/64-28 L=15	1	
27		YB040016	推拔銷	Tapered Pin 4.0X16	1	
28		ZMJ08003	螺絲	Screw M8 L=30	1	
29		ZSL18003	螺帽	Nut 9/32-28	1	
30		LG4044-0A	定環	Thrust Collar D=14.72 W=10	1	
31		ZSA16029	螺絲	Screw 1/4-40 L=3.5	2	

Note (注記) #03... Selective part 選擇部品

F. 下軸關係

HOOK DRIVING SHAFT COMPONENTS (2/2)

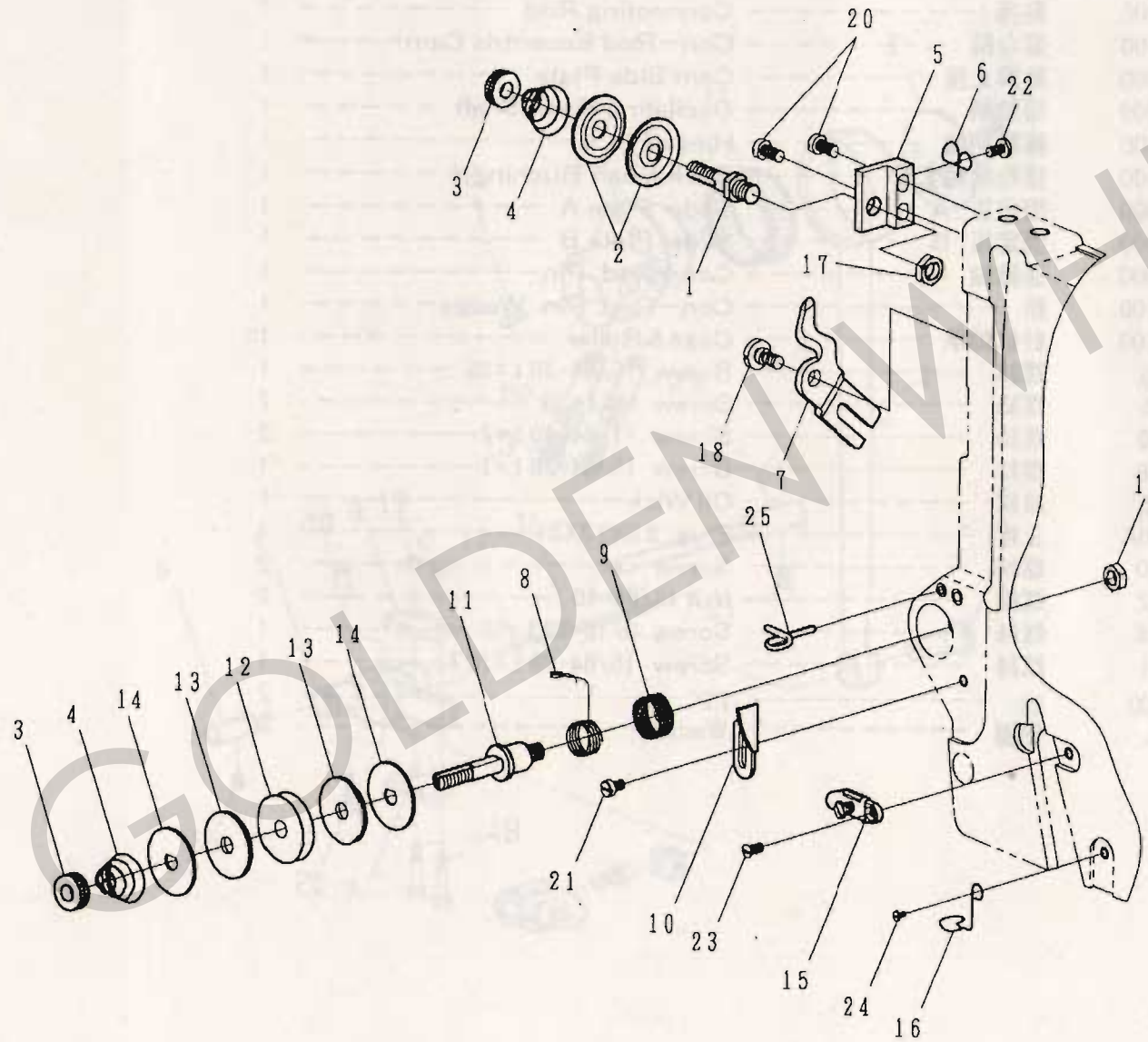


F. 下軸關係 HOOK DRIVING SHAFT COMPONENTS (2/2)

REF.No	NOTE	零件號碼 Part No.	零件名稱	Name of Part	件數 QTY	備註 Remarks
1		4710181800	動桿	Connecting Rod	1	
2		4710181900	偏心輪	Con-Rod Eccentric Cam	1	
3		4710182000	動桿止座	Cam Side Plate	1	
4		4710182200	搖動柄	Oscilating Rock Shaft	1	
5		4710182300	搖動柄軸	Hjnge Pin	1	
6		4710182400	搖動柄軸套管	Rock Shaft Bushing	1	
7		4710182800	固定板 A	Slide Plate A	1	
8		4710182900	固定板 B	Slide Plate B	1	
9		4710183000	連結軸	Con-Rod Pin	1	
10		4710183100	銷	Con-Rod Pin Wedge	1	
11		4710182100	針狀軸承	Cage&Roller	1	
12		ZSH15006	螺絲	Screw 15/64-28 L=15	1	
13		ZMJ06006	螺絲	Screw M8 L=30	2	
14		ZSC11002	螺絲	Screw 11/64-40 L=7	2	
15		ZSA15028	螺絲	Screw 15/64-28 L=7	1	
16		XA300085	油線	Oil Wick	1	
17		LG1275-0A	止栓	Plug 2.9X3.2X3	1	
18		ZSD11010	螺絲	Screw	2	
19		ZSL11002	螺帽	Nut 11/64-40	2	
20		ZSB12036	螺絲	Screw 3/16-32 L=18	1	
21		ZSJ15001	螺絲	Screw 15/64-28 L=10.7	1	
22		4710183400	銷	PIN	2	
23		WA06008	墊圈	Washer	2	

G. 糸調子關係

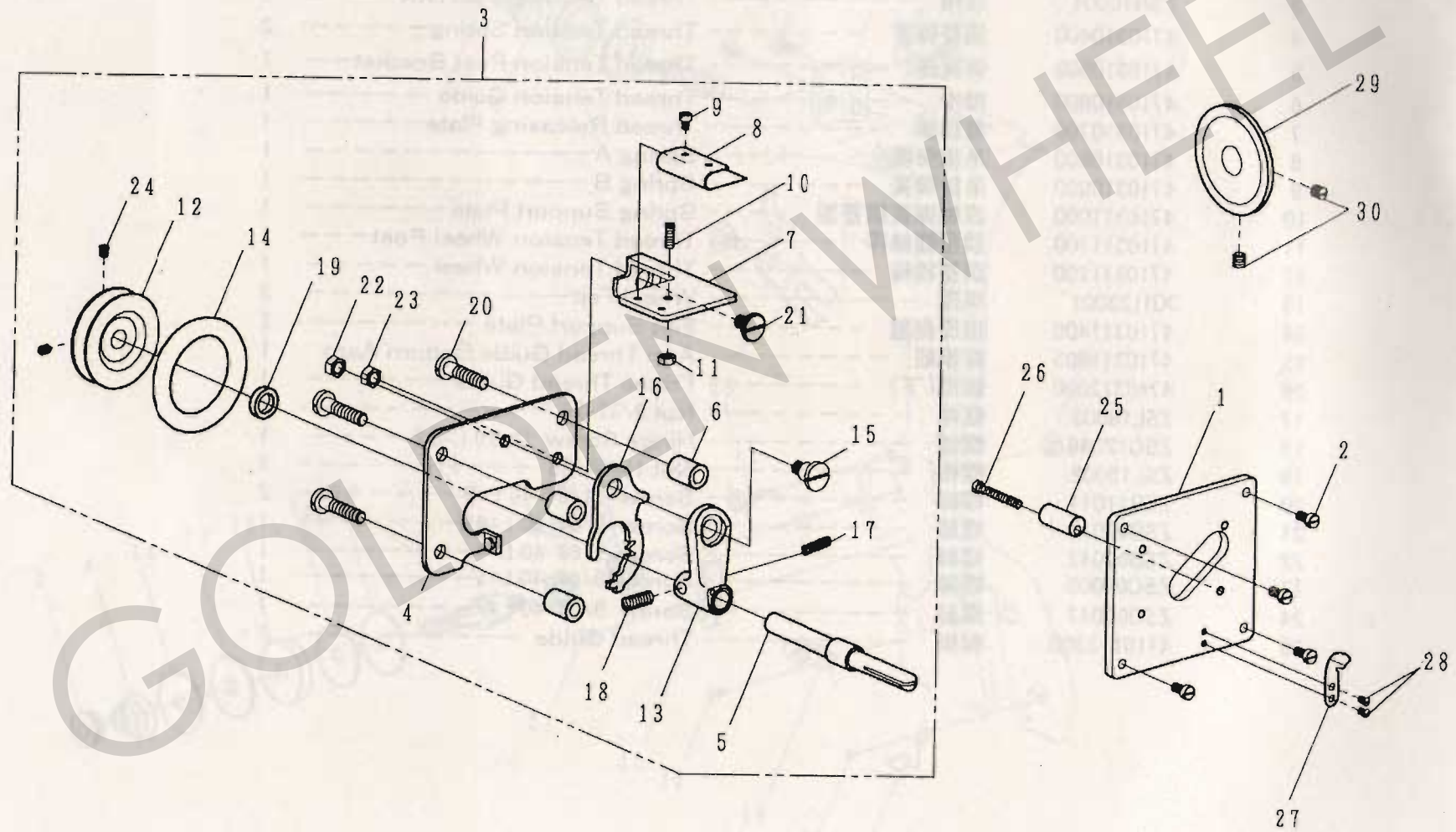
TENSION POST COMPONENTS



G. 系調子關係 TENSION POST COMPONENTS

REF.No	NOTE	零件號碼	零件名稱	Name of Part	件數	備註
		Part No.			Q'TY	Remarks
1		4710310100	調整螺絲桿	Thread Tension Post	1	
2		A1025-0A	壓線盤	Tension Disk	2	
3		ZSN16004	螺帽	Thread Tension Stud Nut	2	
4		4710310400	調整彈簧	Thread Tension Spring	2	
5		4710310500	彈簧座	Thread Tension Post Bracket	1	
6		4710310600	線掛	Thread Tension Guide	1	
7		4710310700	鬆線銷	Thread Releasing Plate	1	
8		4710310800	吊線彈簧	Spring A	1	
9		4710310900	吊線彈簧	Spring B	1	
10		4710311000	線軸彈簧調整器	Spring Support Plate	1	
11		4710311100	調整螺絲桿	Thread Tension Wheel Post	1	
12		4710311200	調整線輪	Thread Tension Wheel	1	
13		XB123001	棉環	Wheel Felt	2	
14		4710311400	棉環側盤	Felt Support Plate	2	
15		4710311605	線掛組	Arm Thread Guide Bottom Asm.	1	
16		4710312000	線掛(下)	Frame Thread Guide	1	
17		ZSL18003	螺帽	Nut 9/32-28	1	
18		ZSG12046	螺絲	Hinge Screw D=6.0 L=3.2	1	
19		ZSL15002	螺帽	Nut 15/64-28	1	
20		ZSB11011	螺絲	Screw 11/64-40 L=9	2	
21		ZSB09014	螺絲	Screw 9/64-40 L=6.0	1	
22		ZSB09047	螺絲	Screw 9/64-40 L=7	1	
23		ZSC09005	螺絲	Screw 9/64-40 L=5	1	
24		ZSB09047	螺絲	Screw 9/64-40 L=7	1	
25		4710113300	線掛	Thread Guide	1	

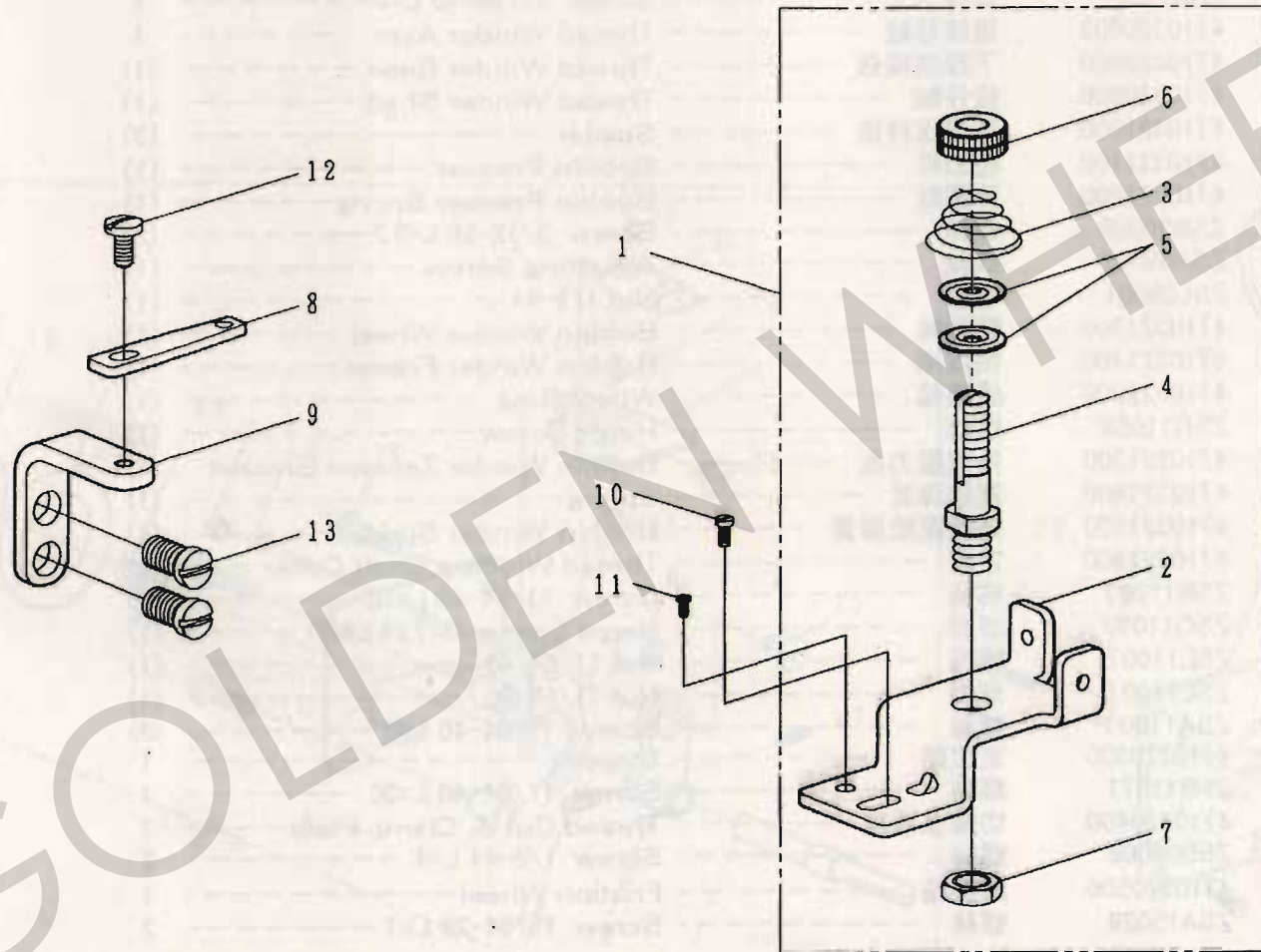
H. 捲線器·線掛關係 THREAD WINDER & THREAD GUIDE COMPONENTS (1/2)



H. 捲線器·線掛關係 THREAD WINDER & THREAD GUIDE COMPONENTS (1/2)

REF.No	NOTE	零件號碼	零件名稱	Name of Part	件數	備註
		Part No.			Q'TY	Remarks
1		4710320100	窓板	Thread Winder Plate	1	
2		ZSB11011	螺絲	Screw 11/64-40 L=9	4	
3		4710320805	捲線器組	Thread Winder Asm.	1	
4		4710320800	下線捲線板	Thread Winder Base	(1)	
5		4710320900	梭仔軸	Thread Winder Shaft	(1)	
6		4710321000	定位保持銷	Spacer	(3)	
7		4710321100	壓力板	Bobbin Presser	(1)	
8		4710321200	彈簧板	Bobbin Presser Spring	(1)	
9		ZSB06008	螺絲	Screw 3/32-56 L=3.3	(2)	
10		ZSA08007	螺絲	Adjusting Screw	(1)	
11		ZSL08001	螺帽	Nut 1/8-44	(1)	
12		4710321300	驅動輪	Bobbin Winder Wheel	(1)	
13		4710321400	捲線柄	Bobbin Winder Frame	(1)	
14		4710322000	護膜輪	Wheel Ring	(1)	
15		ZSG11059	螺絲	Hinge Screw	(1)	
16		4710321500	捲線壓力板	Bobbin Winder Tension Bracket	(1)	
17		4710321600	壓縮彈簧	Spring	(1)	
18		4710321800	捲線壓縮彈簧	Bobbin Winder Spring	(1)	
19		4710321900	定環	Thread Winding Shaft Collar	(1)	
20		ZSB11083	螺絲	Screw 11/64-40 L=18	(3)	
21		ZSG11057	螺絲	Hinge Screw D=7.24 L=1.9	(1)	
22		ZSL11007	螺帽	Nut 11/64-40	(1)	
23		ZSL11007	螺帽	Nut 11/64-40	(1)	
24		ZSA11003	螺絲	Screw 11/64-40 L=5	(2)	
25		4710320300	定位銷	Stopper	1	
26		ZSB11071	螺絲	Screw 11/64-40 L=30	1	
27		4710320400	切線保持板	Thread Cut & Clamp Plate	1	
28		ZSB08008	螺絲	Screw 1/8-44 L=4	2	
29		4710320500	摩擦輪	Friction Wheel	1	
30		ZSA15028	螺絲	Screw 15/64-28 L=7	2	

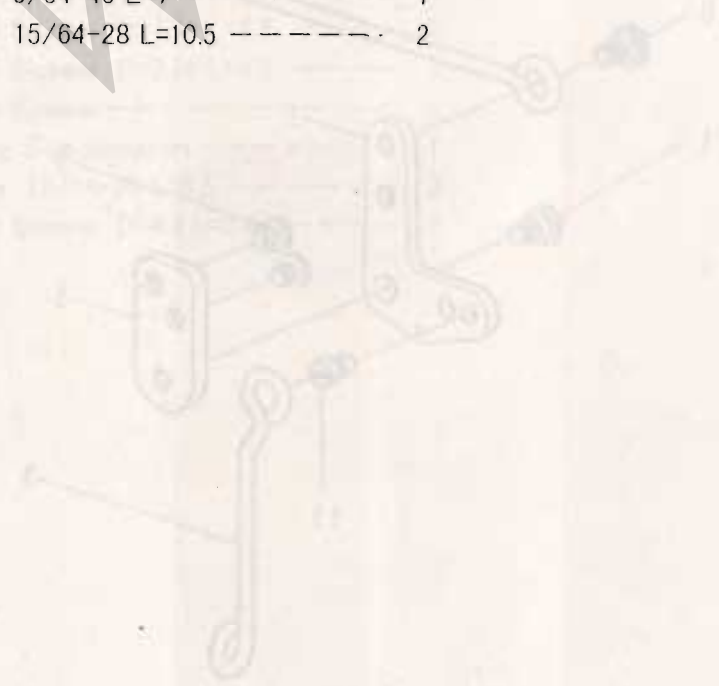
H. 捲線器·線掛關係 THREAD WINDER & THREAD GUIDE COMPONENTS (2/2)



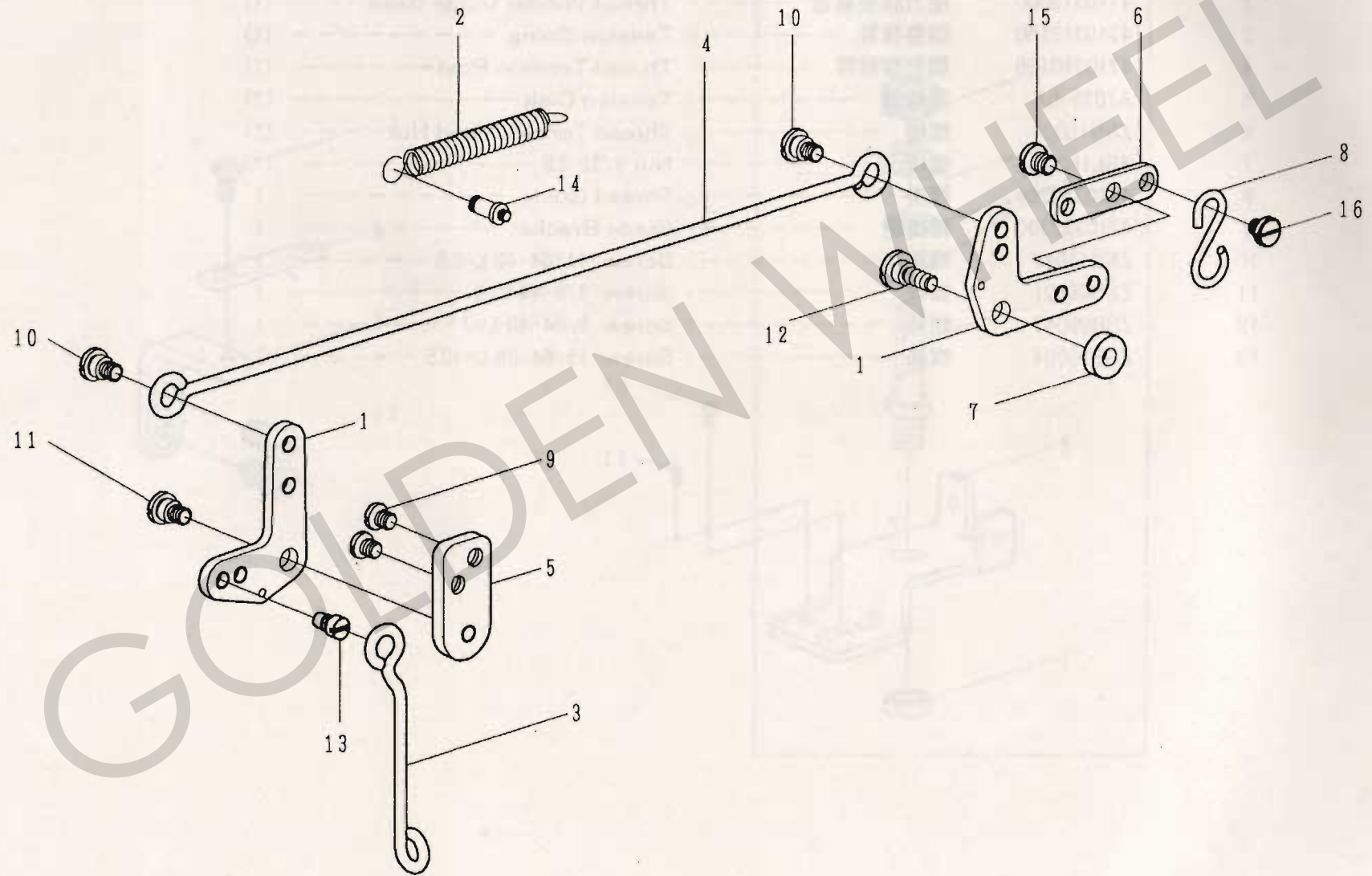
H. 捲線器·線掛關係 THREAD WINDER & THREAD GUIDE COMPONENTS (2/2)

REF.No	NOTE	零件號碼	零件名稱	Name of Part	件數	備註
		Part No.			Q'TY	Remarks
1		4710313005	壓力調整器組	Thread Winder Guide Base Asm.	1	
2		4710313000	壓力調整器台	Thread Winder Guide Base	(1)	
3		4710313100	調整彈簧	Tension Spring	(1)	
4		4710310100	調整螺絲桿	Thread Tension Post	(1)	
5		A1025-0A	壓線盤	Tension Disk	(2)	
6		ZSN16004	螺帽	Thread Tension Stud Nut	(1)	
7		ZSL18003	螺帽	Nut 9/32-28	(1)	
8		4710322200	線掛	Thread Guide	1	
9		4710322300	線掛座	Guide Bracket	1	
10		ZSB11015	螺絲	Screw 11/64-40 L=3.5	1	
11		ZSB08001	螺絲	Screw 1/8-44 L=6	1	
12		ZSB09047	螺絲	Screw 9/64-40 L=7	1	
13		ZSB15004	螺絲	Screw 15/64-28 L=10.5	2	

GOLDEN WHEEL



I. 膝上關係 KNEE LIFTER COMPONENTS

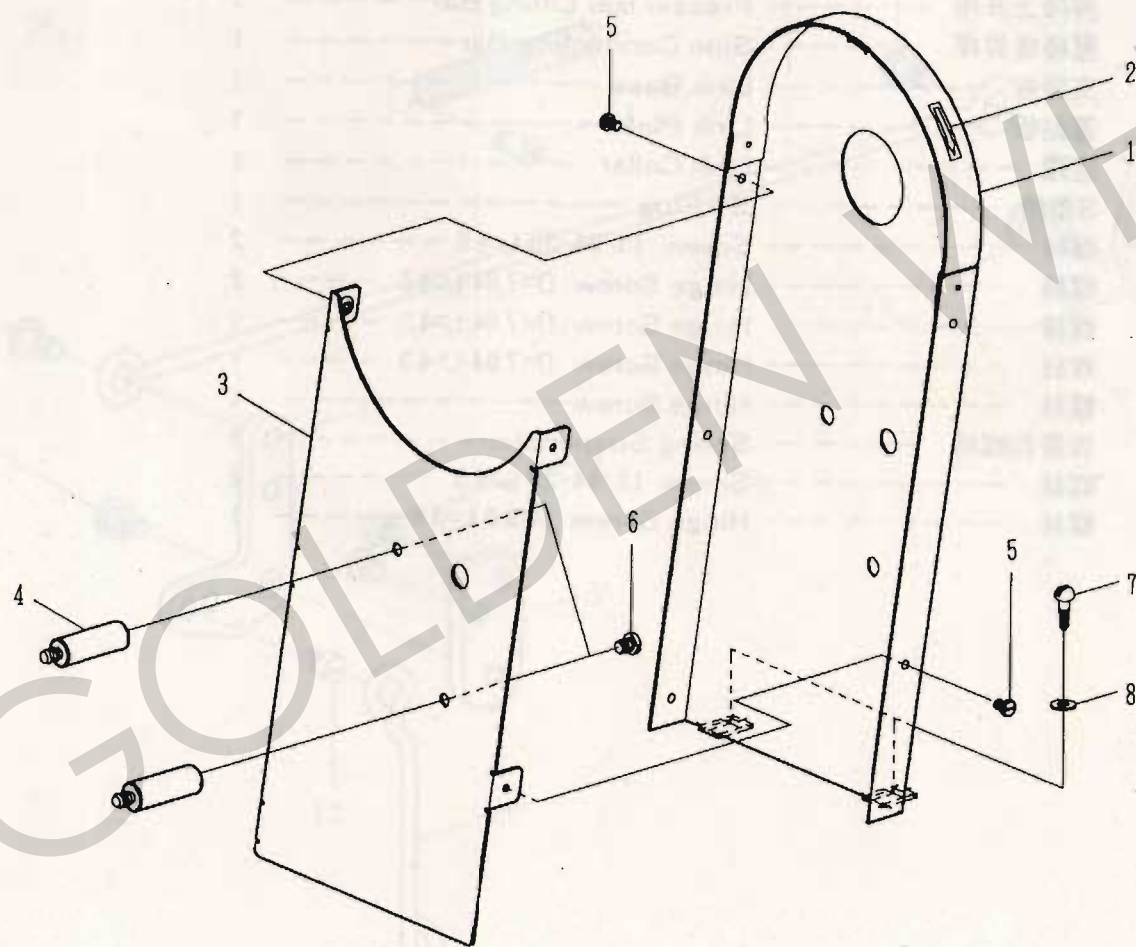


I. 膝上關係 KNEE LIFTER COMPONENTS

REF.No	NOTE	零件號碼	零件名稱	Name of Part	件數	備註
		Part No.			Q'TY	Remarks
1		4710340100	押棒上升臂	Presser Bar Lifting Link	2	
2		4710340200	拉伸彈簧	Presser Bar Lifting Spring	1	
3		4710340300	押棒上升桿	Presser Bar Lifting Bar	1	
4		4710340400	壓棒堤昇桿	Side Connecting Bar	1	
5		4710340500	支持板	Link Base	1	
6		4710340600	連結板	Link Plate	1	
7		4710340700	定環	Link Collar	1	
8		4710340800	S型銷	S-Plug	1	
9		ZSB15001	螺絲	Screw 15/64-28 L=6.5	2	
10		ZSG15045	螺絲	Hinge Screw D=7.94 L=4.3	2	
11		ZSG15045	螺絲	Hinge Screw D=7.94 L=4.3	1	
12		ZSG15046	螺絲	Hinge Screw D=7.94 L=4.3	1	
13		4710341200	螺絲	Hinge Screw	1	
14		ZSK11037	彈簧鉤螺絲	Spring Suspension	1	
15		ZSB15001	螺絲	Screw 15/64-28 L=6.5	2	
16		ZSG16025	螺絲	Hinge Screw D=8.0 L=3.4	1	

J. 皮帶套關係

BELT COVER COMPONENTS



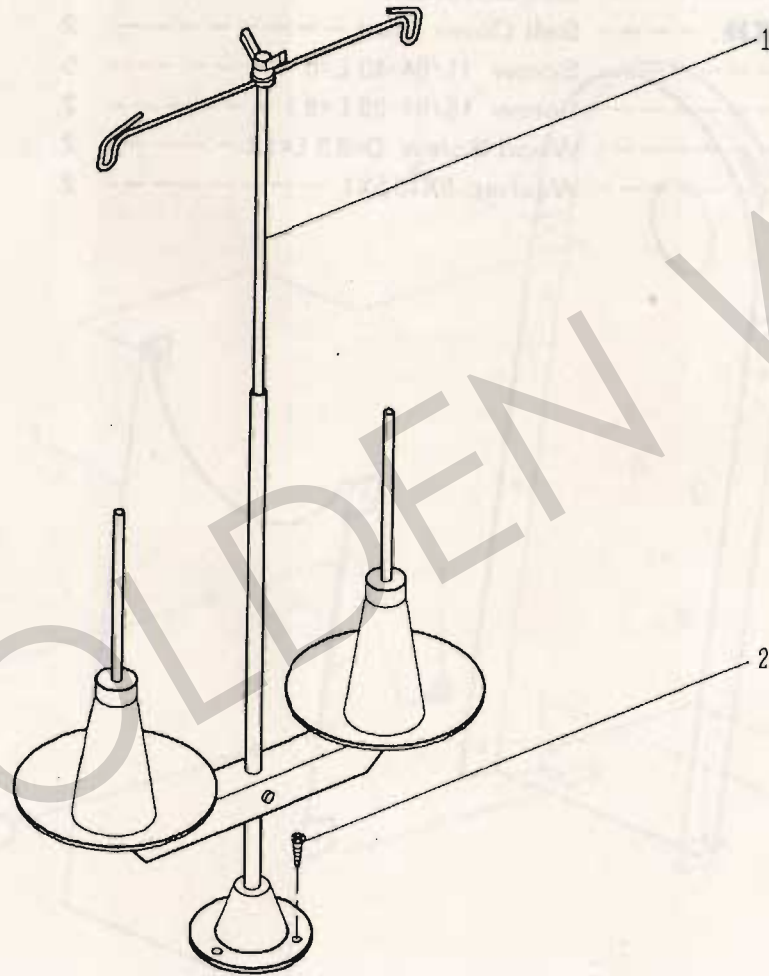
J. 皮帶套關係 BELT COVER COMPONENTS

REF.No	NOTE	零件號碼 Part No.	零件名稱	Name of Part	件數 QTY	備註 Remarks
1		4710335100	皮帶蓋 A	Belt Cover A	1	
2		4710335400	方向指示片	Direction Level	1	
3		4710335200	皮帶蓋 B	Belt Cover B	1	
4		4710335300	皮帶蓋固定螺絲	Belt Cover Stud	2	
5		ZSB11008	螺絲	Screw 11/64-40 L=5	5	
6		ZSB15001	螺絲	Screw 15/64-28 L=6.5	2	
7		ZMT05003	木螺絲	Wood Screw D=8.3 L=18	2	
8		WA059005	墊圓	Washer 5X10.5X1	2	

GOLDEN WHEEL



K. 線架關係 THREAD STAND COMPONENTS



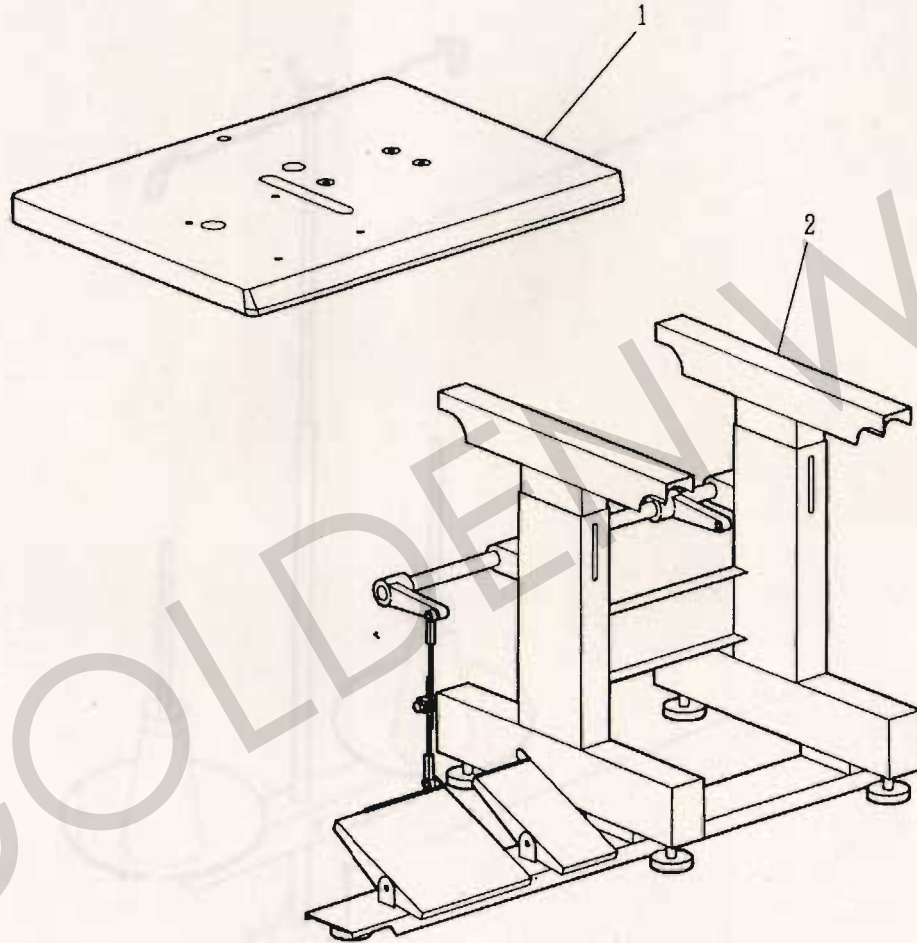
K. 線架関係 THREAD STAND COMPONENTS

REF.No	NOTE	零件號碼 Part No.	零件名稱	Name of Part	件數 Q'TY	備註 Remarks
1		A7050-0A	線架	Shread Stand	1	
2		ZMT05001	木螺絲	Wood Screw L=18	3	



L. 針車板關係

TABLE COMPONENTS

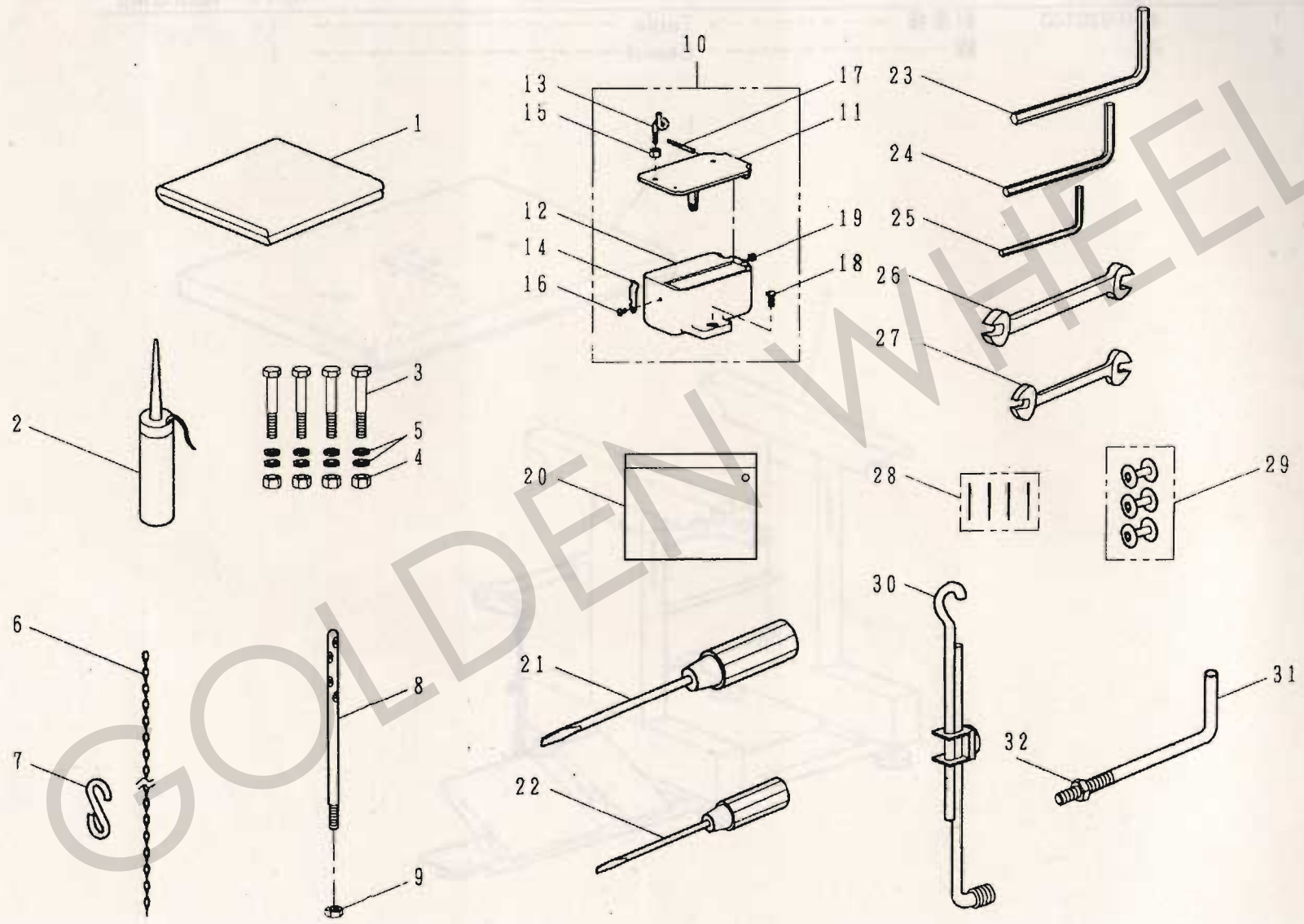


L. 針車板關係 TABLE COMPONENTS

REF.No	NOTE	零件號碼 Part No.	零件名稱	Name of Part	件數 Q'TY	備註 Remarks
1		4710820100	針車板	Table	1	
2		0	脚	Stand	1	



M. 附件 ACCESSORIES PARTS COMPONENTS



M. 附件 ACCESSORIES PARTS COMPONENTS

REF.No	NOTE	零件號碼 Part No.	零件名稱	Name of Part	件數 Q'TY	備註 Remarks
1		A7001-CA	車頭蓋	Cover	1	
2		A7012-1A	油壺	Oiler Asm.	1	
3		ZMD10002	螺絲	Screw M10 L=65	4	
4		ZML10004	螺帽	Nut M10	4	
5		WA110003	平墊圈	Washer 11X21X2	8	
6		4710341400	鎖	Chain	1	
7		4710340800	S型銷	S-Plug	1	
8		4710113400	線柱	Needle Thread Guide Pin	1	
9		ZSL12003	螺帽	Nut 3/16-32	1	
10		4710911005	油壺 組	Oil Pot Asm.	1	
11		4710911100	油壺蓋	Oil Pot Cover	(1)	
12		4710911000	油壺	Oil Pot	(1)	
13		4710911200	線案内	Frame Thread Guide	(1)	
14		4710911300	彈簧板	Cover Stopper	(1)	
15		ZSL06001	螺帽	Nut 3/32-56	(1)	
16		ZSB09047	螺絲	Screw 9/64-40 L=7	(1)	
17		4710911400	銷	Pin	(1)	
18		ZSB15005	螺絲	Screw 15/64-28 L=12	(1)	
19		ZSA09005	螺絲	Screw 9/64-40 L=3.5	(1)	
20		A7000-0A	工具袋	Accessory Box	1	
21		A7010-2A	螺絲起子(大)	Screw Driver, Large	1	
22		A7010-0A	螺絲起子(小)	Screw Driver, Small	1	
23		EH7141-5A	六角型螺絲起子5mm	Hexagonal Wrench Key(5mm)	1	
24		EH7141-6A	六角型螺絲起子4mm	Hexagonal Wrench Key(4mm)	1	
25		EH7141-4A	六角型螺絲起子3mm	Hexagonal Wrench Key(3mm)	1	
26		LG7200-0A	開口板手(11×14)	Wrench (11X14)	1	
27		LG7201-0A	開口板手(9×10)	Wrench (9X10)	1	
28		IN794#230	針	Needle (794 Nm=230-4)	1	
29		4710183200	梭仔	Bobbin	3	
30	#06	0	連結桿組	Motor Connecting Rod Asm.	(1)	
31	#03	0	檢出器定位銷	Supporting Arm	(1)	
32	#03	ZSL15004	螺帽	Nut 15/64-28	(1)	

Note (注記) #03. Optional part
#06. H & M only

オプション部品
H & M 出荷時

N. 零件號碼與頁數對照表

NUMERICAL PARTS—LIST (1/4)

零件號碼 Part No.	頁數 PAGE	零件號碼 Part No.	頁數 PAGE	零件號碼 Part No.	頁數 PAGE	零件號碼 Part No.	頁數 PAGE
4410111005	3-1	4410273000	9-10	4710143000	11-24	4710152000	17-22
4410111200	3-4	4710111005	3-2	4710143100	13-1	4710152500	17-16
4410111300	3-6	4710111100	3-3	4710143200	13-2	4710160100	19-1
4410111400	3-16	4710111200	3-5	4710143300	13-3	4710160200	19-2
4410121000	5-6	4710111300	3-7	4710143400	13-4	4710160300	19-3
4410140100	9-1	4710111400	3-17	4710143500	13-5	4710160404	19-4
4410140200	9-5	4710111600	3-8	4710143600	13-6	4710160600	19-5
4410140900	9-3	4710113400	41-8	4710143700	13-7	4710160700	19-6
4410141900	7-6	4710120300	5-3	4710143800	13-8	4710160800	19-8
4410142000	7-9	4710120400	5-4	4710143900	11-25	4710160900	21-1
4410142100	7-1	4710121000	5-7	4710144100	13-12	4710161000	21-2
4410142300	7-4	4710121100	5-8	4710144200	13-16	4710161100	21-3
4410142400	7-5	4710121300	5-9	4710144401	15-1	4710161200	21-4
4410142900	9-26	4710122000	5-10	4710144500	15-2	4710161300	21-5
4410143100	7-7	4710122100	5-11	4710144600	15-3	4710161400	19-10
4410143300	9-24	4710122304	5-12	4710144700	15-4	4710161600	21-6
4410143600	9-23	4710122500	5-13	4710144800	15-5	4710161700	19-11
4410143700	9-6	4710140100	11-1	4710144900	15-6	4710161800	21-7
4410143800	17-12	4710140400	11-2	4710145000	15-7	4710161900	21-8
4410143805	17-11	4710140500	11-27	4710145100	15-8	4710162000	21-9
4410145600	7-2	4710140500	11-3	4710150100	17-1	4710162100	19-12
4410150100	9-22	4710140700	11-4	4710150200	17-2	4710162200	21-10
4410150400	17-4	4710140900	11-5	4710150300	17-3	4710162300	21-11
4410150500	17-6	4710141200	11-7	4710150400	17-5	4710180100	23-4
4410151000	9-25	4710141300	11-8	4710150500	17-7	4710180300	23-5
4410151100	9-30	4710142000	11-14	4710150600	17-8	4710180500	23-6
4410152500	17-13	4710142101	11-15	4710150700	17-9	4710181300	23-16
4410160800	19-7	4710142201	11-16	4710150800	17-10	4710181400	23-8
4410161400	19-9	4710142301	11-17	4710151000	17-15	4710181800	25-1
4410181600	23-7	4710142401	11-18	4710151005	17-14	4710181900	25-2
4410270100	9-2	4710142500	11-19	4710151500	17-17	4710182000	25-3
4410270200	9-9	4710142600	11-20	4710151600	17-18	4710182100	25-11
4410270400	9-11	4710142700	11-21	4710151700	17-19	4710182200	25-4
4410272200	9-8	4710142800	11-22	4710151800	17-20	4710182300	25-5
4410272300	9-7	4710142900	11-23	4710151900	17-21	4710182400	25-6

N. 零件號碼與頁數對照表

NUMERICAL PARTS—LIST (2/4)

零件號碼	頁數	零件號碼	頁數	零件號碼	頁數	零件號碼	頁數
Part No.	PAGE	Part No.	PAGE	Part No.	PAGE	Part No.	PAGE
4710182500	23-1	4710311000	27-10	4710340400	33-4	LG1274-0A	11-34
4710182600	23-2	4710311100	27-11	4710340500	33-5	LG1275-0A	25-17
4710182700	23-3	4710311200	27-12	4710340600	33-6	LG4014-0A	19-28
4710182800	25-7	4710311400	27-14	4710340700	33-7	LG4043-0A	11-28
4710182900	25-8	4710311605	27-15	4710340800	33-8	LG4043-0A	7-10
4710183000	25-9	4710312000	27-16	4710340800	41-7	LG4044-0A	19-27
4710183100	25-10	4710313000	31-2	4710341200	33-13	LG4044-0A	23-30
4710183200	23-9	4710313005	31-1	4710341400	41-6	LG7200-0A	41-26
4710183200	41-29	4710313100	31-3	4710820100	39-1	LG7201-0A	41-27
4710183600	23-10	4710320100	29-1	4710911000	41-12	RE000040	5-31
4710183700	23-11	4710320300	29-25	4710911005	41-10	RE000080	11-40
4710183800	23-12	4710320400	29-27	4710911100	41-11	RE000080	13-18
4710183900	23-13	4710320500	29-29	4710911200	41-13	RE000080	13-19
4710184000	23-14	4710320800	29-4	4710911300	41-14	RE000080	13-22
4710184200	23-20	4710320805	29-3	4710911400	41-17	RE000080	15-17
4710184210	23-17	4710320900	29-5	4710113300	27-25	RE000080	19-19
4710184220	23-18	4710321000	29-6	4710120101	5-1	RE000080	19-22
4710184230	23-19	4710321100	29-7	4710120201	5-2	RE000080	7-19
4710184240	23-21	4710321200	29-8	4710122601	5-14	RE000080	7-20
4710184250	23-22	4710321300	29-12	4710142201	7-3	RE000080	9-29
4710184260	23-23	4710321400	29-13	A1025-0A	27-2	S1013-0A	3-10
4710190100	5-25	4710321500	29-16	A1025-0A	31-5	WA059005	35-8
4710190200	5-26	4710321600	29-17	A7000-0A	41-20	WA100009	17-31
4710190220	5-27	4710321800	29-18	A7001-0A	41-1	WA110003	41-5
4710190230	5-28	4710321900	29-19	A7010-0A	41-22	WC049001	3-14
4710190300	5-29	4710322000	29-14	A7010-2A	41-21	WH208005	15-10
4710191301	5-5	4710322200	31-8	A7012-1A	41-2	XA200100	9-21
4710310100	27-1	4710322300	31-9	A7050-0A	37-1	XA200160	5-15
4710310100	31-4	4710335100	35-1	E1288-0A	13-17	XA300085	25-16
4710310400	27-4	4710335200	35-3	EH7141-4A	41-25	XB123001	27-13
4710310500	27-5	4710335300	35-4	EH7141-5A	41-23	YB040016	23-27
4710310600	27-6	4710335400	35-2	EH7141-6A	41-24	YB040045	5-18
4710310700	27-7	4710340100	33-1	IN794#230	11-6	YD025014	11-37
4710310800	27-8	4710340200	33-2	IN794#230	41-28	YD030020	17-32
4710310900	27-9	4710340300	33-3	IN794#230	9-4	YD050018	3-9

N. 零件號碼與頁數對照表

NUMERICAL PARTS—LIST (3/4)

零件號碼	頁數	零件號碼	頁數	零件號碼	頁數	零件號碼	頁數
Part No.	PAGE	Part No.	PAGE	Part No.	PAGE	Part No.	PAGE
ZMD10002	41-3	ZSA16010	7-11	ZSB12015	21-15	ZSG15046	33-12
ZMH06005	9-12	ZSA16025	15-12	ZSB12016	17-30	ZSG16024	19-16
ZMH06005	9-14	ZSA16025	5-24	ZSB12036	21-16	ZSG16025	33-16
ZMH06005	9-17	ZSA16029	19-23	ZSB12036	25-20	ZSG20012	5-30
ZMH06010	9-13	ZSA16029	23-31	ZSB12045	3-11	ZSG22002	15-9
ZMJ06002	11-33	ZSA16039	11-10	ZSB15001	33-15	ZSH16001	11-32
ZMJ06002	15-13	ZSA16039	17-24	ZSB15001	33-9	ZSH16001	17-26
ZMJ06002	9-18	ZSB06008	29-9	ZSB15001	35-6	ZSH16001	5-17
ZMJ06004	19-21	ZSB08001	31-11	ZSB15004	31-13	ZSH16002	11-31
ZMJ08003	23-28	ZSB08008	29-28	ZSB15004	9-20	ZSH16005	17-23
ZMJ08003	25-13	ZSB09014	27-21	ZSB15005	13-21	ZSH16005	7-14
ZML10004	41-4	ZSB09047	27-22	ZSB15005	13-23	ZSH16005	9-16
ZMT05001	37-2	ZSB09047	27-24	ZSB15005	41-18	ZSJ15001	25-21
ZMT05003	35-7	ZSB09047	3-13	ZSB15014	3-12	ZSJ16001	17-29
ZSA08007	29-10	ZSB09047	31-12	ZSB15015	7-15	ZSK11037	33-14
ZSA09005	41-19	ZSB09047	41-16	ZSB15019	21-17	ZSK18018	21-12
ZSA11003	29-24	ZSB09061	17-27	ZSB15032	11-11	ZSK18019	13-10
ZSA15010	23-25	ZSB11008	35-5	ZSC09005	27-23	ZSK18019	13-11
ZSA15010	23-26	ZSB11011	27-20	ZSC11002	25-14	ZSK18019	13-20
ZSA15010	25-12	ZSB11011	29-2	ZSC11007	5-22	ZSK18019	15-11
ZSA15010	5-16	ZSB11015	31-10	ZSC18001	5-20	ZSK18019	7-8
ZSA15013	11-9	ZSB11018	3-15	ZSD11010	25-18	ZSK18019	9-28
ZSA15028	11-30	ZSB11022	11-12	ZSD20003	5-23	ZSK18020	21-13
ZSA15028	11-35	ZSB11022	9-15	ZSD20009	7-17	ZSK20006	13-9
ZSA15028	11-36	ZSB11026	13-24	ZSD20011	15-14	ZSK20007	19-13
ZSA15028	15-16	ZSB11035	19-24	ZSD20011	7-16	ZSK20009	11-26
ZSA15028	19-25	ZSB11041	19-18	ZSF18001	13-14	ZSK20009	19-14
ZSA15028	25-15	ZSB11041	9-27	ZSG06004	23-15	ZSK20009	19-15
ZSA15028	29-30	ZSB11042	9-31	ZSG11057	29-21	ZSK20009	7-18
ZSA15028	5-21	ZSB11057	11-38	ZSG11058	13-13	ZSL06001	41-15
ZSA15028	7-12	ZSB11071	29-26	ZSG11059	29-15	ZSL08001	29-11
ZSA15028	7-13	ZSB11076	11-13	ZSG12046	27-18	ZSL09001	17-28
ZSA15037	19-20	ZSB11076	9-19	ZSG12047	23-24	ZSL11002	25-19
ZSA15037	19-26	ZSB11083	29-20	ZSG15045	33-10	ZSL11004	11-39
ZSA16010	11-29	ZSB12002	17-25	ZSG15045	33-11	ZSL11007	29-22

N. 零件號碼與頁數對照表

NUMERICAL PARTS-LIST (4/4)

零件號碼	頁數	零件號碼	頁數	零件號碼	頁數	零件號碼	頁數
Part No.	PAGE	Part No.	PAGE	Part No.	PAGE	Part No.	PAGE
ZSL11007	29-23						
ZSL12003	41-9						
ZSL15002	27-19						
ZSL15004	41-32						
ZSL16004	19-17						
ZSL18001	21-14						
ZSL18001	5-19						
ZSL18001	5-32						
ZSL18003	13-15						
ZSL18003	23-29						
ZSL18003	27-17						
ZSL18003	31-7						
ZSL22001	15-15						
ZSN16004	27-3						
ZSN16004	31-6						

GOLDEN WHEEL